

EASY ASSEMBLY AND OPERATION INSTRUCTIONS

MR4124012 Rocking Santa



Please follow the step by step guide and enjoy your Rocking Santa!

CARE AND STORAGE INSTRUCTIONS

For best performance operate your item indoors. When not in use, store this product in its original packing. Keep away from heat and moisture.

WARNING

This item is not a toy and should be used for decoration only. This item contains small parts that can be a choking hazard. Keep all plastic and wire parts away from children. This product is intended for people ages 14 and up.

Please read all instructions carefully before assembling. Save this instruction sheet for future reference.

PARTS LIST

- A. Base/Frame x 1
 - B. Pants x 1
 - C. Right Leg x 1
 - D. Left Leg x 1
 - E. Shoulder Frame x 1
 - F. Stomach Ring x 1
 - G. Jacket x 1
 - H. Right Arm x 1
 - I. Left Arm x 1
 - J. Belt x 1
 - K. Head x 1
 - L. Hat x 1
 - M. Step Pad x 1
 - N. Universal Adapter (Included) x 1
- Input: 100 - 240VAC 50/60Hz
Output: 5.9V 3.0A



BEFORE ASSEMBLING, REMOVE ALL THE ABOVE PARTS FROM BOX. IF ANY PART IS MISSING, PLEASE CONTACT CUSTOMER SERVICE AT SUPPORT@MORRISCOSTUMES.COM, OR BY PHONE 704-332-3304. IN YOUR EMAIL INQUIRY, PLEASE INCLUDE: YOUR ORDER NUMBER, WHO YOU BOUGHT IT FROM, AND WHAT SPECIFICALLY IS WRONG. THANK YOU.



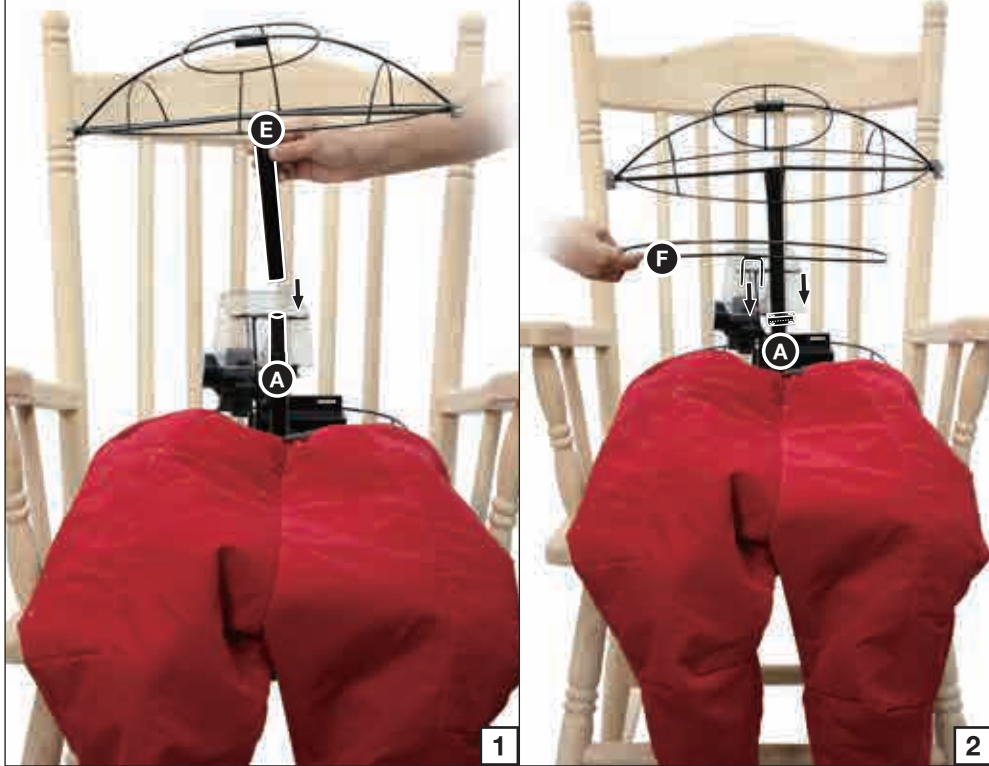
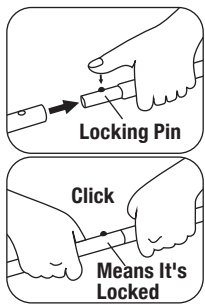
STEP 1

Note The longer end of the (A) Base/Frame goes towards the front. First place the (A) Base/Frame in any chair as shown in Figure 1.
NOTE: Using a rocking chair will give the best effect. (Chair is not included)
NOTE: The speaker on the Function Control Box located on the (E) Torso Frame should be facing front.
Now, plug the Adapter into the input receiving jack marked "DC 5.9V" on the Function Control Box and route the Power Adapter down and out the bottom of the item.



STEP 2

Put the (B) Pants around the (A) Base/Frame as shown in Figure 1.
Slide the (C) Right Leg up through the right pants leg and slide the forked hook into the right slot housing on the (A) Base/Frame as shown in Figures 2 & 3.
Slide the (D) Left Leg up through the left pants leg and slide the forked hook into the left slot housing on the (A) Base/Frame as shown in Figures 4 & 5.



STEP 3

Attach the (E) Shoulder Frame support pole to the (A) Base/Frame and secure by aligning the quick connect push buttons into the pre-drilled holes as shown in Figure 1.
Attach the (F) Stomach Ring to the slot located on the (A) Base/Frame by sliding the forked-hook into the slot as shown in Figure 2.



STEP 4

Lower the (G) Jacket over the (E) Shoulder Frame as shown in Figure 1.
NOTE: Jacket has an inner pocket so the consumer can add their own stuffing to make Santa jollier.
Slide the (H) Right Arm up through the right sleeve and slide the forked-hook into the right "shoulder" slot on the (E) Shoulder Frame as shown in Figure 2.
Slide the (I) Left Arm up through the left sleeve and slide the forked-hook into the left "shoulder" slot on the (I) Shoulder Frame as shown in Figure 3.
Place the (J) Belt around his waist and secure with the hook & loop closures as shown in Figure 4.

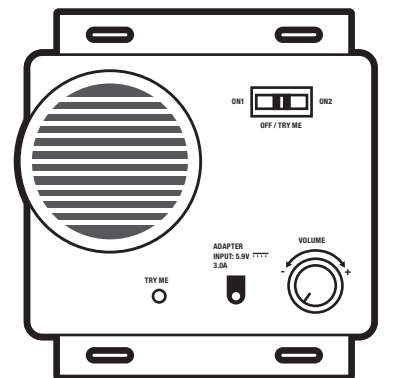


STEP 5

Set the (K) Head onto the (E) Shoulder Frame by sliding the forked hook into the slot as shown in Figure 1.
Secure the back of the (G) Jacket with the hook & loop closures as shown in Figure 2.
Place the (L) Hat onto the (K) Head as shown in Figure 3.
Your Rocking Santa is now fully assembled. Plug in and turn on to let the fun begin!

OPERATION INSTRUCTIONS:

1. Plug the Power Adapter into a standard power outlet and adjust the settings on the Function Control Box to your liking.
2. Rocking Santa has 3 operation settings which can be found on the main Function Control Box on the (A) Base/Frame:
 - ON1: Continuous rocking without sounds.
 - OFF/TRY ME: Continuous rocking with sounds pad-activated sounds.
 - ON2: Continuous rocking with sounds.
3. The Function Control Box also includes a Volume Control Knob, which allows you to adjust the volume to be as loud or as quiet as needed. Be sure to test the item before finalizing your display so you can set the volume to your liking.



This device complies with Part 15 of the FCC Rules. Operation is subject to the following two conditions: (1) This device may not cause harmful interference, and (2) this device must accept any interference received, including interference that may cause undesired operation.

CAUTION: Changes or modifications not expressly approved by the party responsible for compliance could void the user's authority to operate the equipment.

NOTE: This equipment has been tested and found to comply with the limits for a Class B digital device, pursuant to Part 15 of the FCC Rules. These limits are designed to provide reasonable protection against harmful interference in a residential installation. This equipment generates, uses, and can radiate radio frequency energy and, if not installed and used in accordance with the instructions, may cause harmful interference to radio communications. However, there is no guarantee that interference will not occur in a particular installation. If this equipment does cause harmful interference to radio or television reception, which can be determined by turning the equipment off and on, the user is encouraged to try to correct the interference by one or more of the following measures: Reorient or relocate the receiving antenna, Increase the separation between the equipment and receiver, Connect the equipment into an outlet on a circuit different from that to which the receiver is connected. Consult the dealer or experienced radio/TV technician for help.