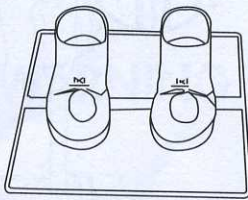


# ANIMATED FIGURE INSTRUCTIONS

Congratulations! You are the proud owner of a Gemmy animated figure. Please read over the directions carefully before using your new figure.

Please keep these instructions for future reference because they contain important information.



**A** X 1



**B** X 1



**C** X 1



**D** X 6



**E** X 1



**F** X 1



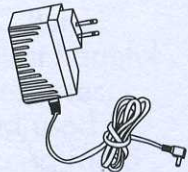
**G** X 4



**H<sup>1</sup>** X 2



**H<sup>2</sup>** X 2



**I** X 1

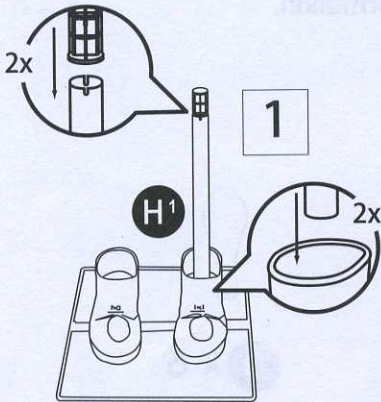
## PACKAGE CONTENTS

A. Base with Boots .....	1 piece
B. Head .....	1 piece
C. Torso with costume, arms and one hand .....	1 piece
D. Balloon .....	6 pieces
E. Balloon stick .....	1 piece
F. Hand .....	1 piece
G. Connector Joints .....	4 pieces
H. Poles .....	4 pieces
I. DC Adapter .....	1 piece

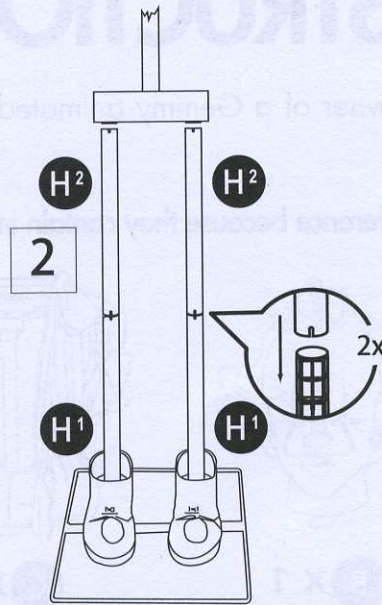
## PREPARATION

Before beginning assembly, remove all parts from carton. Compare parts list and diagram above. If any part is missing or damaged, do not attempt to assemble or use the product. Contact customer service for more information.

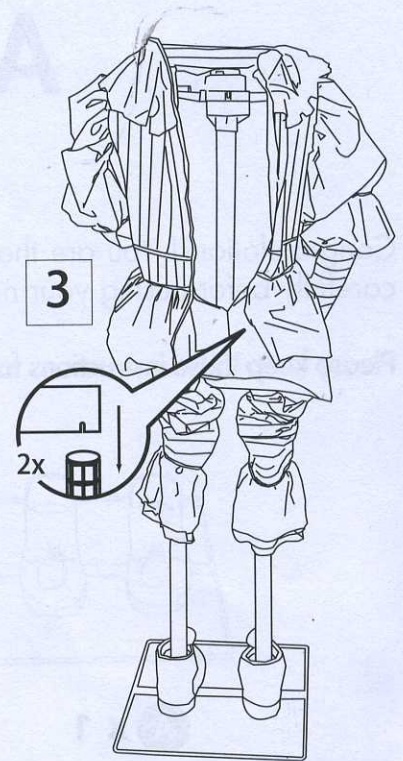
# ASSEMBLY INSTRUCTIONS



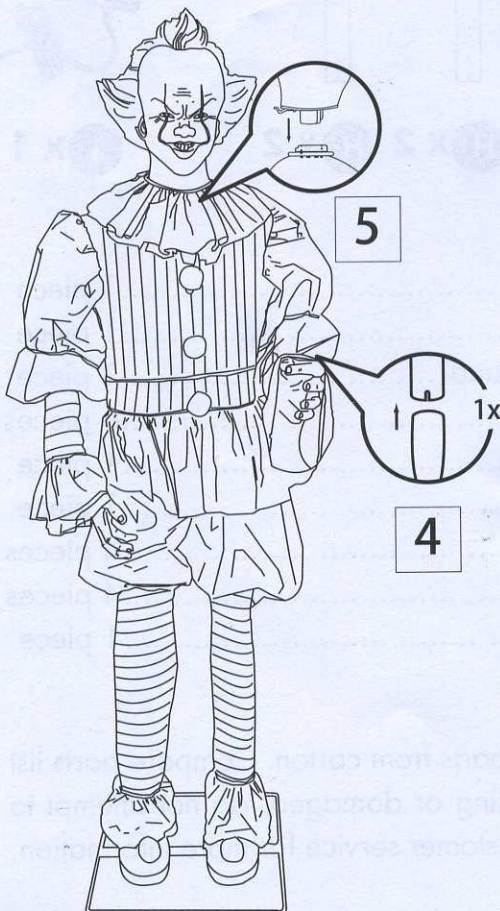
1. Set base with boots on clear, flat and stable surface.



2. Place one pole(H<sup>1</sup>) in the connection point located inside the boot and repeat with the second pole and boot. Attach connectors to the top of each pole and place the additional pole(H<sup>2</sup>) on top.



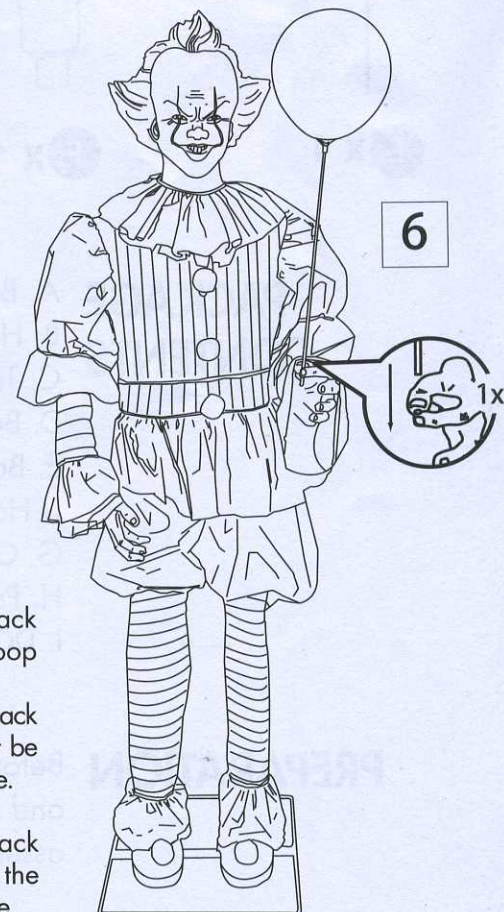
3. Lift the torso with costume and slide the pant legs over each leg pole. Set the torso base on top of the leg poles for a snug fit.



4. Take the left hand and insert it into the left arm.

5. Attach the head on top of the torso.

6. Fill balloon with air (pump not included) and attach it to the balloon stick. Place balloon stick inside finger slot and position height as desired.



7. The Adapter port is located on the back of the figure. Open the hook and loop on the back to expose this port. Adapter: Plug adapter into port on the back of the figure and into outlet. Figure must be plugged in to an outlet in order to operate.

8. Sensor/Off Switch is located on the back of the figure. In "Sensor" position, the motion and sound sensor will operate.

