

EASY ASSEMBLY AND OPERATION INSTRUCTIONS

5127030 Scorched Scarecrow with Fog



This item, when assembled by the following instructions, should take 15 minutes to assemble. Please follow the step by step guide and enjoy your Scorched Scarecrow with Fog!

WARNING

This item is not a toy and should be used for decoration only. This item contains small parts that can be a choking hazard. Keep all plastic and wire parts away from children.

1. Please use the adapter supplied by manufacturer.
2. Please assemble item according to instructions. Connect all wires according to matching color.
3. Children should be supervised by adults. Item should not be grabbed, as it becomes a tipping hazard. Keep all away from the adapter, as it heats up during operation.

CARE AND STORAGE INSTRUCTIONS

For best performance operate your item indoors. When not in use, store this product in its original packing. Keep away from heat and moisture.

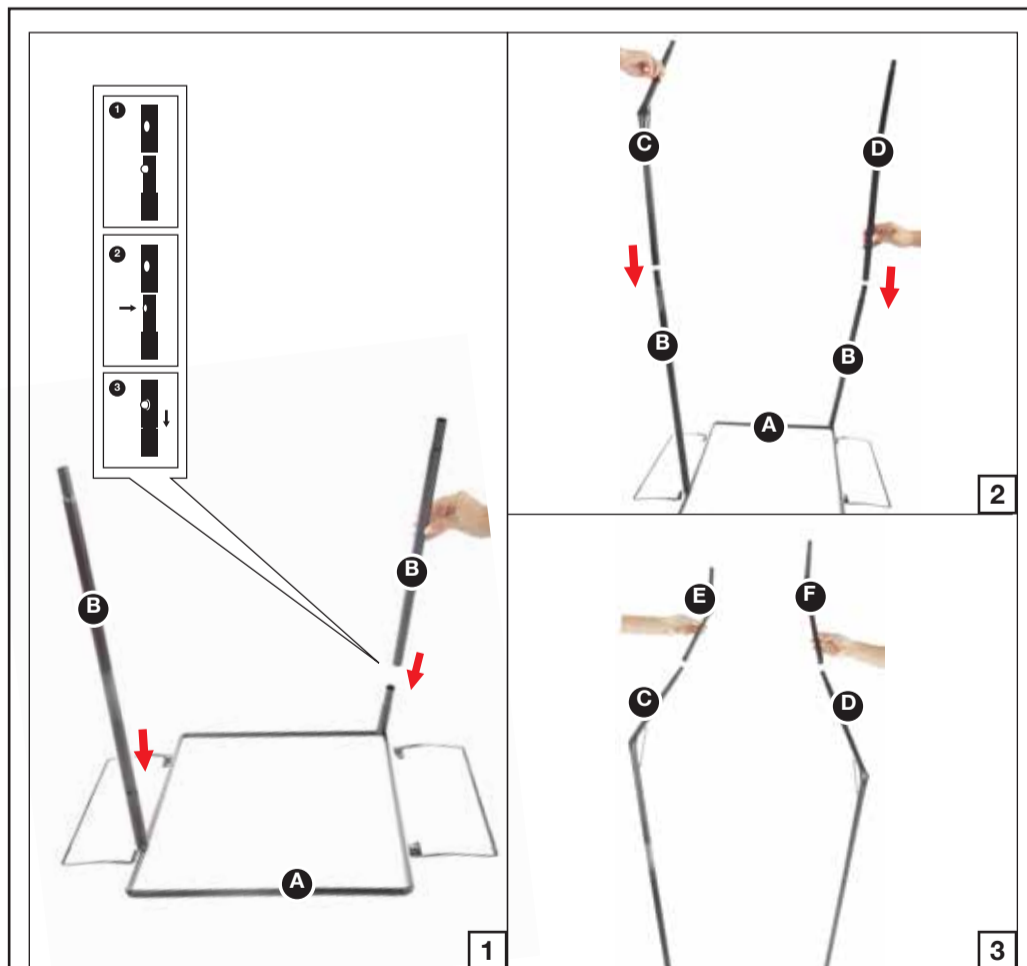
Please read all instructions carefully before assembling. Save this instruction sheet for future reference.

PARTS LIST

- A. Base
- B. Lower Support Poles x 2
- C. Right Knee pole
- D. Left Knee pole
- E. Right Hip pole
- F. Left Hip pole
- G. Long Foam Tubes x 2
- H. Short Foam Tubes x 2
- I. Pants
- J. Torso Frame
- K. Hip Hoop
- L. Shoulder Support
- M. Spine
- N. Coat
- O. Liner
- P. Chest
- Q. Neck Cover
- R. Head
- S. Right Arm
- T. Left Arm
- U. Step Pad
- V. Long Fog Hose
- W. Fog Machine
- X. Fog Hose
- Y. Fog Machine Adapter
- Z. Moisture Trap Tank

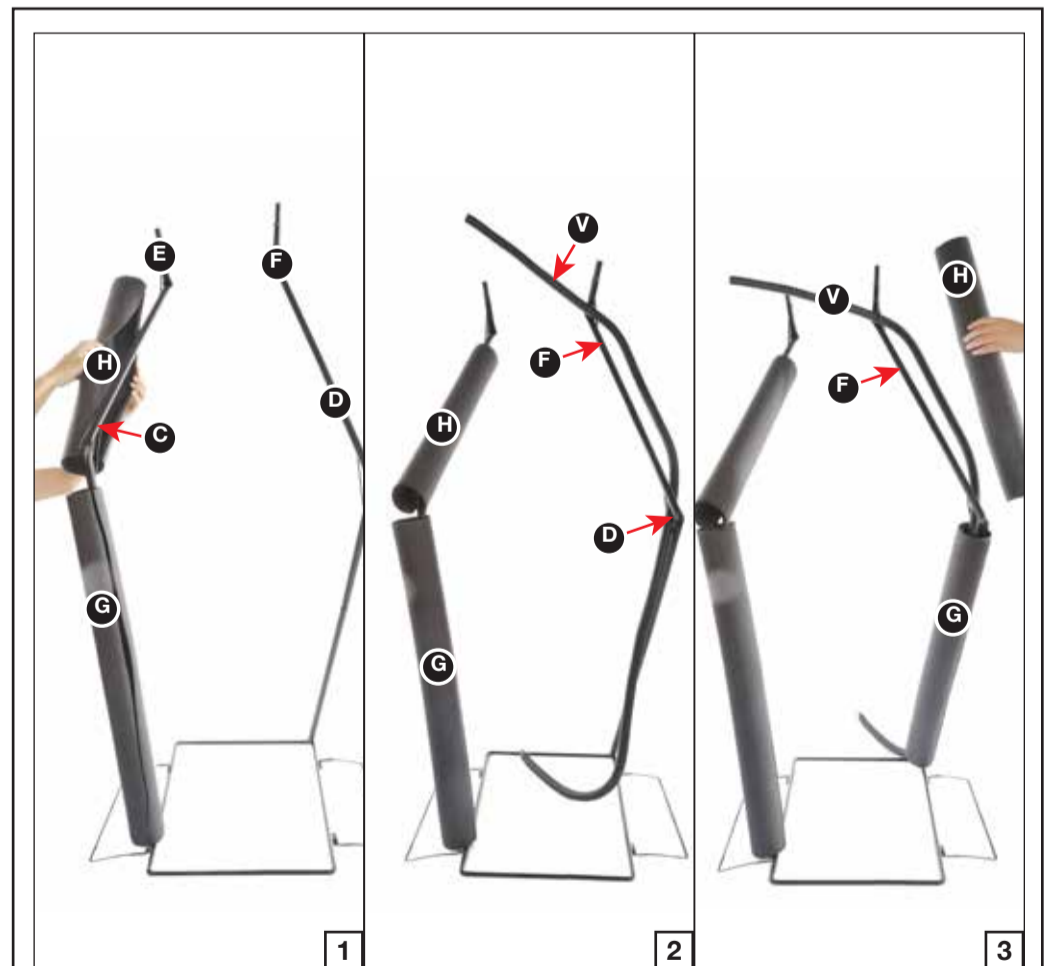
UL Power Adapter *
 * UL Power Adapter Spec
 Input: 100 - 240VAC 50/60Hz
 Output: 5.9V 1.5A

BEFORE ASSEMBLING, REMOVE ALL THE ABOVE PARTS FROM BOX. IF ANY PART IS MISSING, DO NOT ATTEMPT TO ASSEMBLE THE PRODUCT AND CONTACT CUSTOMER SERVICE FROM 8:30AM TO 5:30PM PST AT 1-855-428-3921.



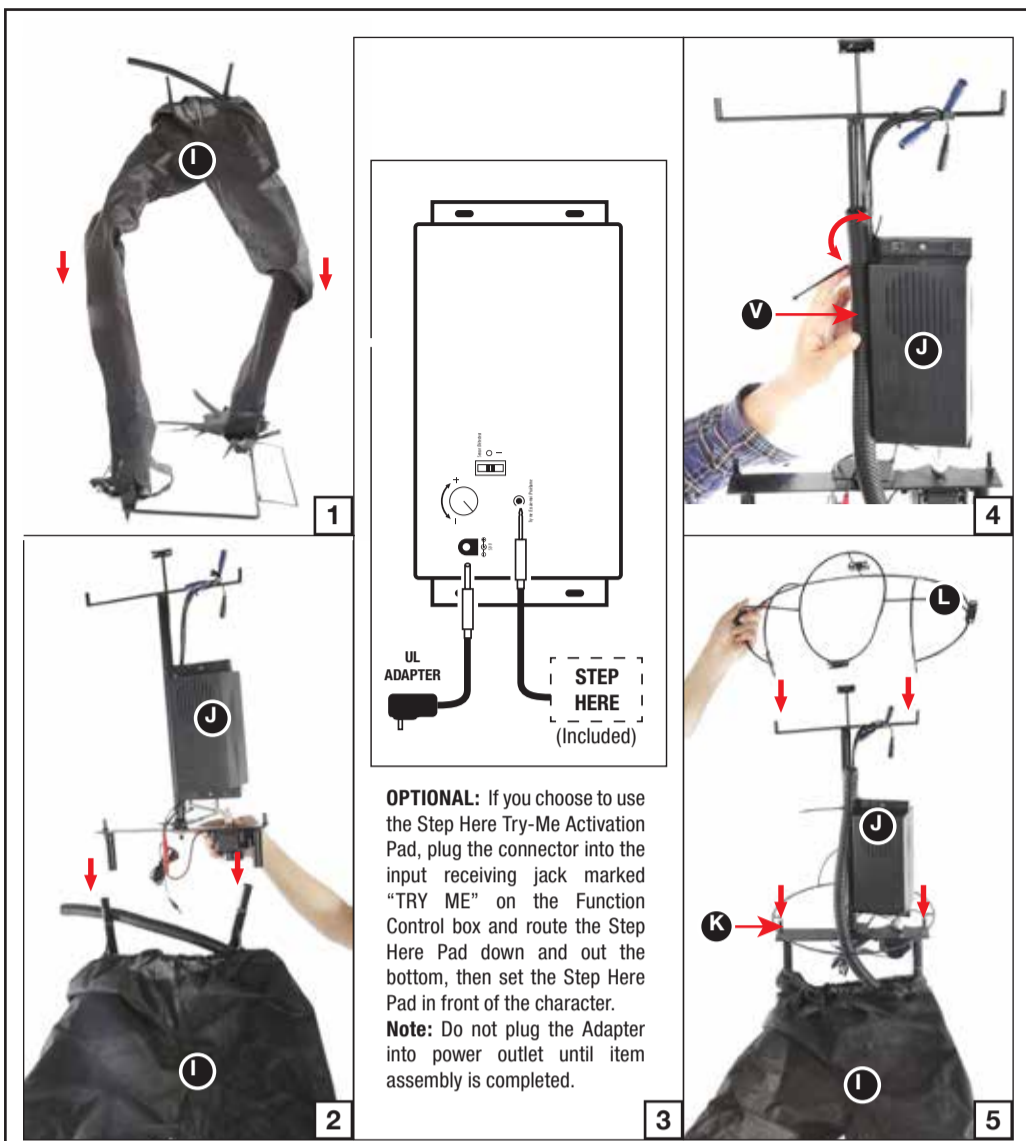
STEP1

Note: The posts located on the (A) Base angle towards the front.
 Attach the (B) Lower Support Poles to the (A) Base as shown and secure by aligning the quick-connect push button into the pre-drilled holes as shown in Figure 1.
 Lower (C) & (D) Knee poles to the (B) Lower Support Poles and secure by aligning the quick-connect push button into the pre-drilled holes as shown in Figure 2.
 Lower (E) & (F) Hip poles to (C) & (D) Knee poles and secure by aligning the quick-connect push button into the pre-drilled holes as shown in Figure 3.



STEP2

Wrap right (B) Lower Support pole with the (G) Long Foam Tube, Wrap the (C) Right Knee Pole & the (E) Right Hip Pole with the (H) Short Foam Tube as shown in Figure 1.
 Slid the (V) Long Fog Hose through the Branches located on the (D) Left knee pole & (F) Left Hip pole as shown in Figure 2.
 Wrap left (B) Lower Support pole with the (G) Long Foam Tube, Wrap the (D) Left Knee Pole & the (F) Left Hip Pole with the (H) Short Foam Tube as shown in Figure 3.

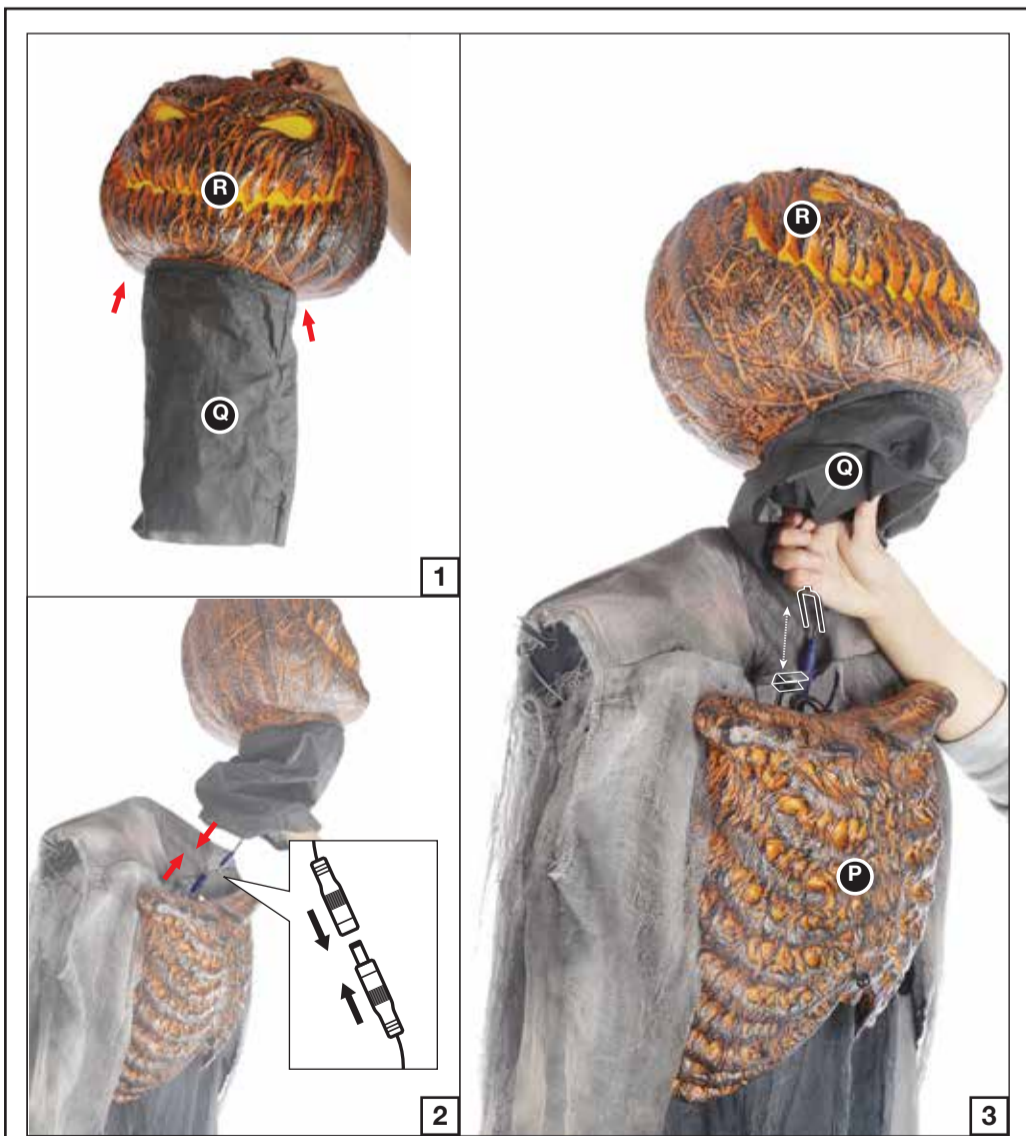


OPTIONAL: If you choose to use the Step Here Try-Me Activation Pad, plug the connector into the input receiving jack marked "TRY ME" on the Function Control box and route the Step Here Pad down and out the bottom, then set the Step Here Pad in front of the character.
Note: Do not plug the Adapter into power outlet until item assembly is completed.

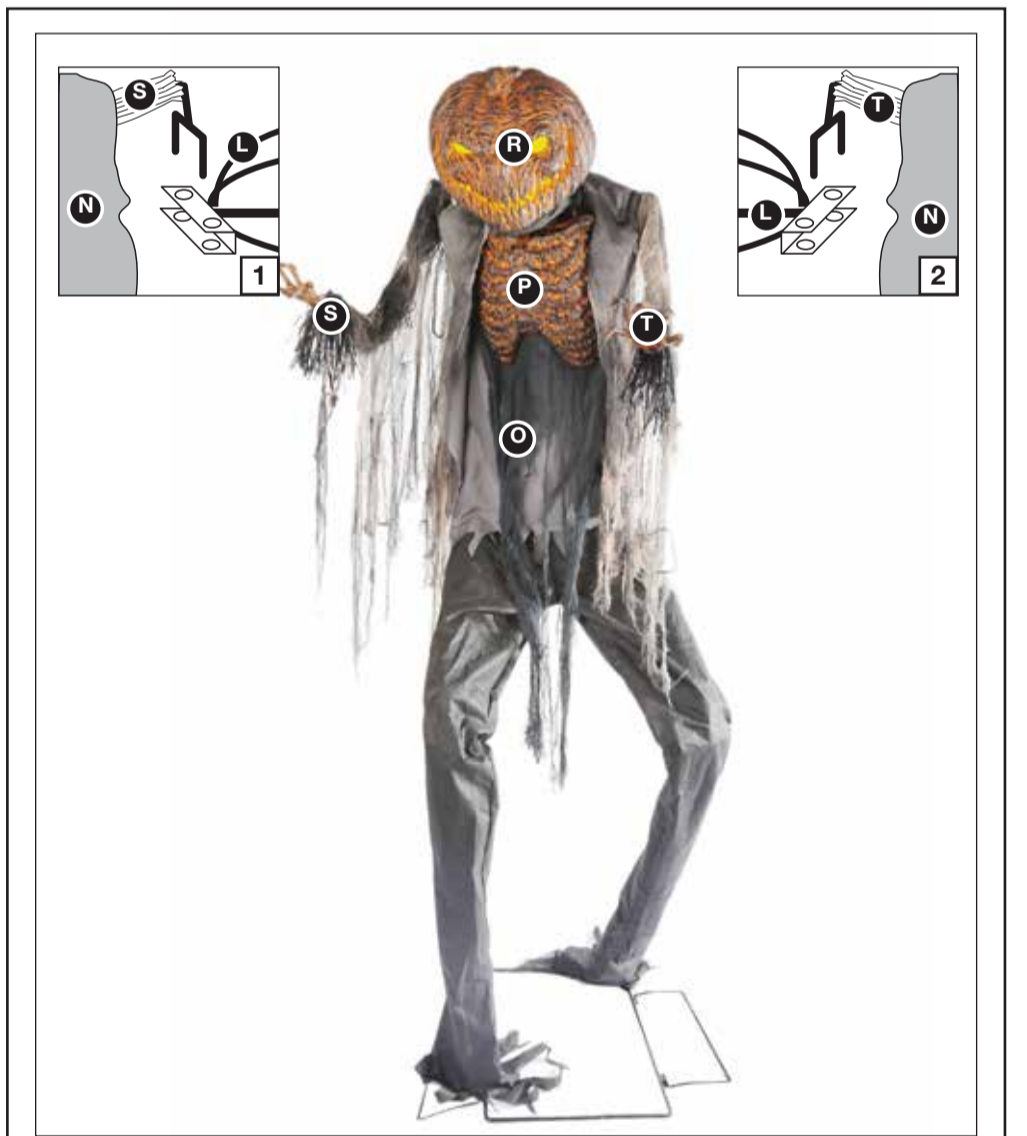
STEP3
 Lower the (I) Pants over the assembled poles as shown in Figure 1. Assemble the (J) Torso Frame onto the (E) & (F) Hip poles and secure by aligning the quick-connect push buttons into the pre-drilled holes as shown in Figure 2. Now, plug the Adapter into the input receiving jack marked "DC 5.9V" on the Function Control Box. Bundle the (V) Long Fog Hose and the (J) Torso Frame together with Plastic ties (included) as shown in Figure 4. Lower the (K) Hip Hoop down over the (J) Torso Frame and attach the (K) Hip Hoop through the slots located on the (J) Torso Frame, attach the (L) Shoulder Support into the slots located on the top of the (J) Torso Frame as shown in Figure 5.



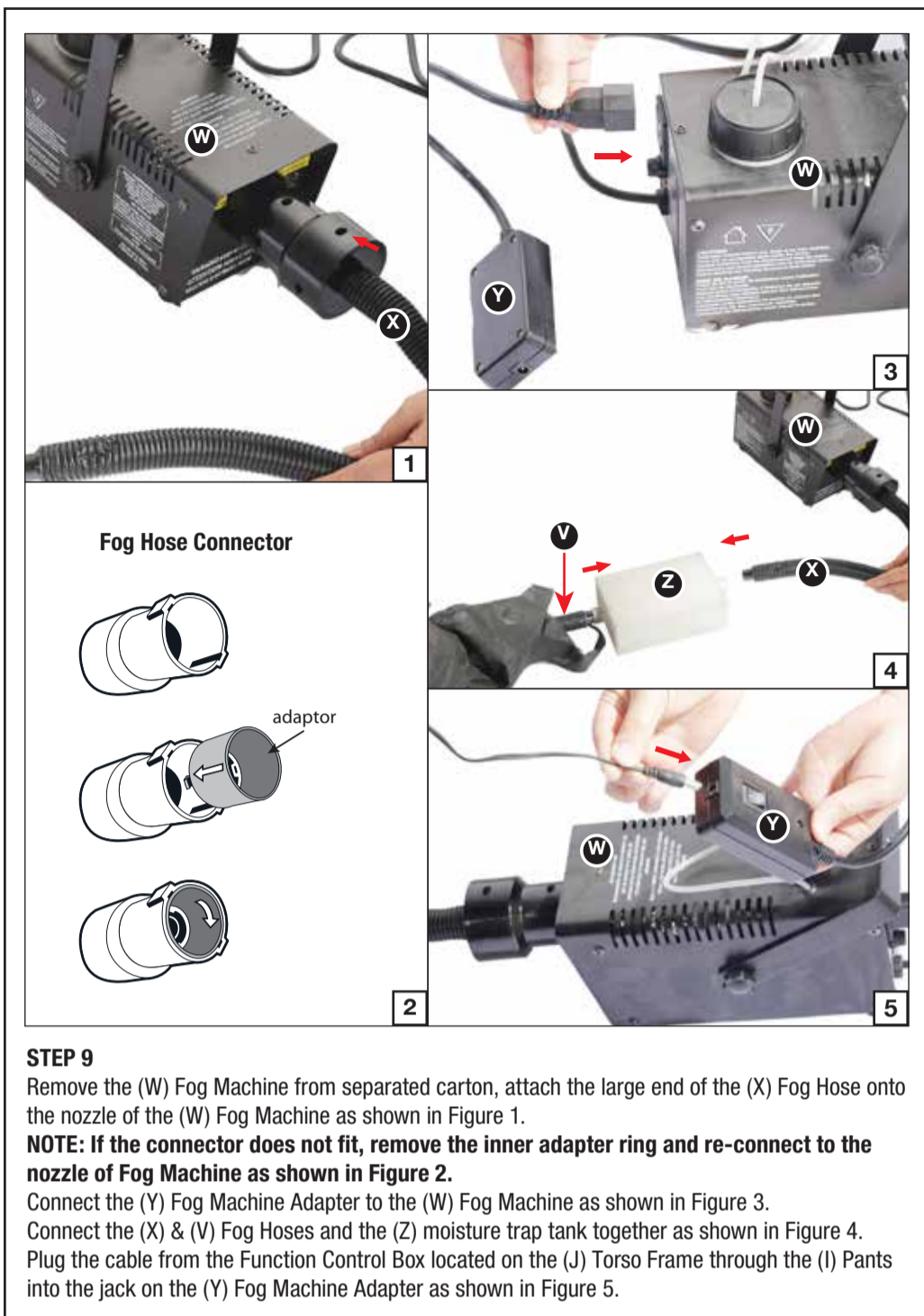
STEP4
 Attach the (M) Spine into the slots located on the back of the (L) Shoulder Support as shown in Figure 1. Lower the (N) Coat over the (L) Shoulder Support and the (M) Spine, pull the (I) Pants up over the (K) Hip Hoop as shown in Figure 2. Secure the (O) Liner to the (N) Coat with the hook & loop closures, wrap the top of the (O) Liner around the horizontal pole located on the (J) Torso Frame as shown in Figure 3. Connect the cables from the (P) Chest to the coordinating cables from the Function Control Box located on the (J) Torso Frame, attach the (P) Chest into the slots located on the front of the (L) Shoulder Support as shown in Figure 4.



STEP5
 Attach the (Q) Neck Cover under the (R) Head as shown in Figure 1. Connect the cable from the (R) Head to the coordinating cable from the Function Control Box located on the (J) Torso Frame as shown in Figure 2. Set the (R) Head onto the (J) Torso Frame by sliding the forked-hook into the "neck" slot housing on the (J) Torso Frame as shown in Figure 3.



STEP6
 Flip over right sleeve gauze, slide the (S) Right Arm's forked-hook into the right "shoulder" slot housing on the (L) Shoulder Support as shown in Figure 1. Flip over left sleeve gauze, slide the (T) Left Arm's forked-hook into the left "shoulder" slot housing on the (L) Shoulder Support as shown in Figure 2.



OPERATION INSTRUCTIONS:

1. Plug the Adapter into a standard power outlet and adjust the settings on the Function Control Box as desired.

2. Settings:

Sensor: This switch mode will activate lights, sound, and animation when the Infra-red (IR) sensor is activated and will operate for 1 audio-cycle with each activation. The Infra-red (IR) sensor has a range of up to 2 m/6.5 ft. and will activate when someone comes within an 80-degree angle from left-to-right, as well as from above and below.

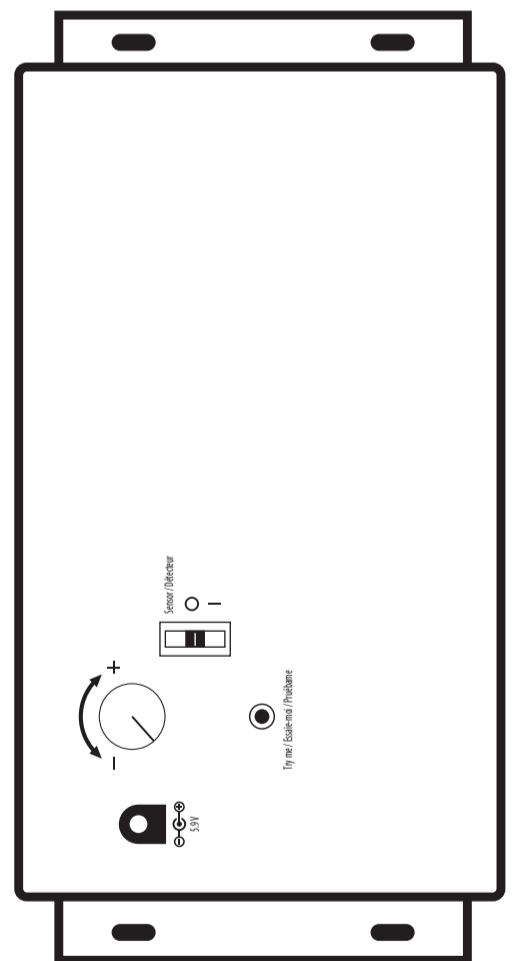
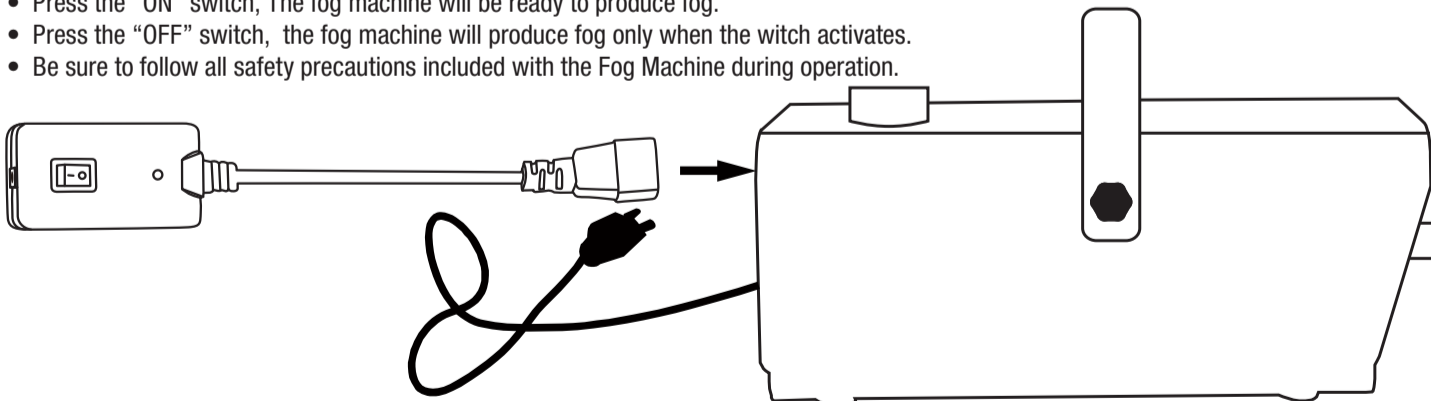
○/OFF/Try Me: This switch mode allows the item to be activated only if triggered by using a Step Here Try Me Activation Pad. The item will operate for one audio cycle with each Try Me activation. Refer to Assembly Instructions Step3 for further details.

I / ON : This switch mode will continuously operate the lights, sound, and animation of the item.

⌚ + : Raise or lower the volume using the volume control turn dial, turn and click all the way down to turn the volume off.

FOG MACHINE ADAPTER INSTRUCTION:

- Use the (Y) Fog Machine Adapter only with SVI 400 Watt Fog Machine (Included).
- Connect the 3-prong plug of the (Y) Fog Machine Adapter into the jack at the back of the Fog Machine.
- Connect the power cord of the Fog Machine into a power outlet.
- Turn the power switch of the Fog Machine to the "ON" position.
- After the Fog Machine warms up (approx. 5 minutes), the light on the (Y) Fog Machine Adapter will turn on.
- Press the "ON" switch, The fog machine will be ready to produce fog.
- Press the "OFF" switch, the fog machine will produce fog only when the witch activates.
- Be sure to follow all safety precautions included with the Fog Machine during operation.



IMPORTANT SAFETY INSTRUCTIONS

Read Fog Machine instructions located in Fog Machine separated carton before operating.

Open the package and check for obvious damage during shipping. If found, discontinue use and contact the distributor.

This device complies with Part 15 of the FCC Rules. Operation is subject to the following two conditions: (1) This device may not cause harmful interference, and (2) this device must accept any interference received, including interference that may cause undesired operation.

CAUTION: Changes or modifications not expressly approved by the party responsible for compliance could void the user's authority to operate the equipment.

NOTE: This equipment has been tested and found to comply with the limits for a Class B digital device, pursuant to Part 15 of the FCC Rules. These limits are designed to provide reasonable protection against harmful interference in a residential installation. This equipment generates, uses and can radiate radio frequency energy and, if not installed and used in accordance with the instructions, may cause harmful interference to radio communications. However, there is no guarantee that interference will not occur in a particular installation. If this equipment does cause harmful interference to radio or television reception, which can be determined by turning the equipment off and on, the user is encouraged to try to correct the interference by one or more of the following measures: Reorient or relocate the receiving antenna, increase the separation between the equipment and receiver, Connect the equipment into an outlet on a circuit different from that to which the receiver is connected. Consult the dealer or experienced radio/TV technician for help.