

EASY ASSEMBLY AND OPERATION INSTRUCTIONS

MR-125058 Servo Crone Witch



Please follow the step by step guide and enjoy your Servo Crone Witch!

Please read all instructions carefully before assembling. Save this instruction sheet for future reference.

CARE AND STORAGE INSTRUCTIONS

For best performance operate your item indoors. When not in use, store this product in its original packing. Keep away from heat and moisture.

⚠ WARNING

This item is not a toy and should be used for decoration only. This item contains small parts that can be a choking hazard. Keep all plastic and wire parts away from children.

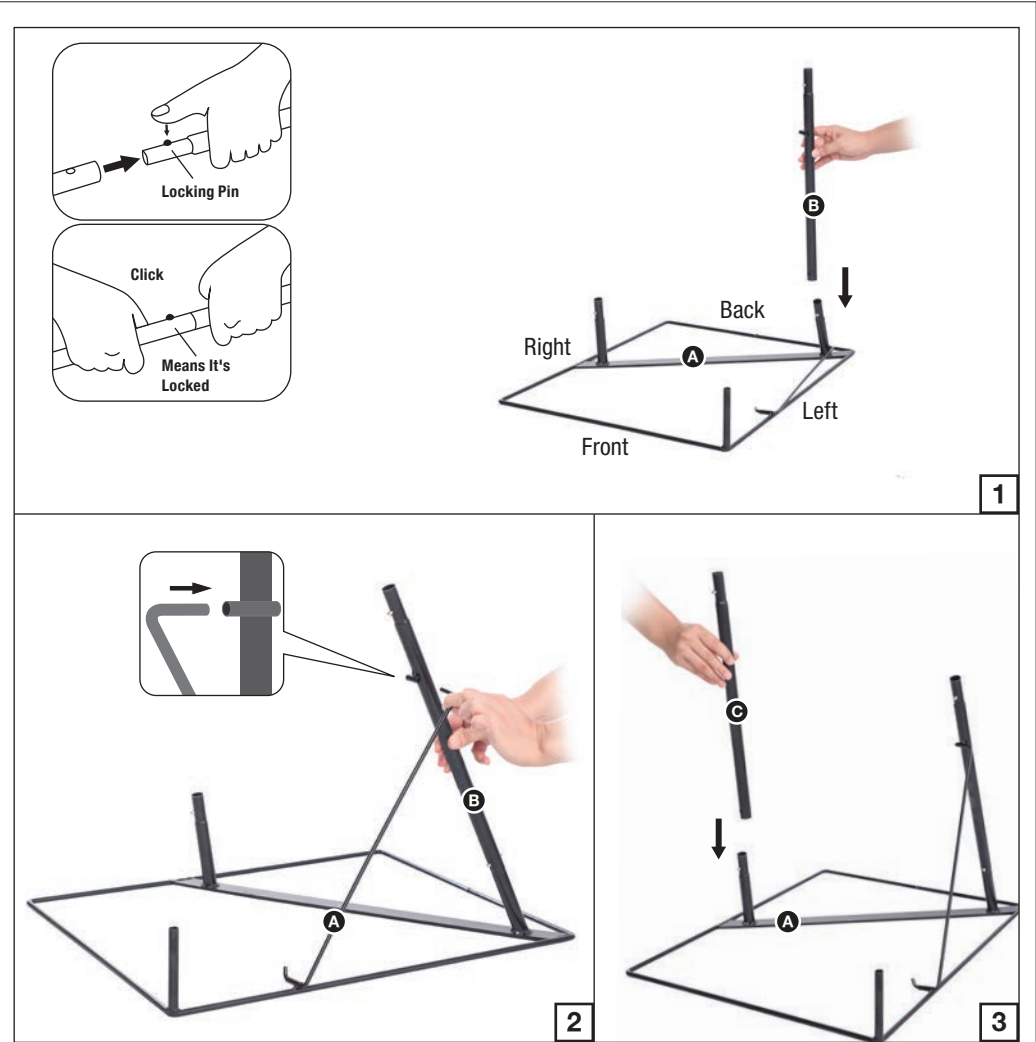
1. Please use the adapter supplied by manufacturer.
2. Please assemble item according to instructions. Connect all wires according to matching color.
3. Children should be supervised by adults. Item should not be grabbed, as it becomes a tipping hazard.
4. Keep all away from the adapter, as it heats up during operation.

PARTS LIST

- A. Base x 1
 - B. Left Pole x 1
 - C. Right Pole x 1
 - D. Knee Poles x 2
 - E. Waist Frame x 1
 - F. Skirt x 1
 - G. Body Frame x 1
 - H. Shirt x 1
 - I. Lower Staff x 1
 - J. Staff and Arm x 1
 - K. Right Arm x 1
 - L. Right Hand x 1
 - M. Head x 1
 - N. Apron x 1
 - O. Gauze x 1
 - P. Bone Necklace x 1
 - Q. Hat x 1
 - R. Step Here Pad x 1
 - S. Universal Adapter (Included) x 1
- Input: 100 - 240VAC 50/60Hz
Output: 5.9V 3.0A



BEFORE ASSEMBLING, REMOVE ALL THE ABOVE PARTS FROM BOX. IF ANY PART IS MISSING, PLEASE CONTACT CUSTOMER SERVICE AT SUPPORT@MORRISCOSTUMES.COM, OR BY PHONE 704-332-3304. IN YOUR EMAIL INQUIRY, PLEASE INCLUDE: YOUR ORDER NUMBER, WHO YOU BOUGHT IT FROM, AND WHAT SPECIFICALLY IS WRONG. THANK YOU.



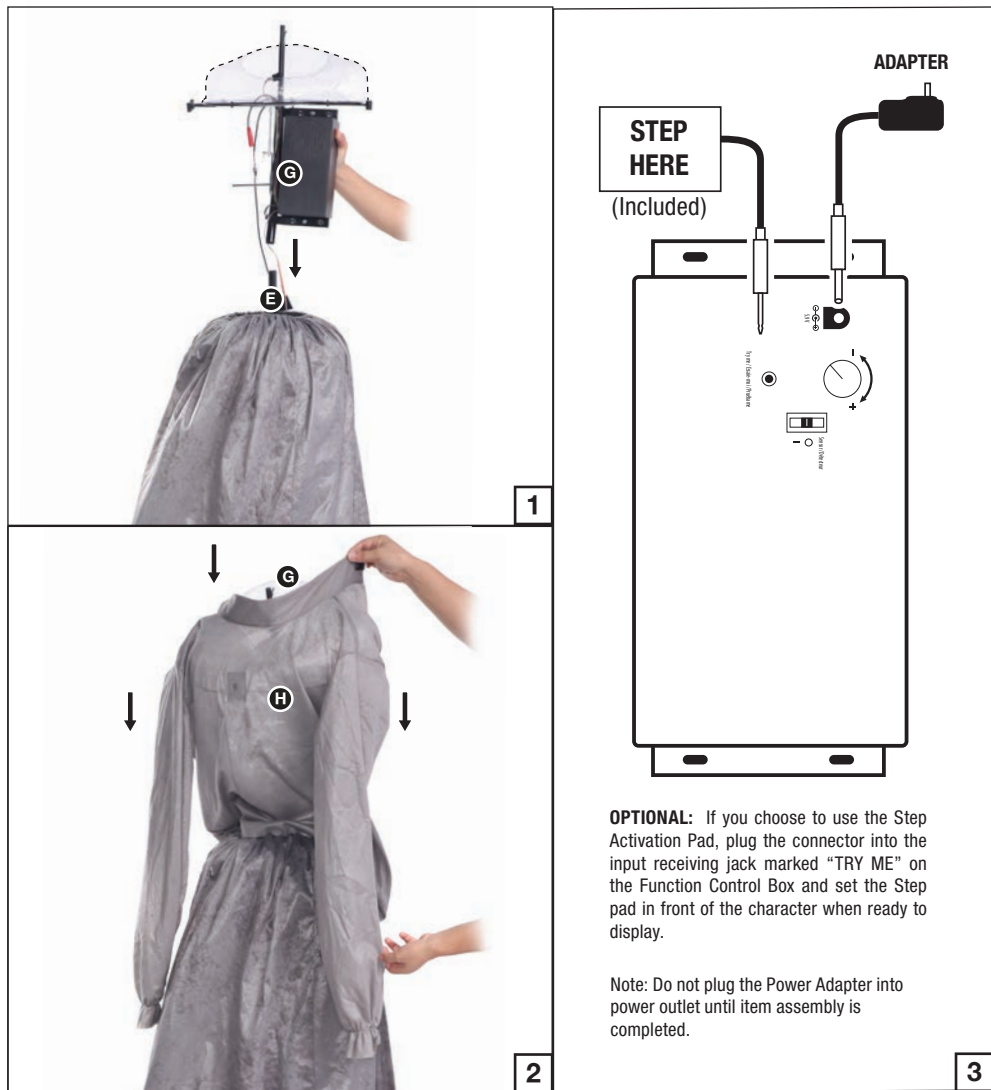
STEP 1

Attach the (B) Left Pole to the left side of the (A) Base using the available quick connect push button and pre-drilled hole as shown in Figure 1.
Then set the strut available from the (A) Base into the housing available on the (B) Left Pole as shown in Figure 2.
Attach the (C) Right Pole to the right side of the (A) Base using the available quick connect push button and pre-drilled hole as shown in Figure 3.



STEP 2

Attach the (D) Knee Poles to the (B, C) Poles using the available quick connect push buttons and pre-drilled holes as shown in Figure 1.
Then attach the (E) Waist Frame to the (D) Knee Poles using the available quick connect push buttons and pre-drilled holes as shown in Figure 2.
Then slip the (F) Skirt over the assembly so that the top of the (F) Skirt rests on top of the (E) Waist Frame as shown in Figure 3.



STEP 3
Attach the (G) Body Frame to the (E) Waist Frame using the available quick connect push button and pre-drilled hole as shown in Figure 1.
Then slip the (H) Shirt over the (G) Body Frame so that the opening of the (H) Shirt is aimed towards the back as shown in Figure 2.
Now, plug the Adapter into the input receiving jack marked "DC 5.9V" on the Function Control Box and route the Power Adapter down and out the bottom of the item.



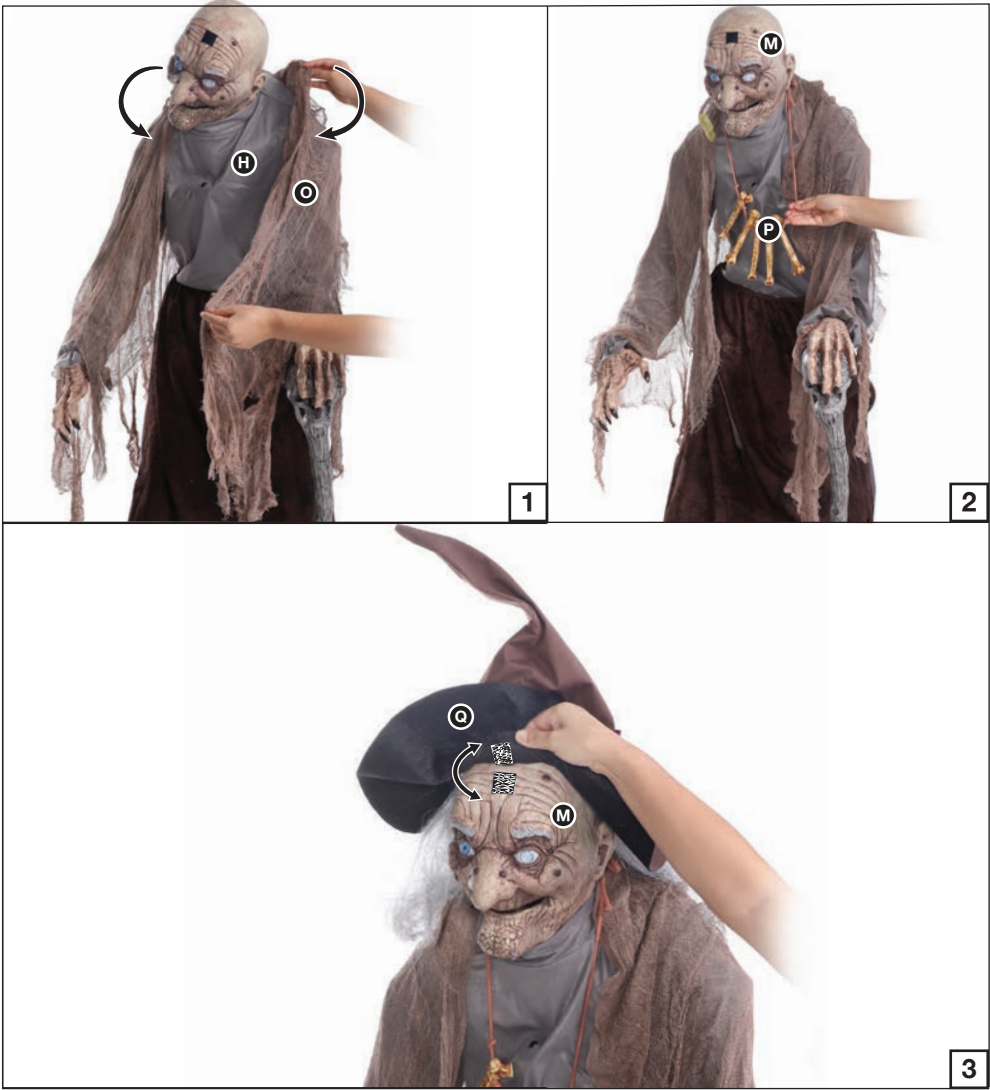
STEP 4
Place the (I) Lower Staff onto the available peg on the (A) Base as shown in Figure 1.
Then slide the (J) Staff and Arm up the left sleeve of the (H) Shirt as shown in Figure 2.
Set the forked hook of the (J) Staff and Arm into the housing available on the left side of the (G) Body Frame and bring the sleeve of the (H) Shirt over the wrist of the (J) Staff and Arm as shown in Figure 3.
Attach the staff of the (J) Staff and Arm to the (I) Lower Staff using an insert and twist motion as shown in Figure 4.



STEP 5
Slide the (K) Right Arm up the right sleeve of the (H) Shirt as shown in Figure 1.
Then set the forked hook of the (K) Right Arm into the housing available at the right side of the (G) Body Frame as shown in Figure 2.
Set the forked hook of the (L) Right Hand into the housing available at the end of the (K) Right Arm and bring the sleeve of the (H) Shirt over the wrist of the (L) Right Hand as shown in Figure 3.
Set the pole available at the bottom of the (M) Head into the housing available at the top of the (G) Body Frame. Turn the thumbscrew at the top of the (G) Body Frame clockwise to secure the (M) Head in place as shown in Figure 4.



STEP 6
Connect all cables from the Function Control Box to their corresponding cable by shape and color as shown in Figure 1.
Attach the Sensor to the hole at the front of the (H) Shirt from the inside using the available hook and loop closure as shown in Figure 2.
Close the back of the (H) Shirt using the available hook and loop closures as shown in Figure 3.
Tie the (N) Apron around the waist of the assembly as shown in Figure 4.



STEP 7
Place the (O) Gauze over the shoulders of the witch as shown in Figure 1.
Then place the (P) Bone Necklace around the witch's neck as shown in Figure 2.
Place the (Q) Hat on the (M) Head and secure in place using the available hook and loop closures as shown in Figure 3.



STEP 8
Your Servo Crone Witch is now fully assembled. Plug in and turn on to let the fun begin!

OPERATION INSTRUCTIONS:

1. Plug the power adapter into a standard power outlet and adjust the settings on the Function Control Box, located on the (G) Body Frame, as desired.
2. Settings:

Sensor /Détecteur	This switch mode will activate lights, sound, and animation when the Infra-red (IR) sensor is activated and will operate for 1 audio-cycle with each activation. The Infra-red (IR) sensor has a range of up to 2 m/6.5 ft. and will activate when someone comes within an 80-degree angle from left-to-right, as well as from above and below.
	This switch mode allows the item to be activated only if triggered by using a Step Here Try Me Activation Pad (Included). The item will operate for one audio cycle with each Try Me activation.
	This switch mode will continually operate the lights, sound, and animation of the item.
	Raise or lower the volume using the volume control turn dial, turn all the way down to turn the volume off .

This device complies with Part 15 of the FCC Rules. Operation is subject to the following two conditions: (1) This device may not cause harmful interference, and (2) this device must accept any interference received, including interference that may cause undesired operation.

CAUTION: Changes or modifications not expressly approved by the party responsible for compliance could void the user’s authority to operate the equipment.

NOTE: This equipment has been tested and found to comply with the limits for a Class B digital device, pursuant to Part 15 of the FCC Rules. These limits are designed to provide reasonable protection against harmful interference in a residential installation. This equipment generates, uses and can radiate radio frequency energy and, if not installed and used in accordance with the instructions, may cause harmful interference to radio communications. However, there is no guarantee that interference will not occur in a particular installation. If this equipment does cause harmful interference to radio or television reception, which can be determined by turning the equipment off and on, the user is encouraged to try to correct the interference by one or more of the following measures: Reorient or relocate the receiving antenna, Increase the separation between the equipment and receiver, Connect the equipment into an outlet on a circuit different from that to which the receiver is connected. Consult the dealer or experienced radio/TV technician for help.

