

EASY ASSEMBLY AND OPERATION INSTRUCTIONS

MR-124904 Hulking Werewolf



Please follow the step by step guide and enjoy your Hulking Werewolf!

Please read all instructions carefully before assembling. Save this instruction sheet for future reference.

CARE AND STORAGE INSTRUCTIONS

For best performance operate your item indoors. When not in use, store this product in its original packing. Keep away from heat and moisture.

⚠ WARNING

This item is not a toy and should be used for decoration only. This item contains small parts that can be a choking hazard. Keep all plastic and wire parts away from children.

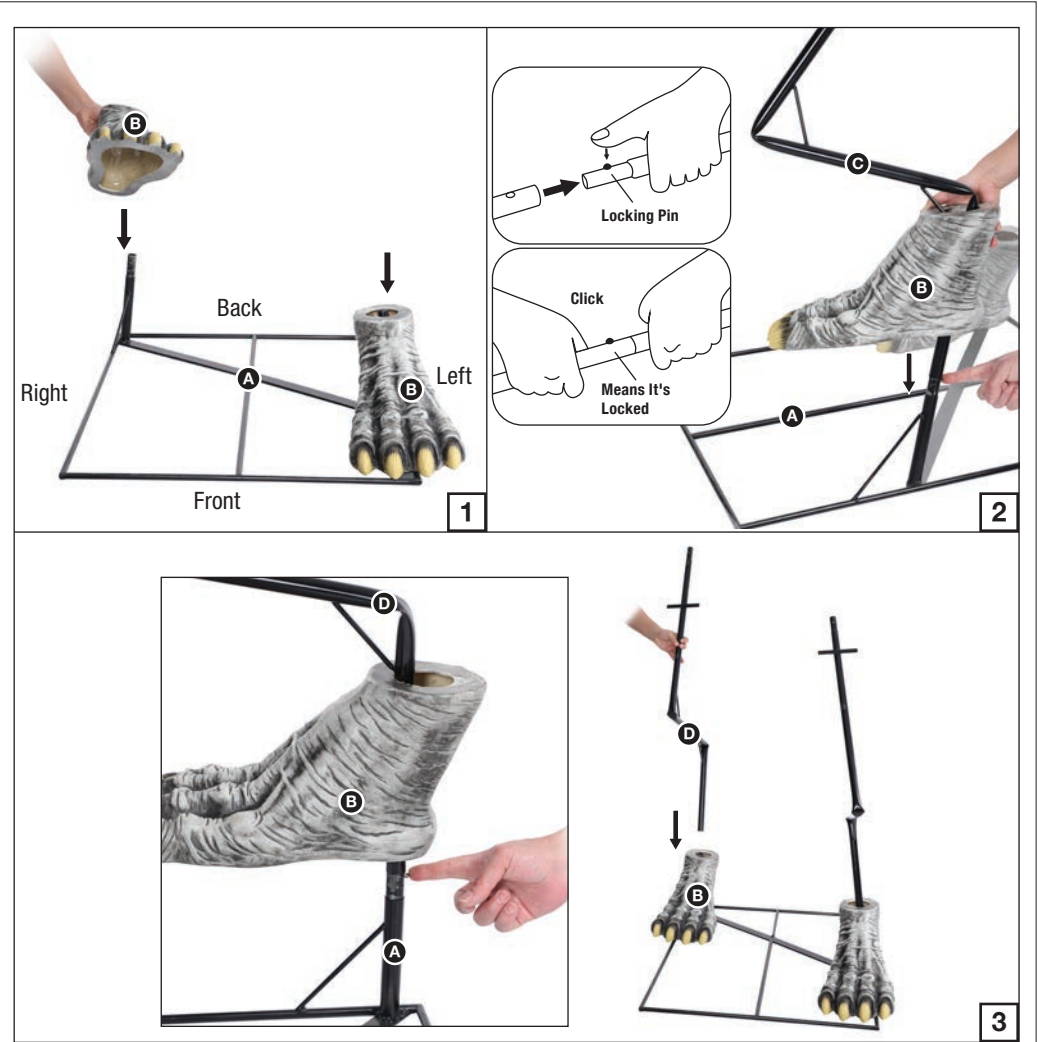
1. Please use the adapter supplied by manufacturer.
2. Please assemble item according to instructions. Connect all wires according to matching color.
3. Children should be supervised by adults. Item should not be grabbed, as it becomes a tipping hazard.
4. Keep all away from the adapter, as it heats up during operation.

PARTS LIST

- A. Base x 1
 - B. Feet x 2
 - C. Left Leg Pole x 1
 - D. Right Leg Pole x 1
 - E. Pants x 1
 - F. Waist Frame x 1
 - G. Thigh Frames x 2
 - H. Zip Ties x 2
 - I. Hip Hoop x 1
 - J. Chest Hoop x 1
 - K. Body Frame x 1
 - L. Shoulder Frame x 1
 - M. Back Frame x 1
 - N. Shirt x 1
 - O. Foam Tubes x 1
 - P. Left Arm x 1
 - Q. Right Arm x 1
 - R. Left Hand x 1
 - S. Right Hand x 1
 - T. Head x 1
 - U. Step Here Pad x 1
 - V. Universal Adapter (Included) x 1
- Input: 100 - 240V AC 50/60Hz
Output: 5.9V 3.0A

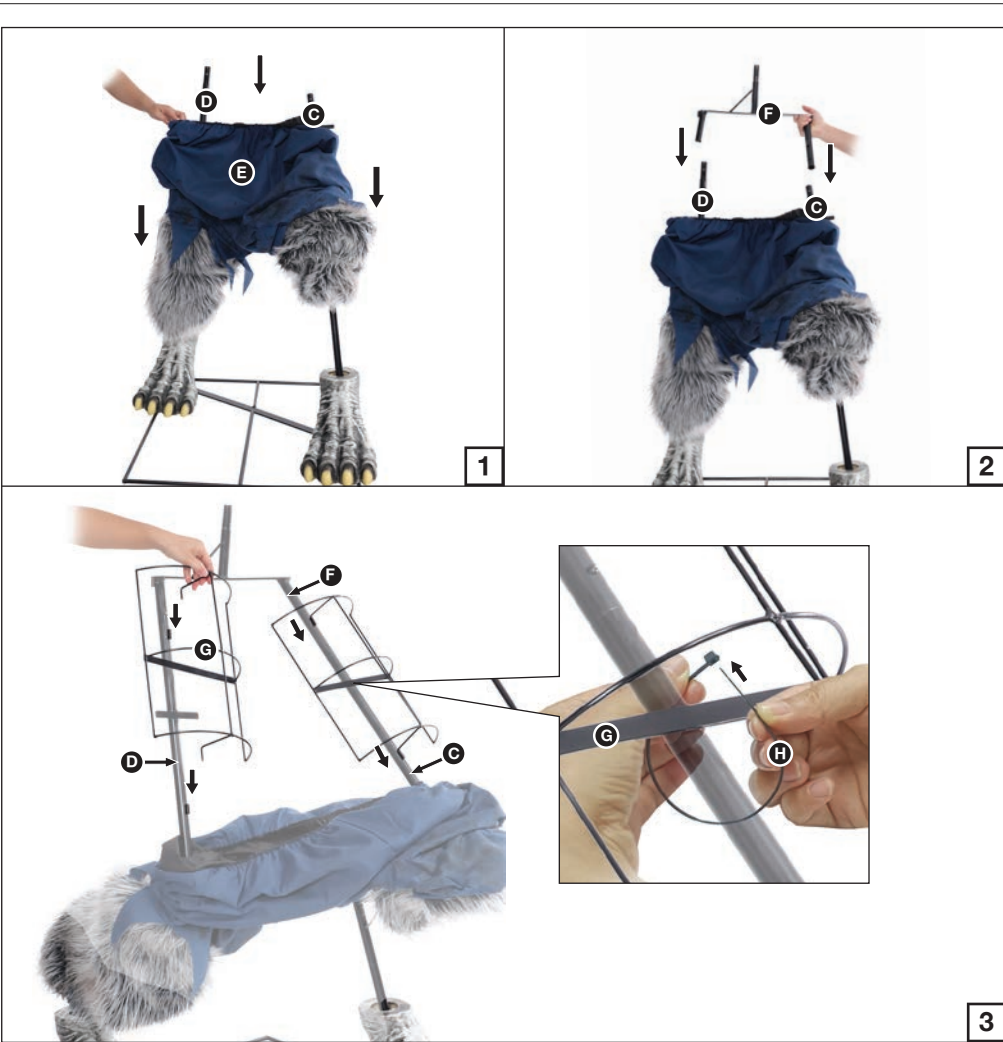


BEFORE ASSEMBLING, REMOVE ALL THE ABOVE PARTS FROM BOX. IF ANY PART IS MISSING, PLEASE CONTACT CUSTOMER SERVICE AT SUPPORT@MORRISCOSTUMES.COM, OR BY PHONE 704-332-3304. IN YOUR EMAIL INQUIRY, PLEASE INCLUDE: YOUR ORDER NUMBER, WHO YOU BOUGHT IT FROM, AND WHAT SPECIFICALLY IS WRONG. THANK YOU.



STEP 1

Note: Throughout the instructions, left and right are from the character's point of view.
Set the (B) Feet onto the poles available on the (A) Base as shown in Figure 1. Bring the (B) Foot on the left side of the (A) Base up over the bottom of the (C) Left Leg Pole and secure the (C) Left Leg Pole to the (A) Base using the available quick connect push button and pre-drilled hole as shown in Figure 2. Bring the remaining (B) Foot on the right side of the (A) Base up over the bottom of the (D) Right Leg Pole and attach the (D) Right Leg Pole to the (A) Base using the quick connect push button and pre-drilled hole as shown in Figure 3.
The (B) Feet should be resting on the (A) Base after the (C, D) Leg Poles are attached.



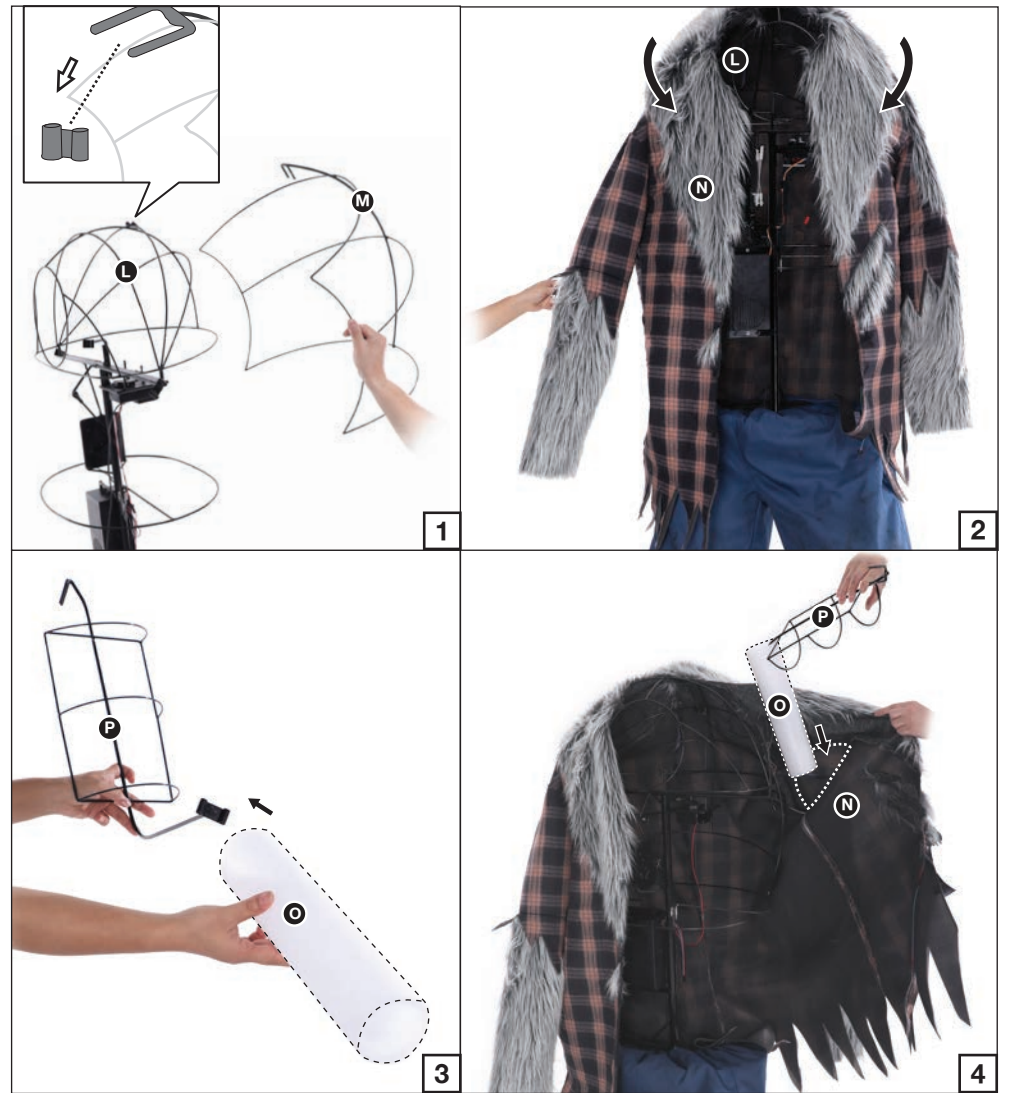
STEP 2

Slip both pant legs of the (E) Pants over the (C, D) Leg Poles as shown in Figure 1 so that the (C, D) Leg Poles emerge from the top of the (E) Pants. Then connect the (F) Waist Frame to the (C, D) Leg Poles using the available quick connect push buttons and pre-drilled holes as shown in Figure 2. Slide the prongs of the (G) Thigh Frames into the housings available on the (C, D) Leg Poles. Then secure the middle sections of the (G) Thigh Frames to the (C, D) Leg Poles using the (H) Zip Ties as shown in Figure 3.



STEP 3

Slide the prongs of the (I) Hip Hoop into the housings available on the (F) Waist Frame as shown in Figure 1. Bring the elastic waist band of the (E) Pants up over the (I) Hip Hoop as shown in Figure 2. Bring the (J) Chest Hoop up around the (K) Body frame from the bottom and set the hook of the (J) Chest Hoop into the housing available on the (K) Body Frame. Then attach the (K) Body Frame to the (F) Waist Frame using the available quick connect push button and pre-drilled hole as shown in Figure 3. Set the prongs of the (L) Shoulder Frame into the housings available at the top of the (K) Body Frame as shown in Figure 4.



STEP 4

Set the forked hook of the (M) Back Frame into the housing available at the back of the (L) Shoulder Frame as shown in Figure 1. Place the (N) Shirt over the upper assembly with the opening of the (N) Shirt at the front as shown in Figure 2. Slide one of the (O) Foam Tubes onto the (P) Left Arm as shown in Figure 3. Slide the foam end of the (P) Left Arm into the left sleeve of the (N) Shirt as shown in Figure 4.



STEP 5

Set the forked hook of the (P) Left Arm into the housing available on the left side of the (K) Body Frame as shown in Figure 1. Slide the remaining (O) Foam Tube onto the (Q) Right Arm as shown in Figure 2. Slide the foam end of the (Q) Right Arm into the right sleeve of the (N) Shirt as shown in Figure 3. Then slide the forked hook of the (Q) Right Arm into the housing available on the right side of the (K) Body Frame as shown in Figure 4.



STEP 6

Slide the forked hook of the (R) Left Hand into the housing available at the end of the (P) Left Arm and attach the left sleeve of the (N) Shirt to the wrist of the (R) Left Hand by using the available hook and loop closure as shown in Figure 1. Then slide the forked hook of the (S) Right Hand into the housing available at the end of the (Q) Right Arm and attach the right sleeve of the (N) Shirt to the wrist of the (S) Right Hand by using the available hook and loop closure as shown in Figure 2. Slide the forked hook of the (T) Head into the housing available at the top of the (K) Body Frame as shown in Figure 3. Connect all the cables from the Function Control Box to their corresponding cables by color and shape as shown in Figure 4.



STEP 7
Attach the Sensor to the hole at the front of the (N) Shirt from the inside by using the hook and loop closure as shown in Figure 1.
Then close the front of the (N) Shirt using the available hook and loop closures as shown in Figure 2.
Your Hulking Werewolf is now fully assembled. Plug in and turn on to let the fun begin!

OPERATION INSTRUCTIONS:

- 1. Plug the power adapter into a standard power outlet and adjust the settings on the Function Control Box, located on the (K) Body Frame, as desired.
- 2. Settings:

Sensor /Détecteur	This switch mode will activate lights, sound, and animation when the Infra-red (IR) sensor is activated and will operate for 1 audio-cycle with each activation. The Infra-red (IR) sensor has a range of up to 2 m/6.5 ft. and will activate when someone comes within an 80-degree angle from left-to-right, as well as from above and below.
○	This switch mode allows the item to be activated only if triggered by using a Step Here Try Me Activation Pad (Included). The item will operate for one audio cycle with each Try Me activation.
I	This switch mode will continually operate the lights, sound, and animation of the item.
⌚	Raise or lower the volume using the volume control turn dial, turn all the way down to turn the volume off .

This device complies with Part 15 of the FCC Rules. Operation is subject to the following two conditions: (1) This device may not cause harmful interference, and (2) this device must accept any interference received, including interference that may cause undesired operation.

CAUTION: Changes or modifications not expressly approved by the party responsible for compliance could void the user’s authority to operate the equipment.

NOTE: This equipment has been tested and found to comply with the limits for a Class B digital device, pursuant to Part 15 of the FCC Rules. These limits are designed to provide reasonable protection against harmful interference in a residential installation. This equipment generates, uses and can radiate radio frequency energy and, if not installed and used in accordance with the instructions, may cause harmful interference to radio communications. However, there is no guarantee that interference will not occur in a particular installation. If this equipment does cause harmful interference to radio or television reception, which can be determined by turning the equipment off and on, the user is encouraged to try to correct the interference by one or more of the following measures: Reorient or relocate the receiving antenna, Increase the separation between the equipment and receiver, Connect the equipment into an outlet on a circuit different from that to which the receiver is connected. Consult the dealer or experienced radio/TV technician for help.

