

# EASY ASSEMBLY AND OPERATION INSTRUCTIONS

MR-124885 Towering Reaper



Please follow the step by step guide and enjoy your Towering Reaper!

### CARE AND STORAGE INSTRUCTIONS

For best performance operate your item indoors. When not in use, store this product in its original packing. Keep away from heat and moisture.

### WARNING

This item is not a toy and should be used for decoration only. This item contains small parts that can be a choking hazard. Keep all plastic and wire parts away from children.

1. Please use the adapter supplied by manufacturer.
2. Please assemble item according to instructions. Connect all wires according to matching color.
3. Children should be supervised by adults. Item should not be grabbed, as it becomes a tipping hazard. Keep all away from the adapter, as it heats up during operation.

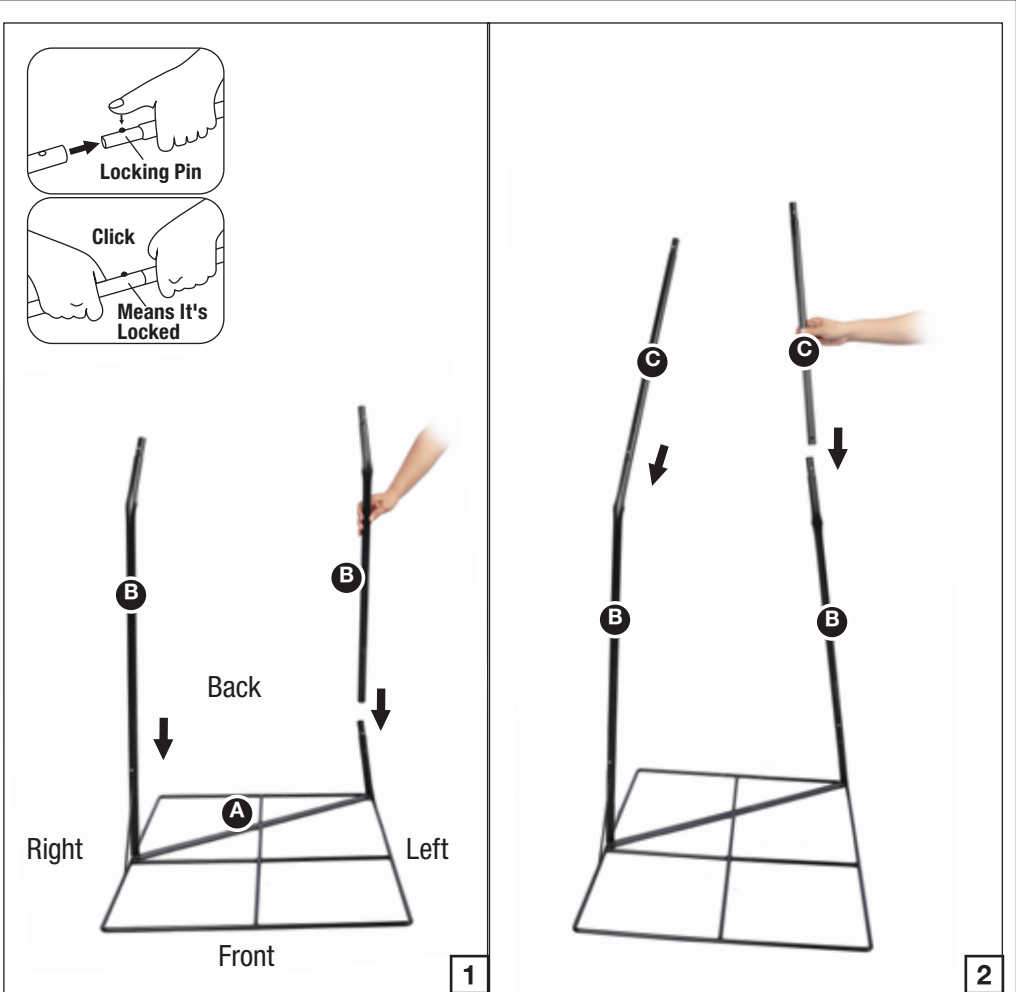
Please read all instructions carefully before assembling. Save this instruction sheet for future reference.

### PARTS LIST

- A. Base x 1
  - B. Lower Support Poles x 2
  - C. Upper Support Poles x 2
  - D. Costume x 1
  - E. Torso Frame x 1
  - F. Hip Hoop x 1
  - G. Upper Torso Frame x 1
  - H. Shoulder Frame x 1
  - I. Spinal Frame x 1
  - J. Chest x 1
  - K. Head x 1
  - L. Right Arm x 1
  - M. Left Arm x 1
  - N. Right Hand x 1
  - O. Left Hand x 1
  - P. Hood x 1
  - Q. Step Pad x 1
  - R. Universal Adapter (Included) x 1
- Input: 100 - 240VAC 50/60Hz  
Output: 5.9V 3.0A

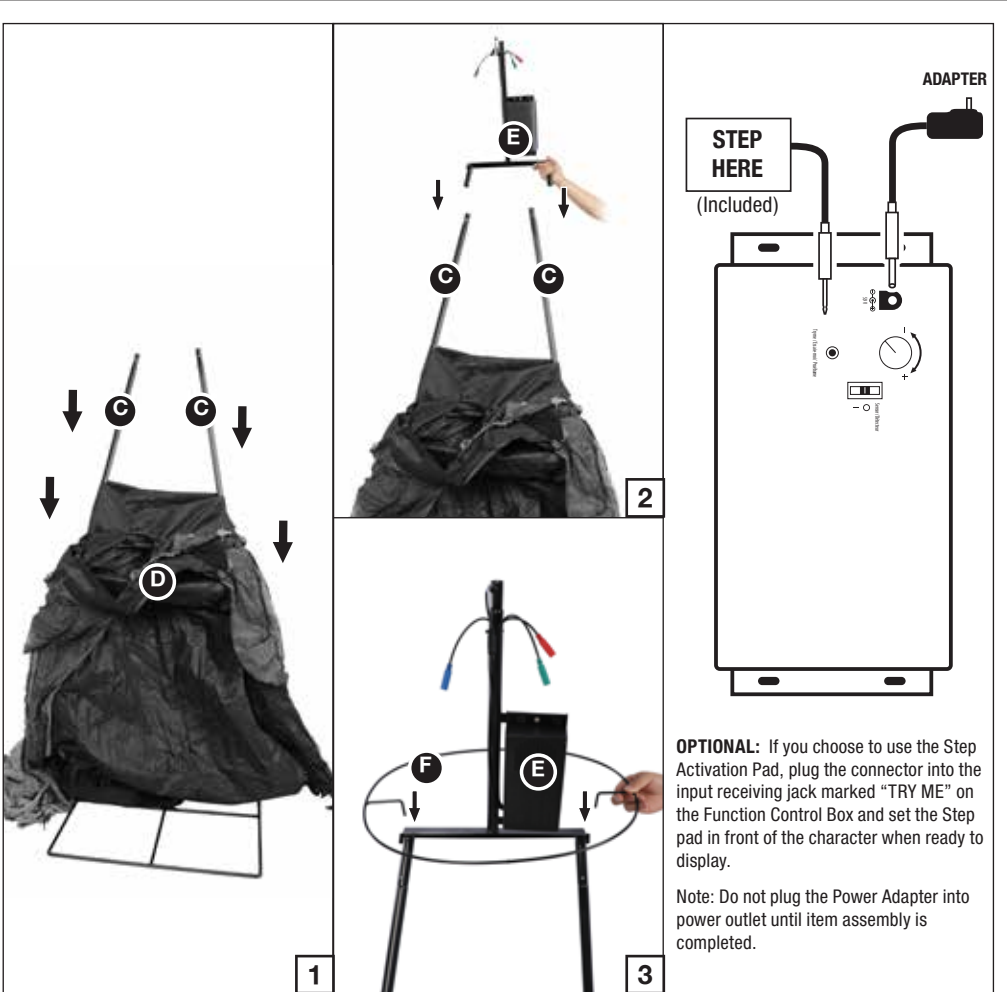


BEFORE ASSEMBLING, REMOVE ALL THE ABOVE PARTS FROM BOX. IF ANY PART IS MISSING, PLEASE CONTACT CUSTOMER SERVICE AT [SUPPORT@MORRISCOSTUMES.COM](mailto:SUPPORT@MORRISCOSTUMES.COM), OR BY PHONE 704-332-3304. IN YOUR EMAIL INQUIRY, PLEASE INCLUDE: YOUR ORDER NUMBER, WHO YOU BOUGHT IT FROM, AND WHAT SPECIFICALLY IS WRONG. THANK YOU.



#### STEP 1

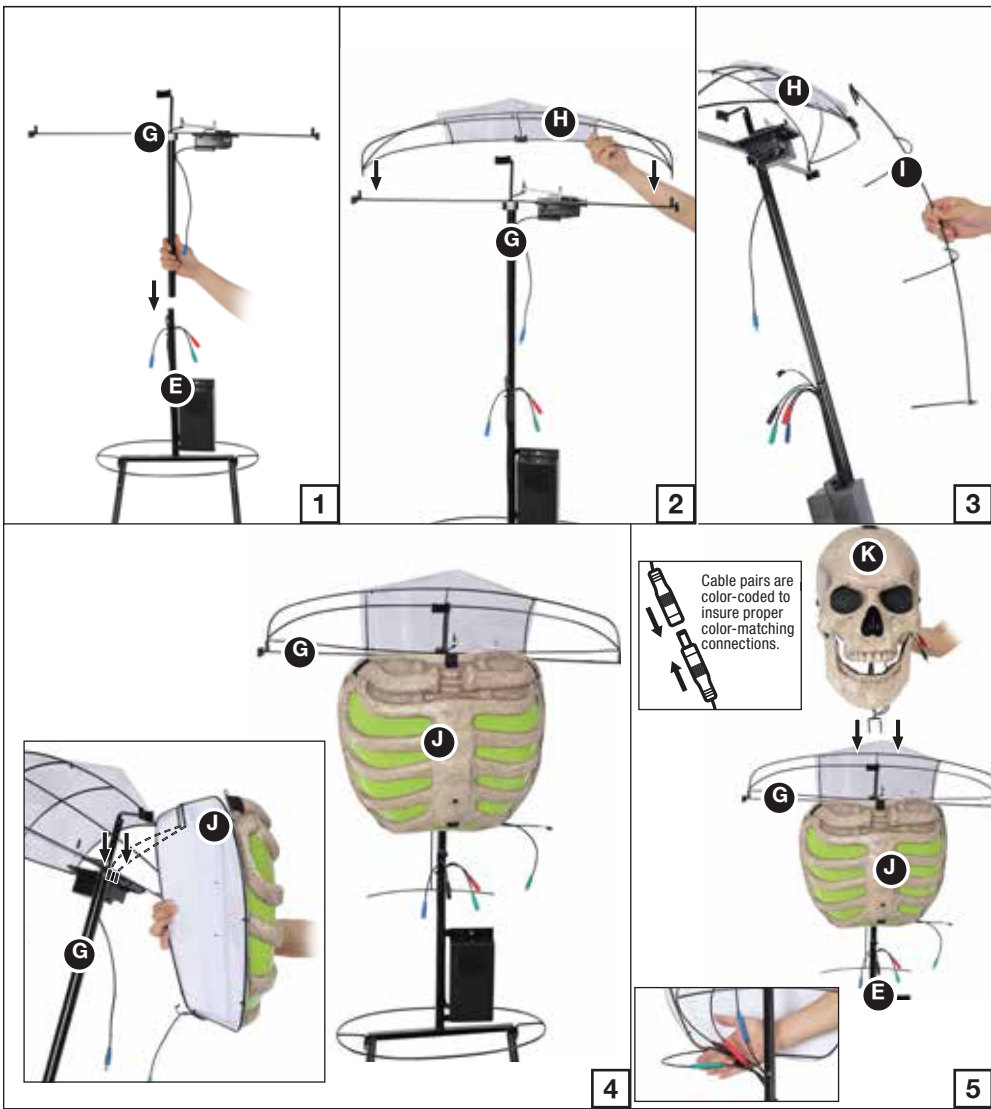
Note: Throughout the instructions, left and Right are relative to the character. A Ladder is recommended for assembly. Two person assembly is recommended. Attach the (B) Lower Support Poles to the (A) Base and secure by aligning the quick connect push buttons into the pre-drilled holes as shown in Figure 1. Attach the (C) Upper Support Poles to the (B) Lower Support Poles and secure by aligning the quick-connect push buttons into the pre-drilled holes as shown in Figure 2.



#### STEP 2

Lower the (D) Costume over the assembled (B,C) Support Poles as shown in Figure 1. NOTE: The speaker on the Function Control Box located on the (E) Torso Frame should be facing front. Assemble the (E) Torso Frame to the (C) Upper Support Poles and secure by aligning the quick connect push buttons into the pre-drilled holes as shown in Figure 2. Lower the (F) Hip Hoop down over the (E) Torso Frame and slide through the slots located on the bottom of the (E) Torso Frame as shown in Figure 3. Now, plug the Adapter into the input receiving jack marked "DC 5.9V" on the Function Control Box and route the Power Adapter down and out the bottom of the item.





**STEP 3**  
 Assemble the (G) Upper Torso onto the (E) Torso Frame and secure by aligning the quick connect push button into the pre-drilled hole as shown in Figure 1.  
 Attach the (H) Shoulder Frame into the slots located on the top of the (G) Upper Torso Frame as shown in Figure 2.  
 Attach the (I) Spinal Frame onto the (H) Shoulder Frame by sliding the forked hook into the slot housing at the back of the (H) Shoulder Frame as shown in Figure 3.  
 Attach the (J) Chest onto the (G) Upper Torso Frame by sliding the forked hook into the slot housing at the (G) Upper Torso Frame as shown in Figure 4.  
 Set the (K) Head onto the (G) Upper Torso Frame and secure by sliding the forked hook into the slot housing at the (G) Upper Torso Frame, then connect the cables from the (K) Head & the (J) Chest to the corresponding cables on the (E) Torso Frame as shown in Figure 5.



**STEP 4**  
 Slide the (L) Right Arm up through the right sleeve and slide the forked hook into the right "shoulder" slot housing on the (G) Upper Torso Frame as shown in Figures 1 & 2.  
 Slide the forked hook of the (N) Right Hand into the slot located on the (L) Right Arm then secure the hook & loop closures at the wrist as shown in Figure 3.  
 Slide the (M) Left Arm up through the left sleeve and slide the forked hook into the left "shoulder" slot housing on the (G) Shoulder Frame as shown in Figures 4 & 5.  
 Slide the forked hook of the (O) Right Hand into the slot located on the (M) Right Arm then secure the hook & loop closures at the wrist as shown in Figure 6.



**STEP 5**  
 Secure the back of the (D) Costume with the hook & loop closures as shown in Figure 1.  
 Secure the (J) Chest to the (D) Costume with the hook & loop closures as shown in Figures 2, 3, & 4.



**STEP 6**  
 Put the neck of the (P) Hood through the (K) Head as shown in Figure 1.  
 Secure the (P) Hood to the (K) Head with the hook & loop closure then secure the back of the (P) Hood with the hook & loop closure as shown in Figure 2.  
 Your Towering Reaper is now fully assembled. Plug in and turn on to let the fun begin!

OPERATION INSTRUCTIONS:

1. Plug the Adapter into a standard power outlet and adjust the settings on the Function Control Box as desired.

2. Settings:

Sensor: This switch mode will activate lights, sound, and animation when the Infra-red (IR) sensor is activated and will operate for 1 audio-cycle with each activation. The Infra-red (IR) sensor has a range of up to 2 m/6.5 ft. and will activate when someone comes within an 80-degree angle from left-to-right, as well as from above and below.

○/OFF/Try Me: This switch mode allows the item to be activated only if triggered by using a Step Here Try Me Activation Pad. The item will operate for one audio cycle with each Try Me activation. Refer to Assembly Instructions Step 2 for further details.

I / ON : This switch mode will continuously operate the lights, sound, and animation of the item.

 : Raise or lower the volume using the volume control turn dial, turn all the way down to turn the volume off.

This device complies with Part 15 of the FCC Rules. Operation is subject to the following two conditions: (1) This device may not cause harmful interference, and (2) this device must accept any interference received, including interference that may cause undesired operation.

**CAUTION:** Changes or modifications not expressly approved by the party responsible for compliance could void the user’s authority to operate the equipment.

**NOTE:** This equipment has been tested and found to comply with the limits for a Class B digital device, pursuant to Part 15 of the FCC Rules. These limits are designed to provide reasonable protection against harmful interference in a residential installation. This equipment generates, uses, and can radiate radio frequency energy and, if not installed and used in accordance with the instructions, may cause harmful interference to radio communications. However, there is no guarantee that interference will not occur in a particular installation. If this equipment does cause harmful interference to radio or television reception, which can be determined by turning the equipment off and on, the user is encouraged to try to correct the interference by one or more of the following measures: Reorient or relocate the receiving antenna, Increase the separation between the equipment and receiver, Connect the equipment into an outlet on a circuit different from that to which the receiver is connected. Consult the dealer or experienced radio/TV technician for help.

