

# EASY ASSEMBLY AND OPERATION INSTRUCTIONS

MR-124882 Tumbling Clown Doll



Please follow the step by step guide and enjoy your Tumbling Clown Doll!

Please read all instructions carefully before assembling. Save this instruction sheet for future reference.

### CARE AND STORAGE INSTRUCTIONS

For best performance operate your item indoors. When not in use, store this product in its original packing. Keep away from heat and moisture.

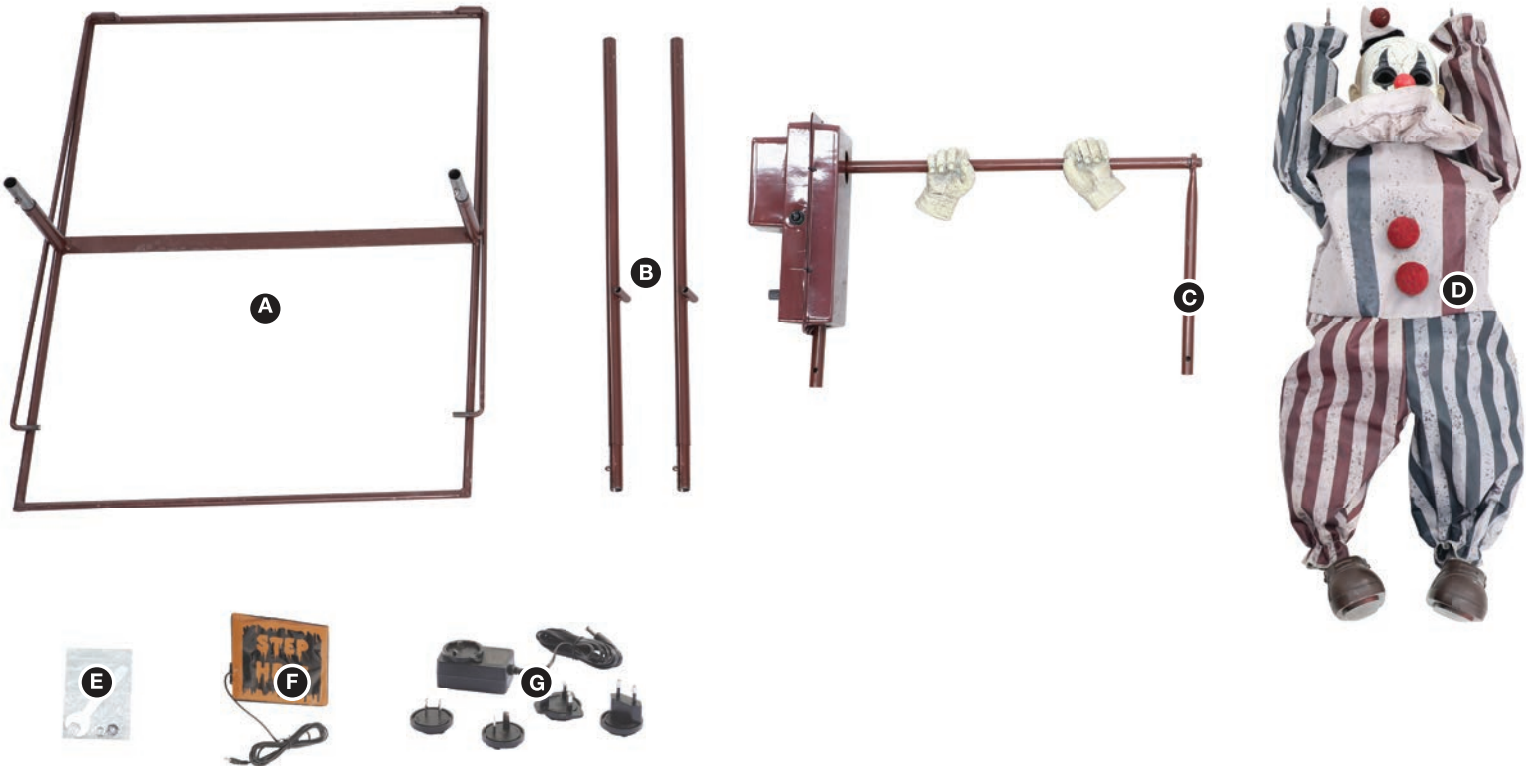
### ⚠ WARNING

This item is not a toy and should be used for decoration only. This item contains small parts that can be a choking hazard. Keep all plastic and wire parts away from children.

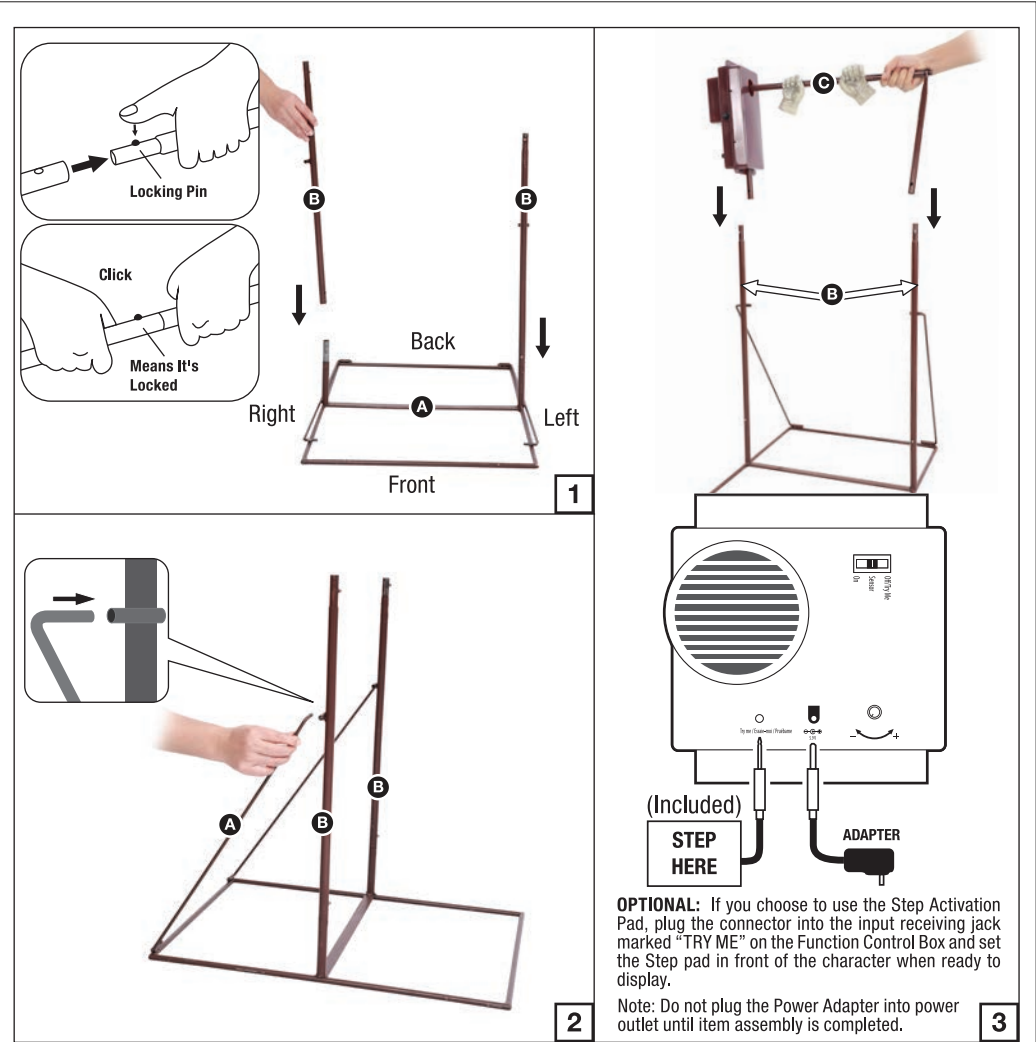
1. Please use the adapter supplied by manufacturer.
2. Please assemble item according to instructions. Connect all wires according to matching color.
3. Children should be supervised by adults. Item should not be grabbed, as it becomes a tipping hazard.
4. Keep all away from the adapter, as it heats up during operation.

### PARTS LIST

- A. Base x 1
  - B. Poles x 2
  - C. Rotating Pole x 1
  - D. Clown x 1
  - E. Wrench and Nuts Bag x 1
  - F. Step Here Pad x 1
  - G. Universal Adapter (Included) x 1
- Input: 100 - 240V AC 50/60Hz  
Output: 5.9V 3.0A



BEFORE ASSEMBLING, REMOVE ALL THE ABOVE PARTS FROM BOX. IF ANY PART IS MISSING, PLEASE CONTACT CUSTOMER SERVICE AT [SUPPORT@MORRISCOSTUMES.COM](mailto:SUPPORT@MORRISCOSTUMES.COM), OR BY PHONE 704-332-3304. IN YOUR EMAIL INQUIRY, PLEASE INCLUDE: YOUR ORDER NUMBER, WHO YOU BOUGHT IT FROM, AND WHAT SPECIFICALLY IS WRONG. THANK YOU.



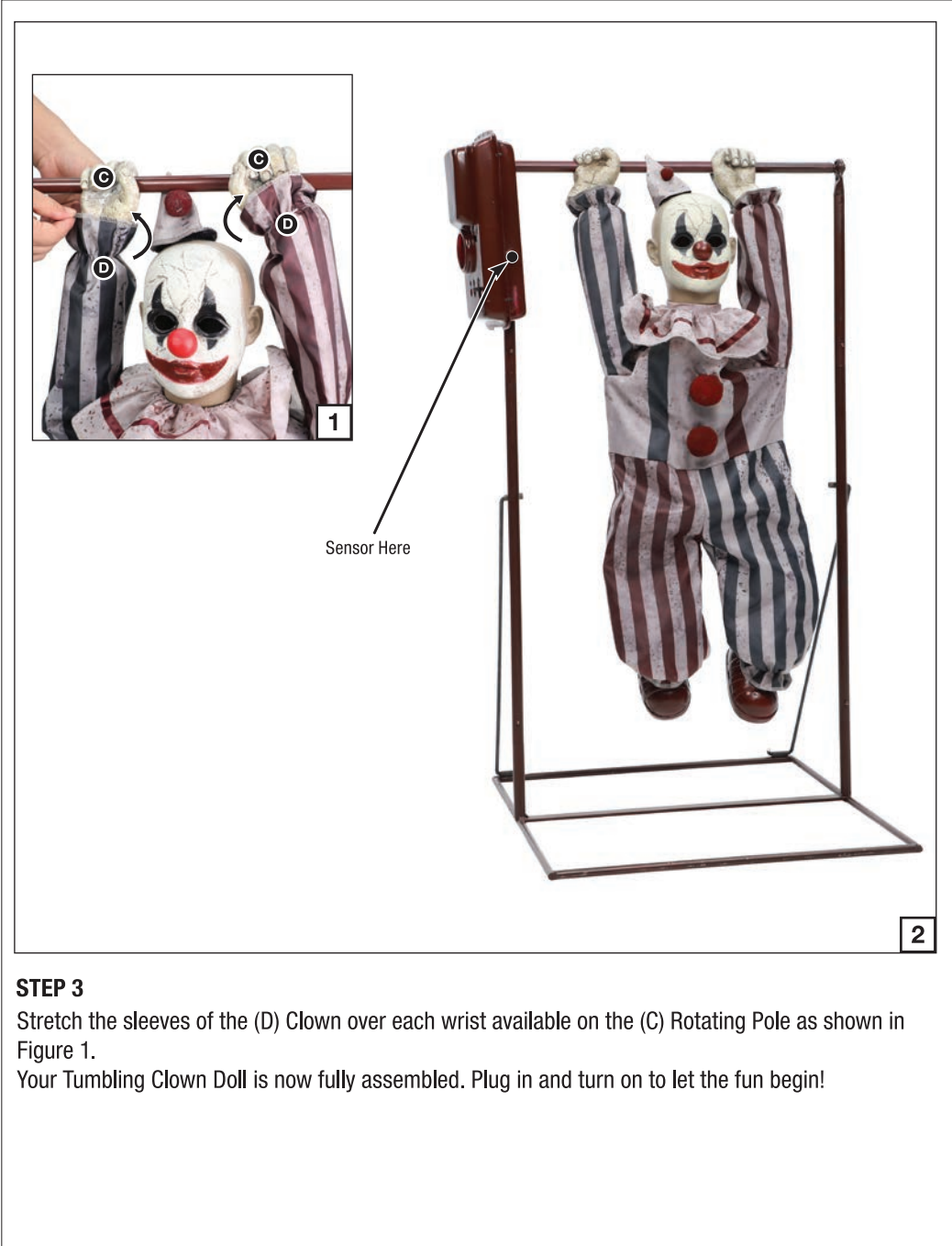
#### STEP 1

Connect the (B) Poles to the (A) Base using the available pre-drilled holes and quick connect push buttons as shown in Figure 1.  
Lift the struts from the (A) Base and slide them into the housings available on the (B) Poles as shown in Figure 2.  
Attach the (C) Rotating Pole to the (B) Poles using the available quick connect push buttons and pre-drilled holes as shown in Figure 3.  
Now, plug the Adapter into the input receiving jack marked "DC 5.9V" on the Function Control Box and route the Power Adapter down and out the bottom of the item.



#### STEP 2

Insert the threaded arm ends of the (D) Clown through the (C) Rotating Pole as shown in Figure 1.  
Tighten the nuts from the (E) Wrench and Nuts Bag onto the threaded ends of the (D) Clown arms using the wrench as shown in Figure 2.  
Slide the hands available on the (C) Rotating Pole over each threaded end and bolt as shown in Figures 3 and 4.



**STEP 3**  
Stretch the sleeves of the (D) Clown over each wrist available on the (C) Rotating Pole as shown in Figure 1.  
Your Tumbling Clown Doll is now fully assembled. Plug in and turn on to let the fun begin!

OPERATION INSTRUCTIONS:

1. Plug the power adapter into a standard power outlet and adjust the settings on the Function Control Box, located on the (C) Rotating Pole, as desired.
2. Settings:

Sensor	This switch mode will activate lights, sound, and animation when the Infra-red (IR) sensor is activated and will operate for 1 audio-cycle with each activation. The Infra-red (IR) sensor has a range of up to 2 m/6.5 ft. and will activate when someone comes within an 80-degree angle from left-to-right, as well as from above and below.
Off/Try Me	This switch mode allows the item to be activated only if triggered by using a Step Here Try Me Activation Pad (Included). The item will operate for one audio cycle with each Try Me activation.
On	This switch mode will continually operate the lights, sound, and animation of the item.
	Raise or lower the volume using the volume control turn dial, turn all the way down to turn the volume off .

This device complies with Part 15 of the FCC Rules. Operation is subject to the following two conditions: (1) This device may not cause harmful interference, and (2) this device must accept any interference received, including interference that may cause undesired operation.

**CAUTION:** Changes or modifications not expressly approved by the party responsible for compliance could void the user's authority to operate the equipment.

**NOTE:** This equipment has been tested and found to comply with the limits for a Class B digital device, pursuant to Part 15 of the FCC Rules. These limits are designed to provide reasonable protection against harmful interference in a residential installation. This equipment generates, uses and can radiate radio frequency energy and, if not installed and used in accordance with the instructions, may cause harmful interference to radio communications. However, there is no guarantee that interference will not occur in a particular installation. If this equipment does cause harmful interference to radio or television reception, which can be determined by turning the equipment off and on, the user is encouraged to try to correct the interference by one or more of the following measures: Reorient or relocate the receiving antenna, Increase the separation between the equipment and receiver, Connect the equipment into an outlet on a circuit different from that to which the receiver is connected. Consult the dealer or experienced radio/TV technician for help.

