

EASY ASSEMBLY AND OPERATION INSTRUCTIONS

MR-124880 Cotton Candice



Please follow the step by step guide and enjoy your Cotton Candice!

WARNING

This item is not a toy and should be used for decoration only. This item contains small parts that can be a choking hazard. Keep all plastic and wire parts away from children.

1. Please use the adapter supplied by manufacturer.
2. Please assemble item according to instructions. Connect all wires according to matching color.
3. Children should be supervised by adults. Item should not be grabbed, as it becomes a tipping hazard. Keep all away from the adapter, as it heats up during operation.

CARE AND STORAGE INSTRUCTIONS

For best performance operate your item indoors. When not in use, store this product in its original packing. Keep away from heat and moisture.

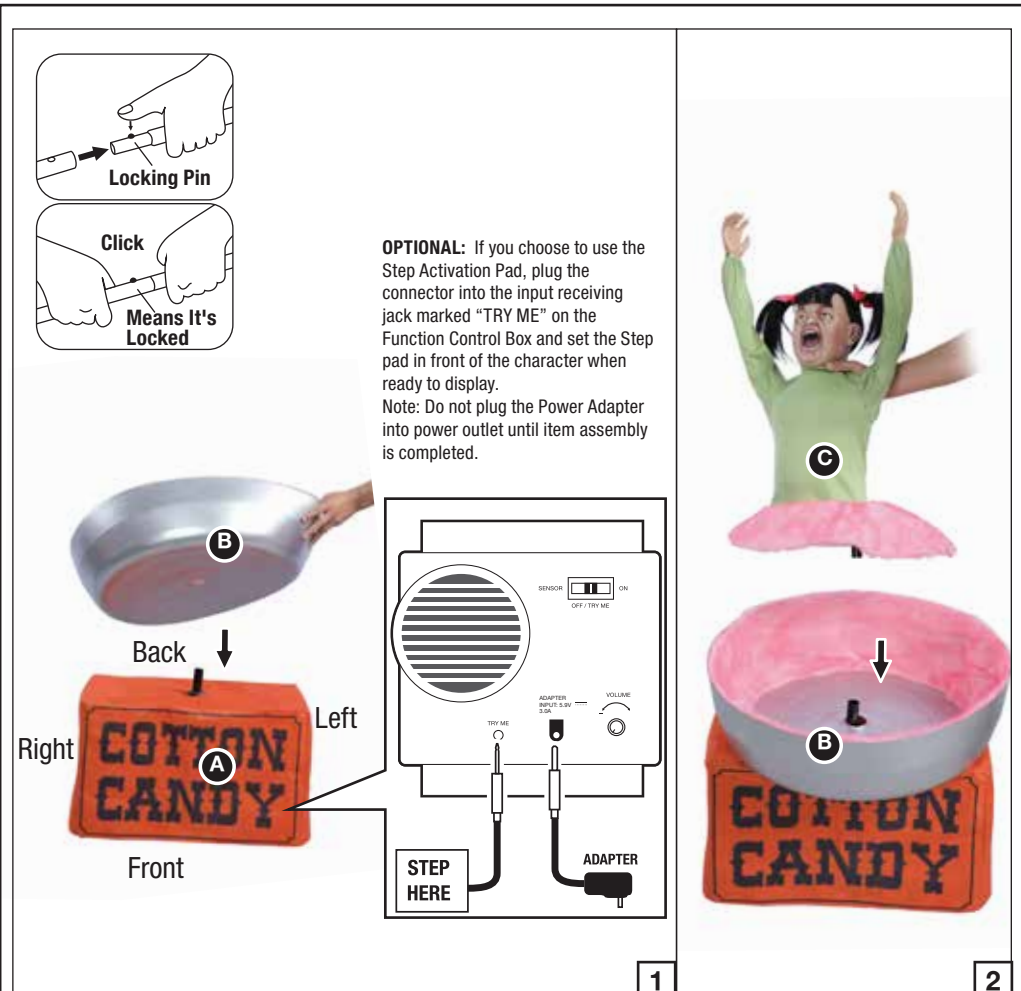
Please read all instructions carefully before assembling. Save this instruction sheet for future reference.

PARTS LIST

- A. Base x 1
 - B. Bowl x1
 - C. Child x 1
 - D. Rack x 1
 - E. Cotton Candies x 2
 - F. Step Pad x 1
 - G. Universal Adapter (Included) x 1
- Input: 100 - 240VAC 50/60Hz
Output: 5.9V 3.0A



BEFORE ASSEMBLING, REMOVE ALL THE ABOVE PARTS FROM BOX. IF ANY PART IS MISSING, PLEASE CONTACT CUSTOMER SERVICE AT SUPPORT@MORRISCOSTUMES.COM, OR BY PHONE 704-332-3304. IN YOUR EMAIL INQUIRY, PLEASE INCLUDE: YOUR ORDER NUMBER, WHO YOU BOUGHT IT FROM, AND WHAT SPECIFICALLY IS WRONG. THANK YOU.



STEP 1
Note: Throughout the instructions, right and left are relative to the character.
Place the (B) Bowl onto the (A) Base so that the pole from the (A) Base emerges through the hole in the middle of the (B) Bowl as shown in Figure 1.
Then connect the (C) Child to the pole available from the (A) Base as shown in Figure 2.



STEP 2
Set the prongs of the (D) Rack into the housings available through the holes of the fabric on the side of the (A) Base as shown in Figure 1.
Then set the two (E) Cotton Candies in each loop available in the (D) Rack as shown in Figure 2.
Your Cotton Candice is now fully assembled. Plug in and turn on to let the fun begin!

OPERATION INSTRUCTIONS:

1. Plug the Adapter into a standard power outlet and adjust the settings on the Function Control Box as desired.

2. Settings:

On: This setting allows the item to run continuously.

Off/Try-Me: This switch mode allows the item to be activated only if triggered by using a Step Here Try Me Activation Pad. The item will operate for one audio cycle with each Try-Me activation. Refer to Assembly Instructions Step 1 for further details.

Sensor: This switch mode will activate sound, and animation when the sound sensor is activated and will operate for 1 audio-cycle with each activation.

 : Raise or lower the volume using the volume control turn dial, turn all the way down to turn the volume off.

This device complies with Part 15 of the FCC Rules. Operation is subject to the following two conditions: (1) This device may not cause harmful interference, and (2) this device must accept any interference received, including interference that may cause undesired operation.

CAUTION: Changes or modifications not expressly approved by the party responsible for compliance could void the user's authority to operate the equipment.

NOTE: This equipment has been tested and found to comply with the limits for a Class B digital device, pursuant to Part 15 of the FCC Rules. These limits are designed to provide reasonable protection against harmful interference in a residential installation. This equipment generates, uses, and can radiate radio frequency energy and, if not installed and used in accordance with the instructions, may cause harmful interference to radio communications. However, there is no guarantee that interference will not occur in a particular installation. If this equipment does cause harmful interference to radio or television reception, which can be determined by turning the equipment off and on, the user is encouraged to try to correct the interference by one or more of the following measures: Reorient or relocate the receiving antenna, Increase the separation between the equipment and receiver, Connect the equipment into an outlet on a circuit different from that to which the receiver is connected. Consult the dealer or experienced radio/TV technician for help.

