

EASY ASSEMBLY AND OPERATION INSTRUCTIONS

MR-124764 Reaper's Ride

Please follow the step by step guide and enjoy your Reaper's Ride!

CARE AND STORAGE INSTRUCTIONS

For best performance operate your item indoors. When not in use, store this product in its original packing. Keep away from heat and moisture.

WARNING

This item is not a toy and should be used for decoration only. This item contains small parts that can be a choking hazard. Keep all plastic and wire parts away from children.

1. Please use the adapter supplied by manufacturer.
2. Please assemble item according to instructions. Connect all wires according to matching color.
3. Children should be supervised by adults. Item should not be grabbed, as it becomes a tipping hazard. Keep all away from the adapter, as it heats up during operation.

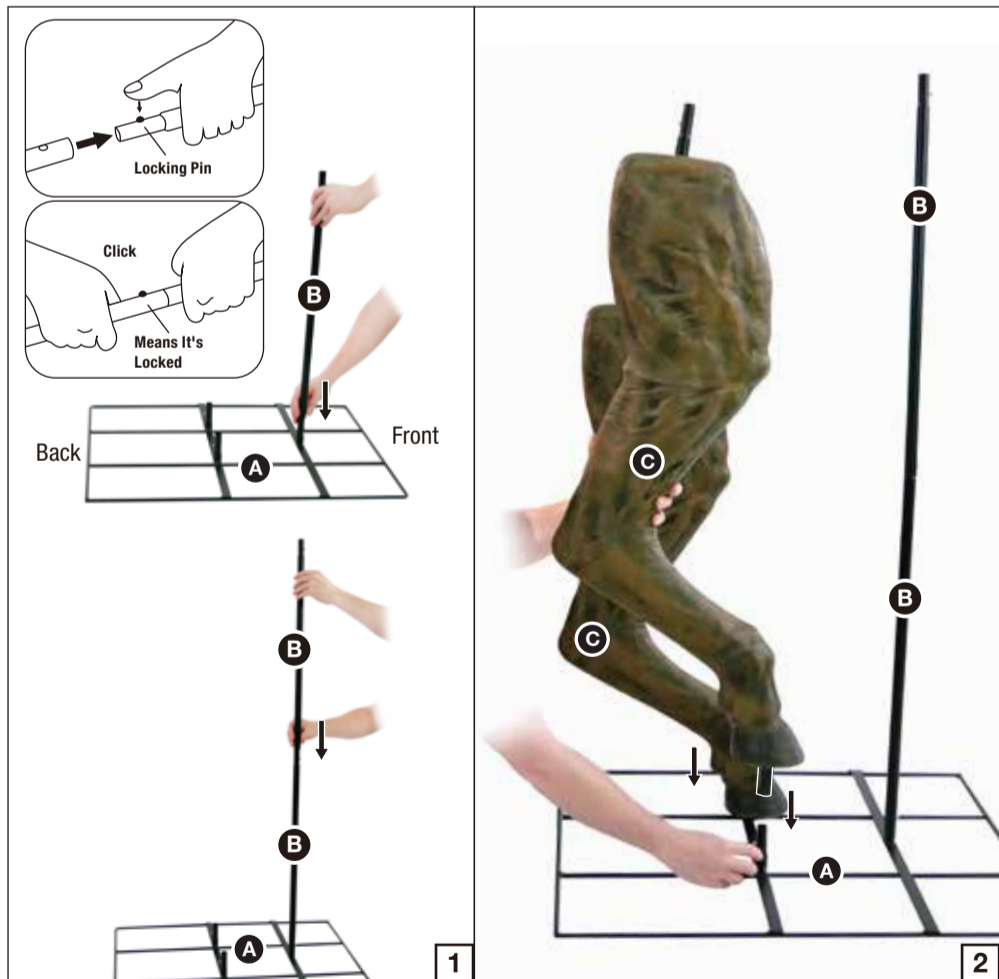
Please read all instructions carefully before assembling. Save this instruction sheet for future reference.

PARTS LIST

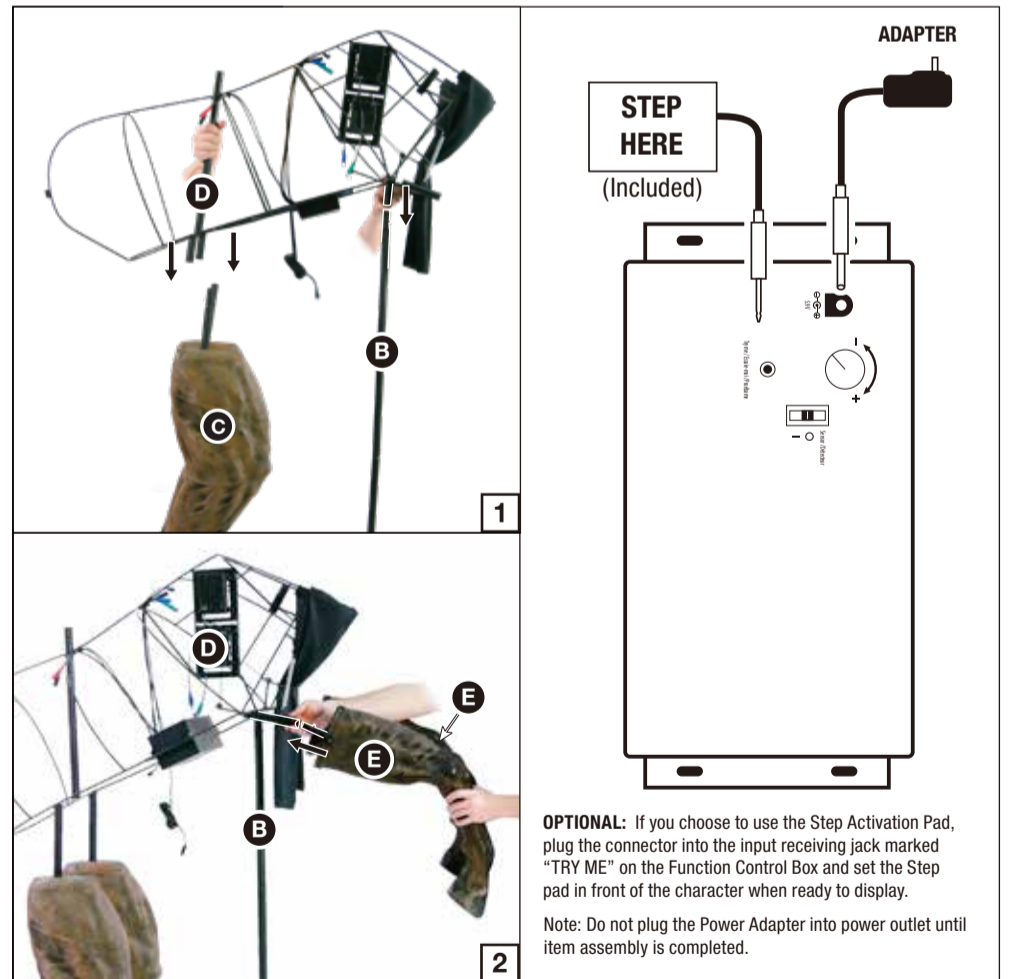
- A. Base x 1
 - B. Support Poles x 2
 - C. Legs x 2
 - D. Body Frame x 1
 - E. Front Legs x 2
 - F. Horse Head x 1
 - G. Horse Cloak x 1
 - H. Torso Frame x 1
 - I. Costume x 1
 - J. Tail x 1
 - K. Right Arm x 1
 - L. Left Arm x 1
 - M. Middle Scythe Poles x 3
 - N. Scythe Pole with Rubber Ring x 1
 - O. Upper Scythe Pole x 1
 - P. Bottom Scythe Pole x 1
 - Q. Right Leg x 1
 - R. Left Leg x 1
 - S. Head x 1
 - T. Fog Hose x 1
 - U. Fog Machine Adapter x 1
 - V. Moisture Trap Tank x 1
 - W. Step Pad x 1
 - X. Adapter (Included) x 1
- Input: 100 - 240VAC 50/60Hz
Output: 5.9V 3.0A



BEFORE ASSEMBLING, REMOVE ALL THE ABOVE PARTS FROM BOX. IF ANY PART IS MISSING OR BROKEN, PLEASE CONTACT CUSTOMER SERVICE AT SUPPORT@MORRISCOSTUMES.COM, OR BY PHONE 704-332-3304. IN YOUR EMAIL INQUIRY, PLEASE INCLUDE: YOUR ORDER NUMBER, WHO YOU BOUGHT IT FROM, AND WHAT SPECIFICALLY IS WRONG. THANK YOU.

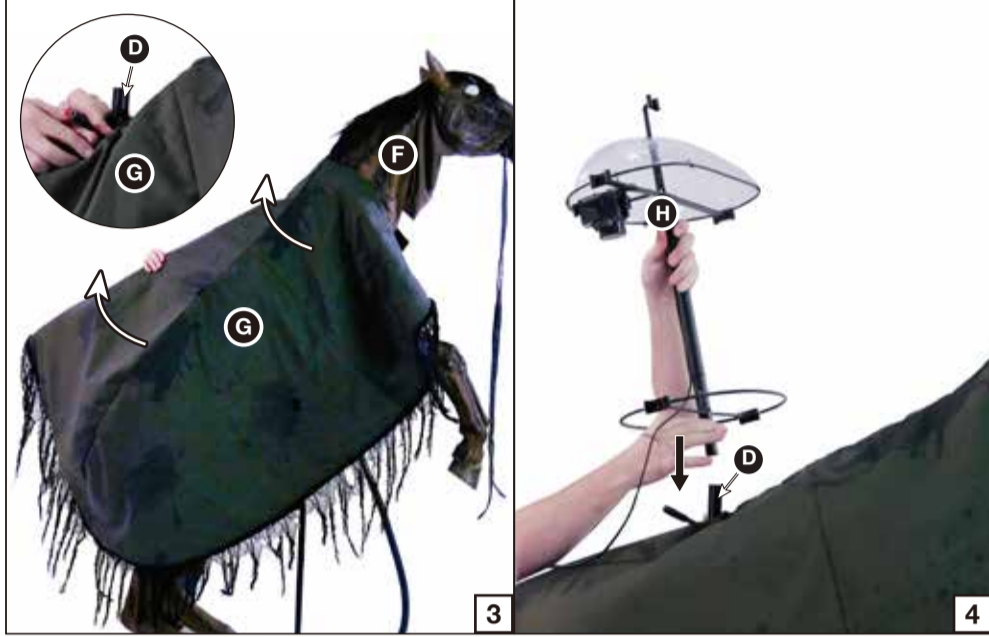
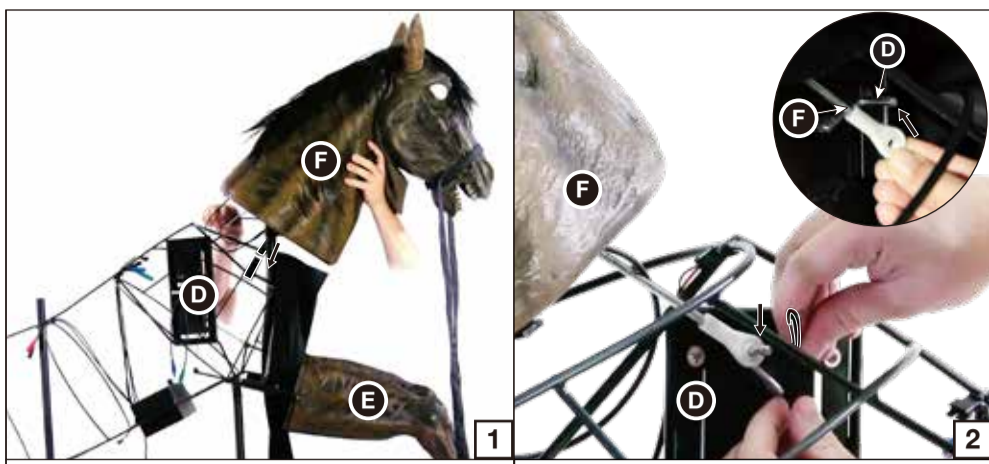


STEP 1
Attach the (B) Support Pole to the (A) Base and attach the remaining (B) Support Pole to the (B) Support Pole and secure by aligning the quick-connect push buttons into the pre-drilled holes as shown in Figure 1.
Attach the (C) Legs to the (A) Base and secure by aligning the quick-connect push buttons into the pre-drilled holes as shown in Figure 2.



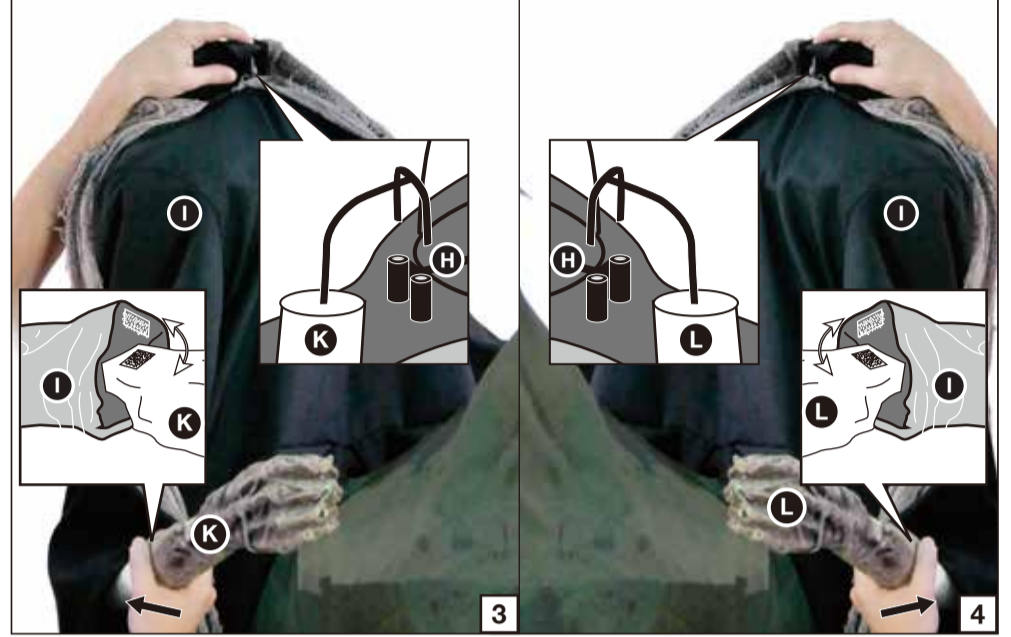
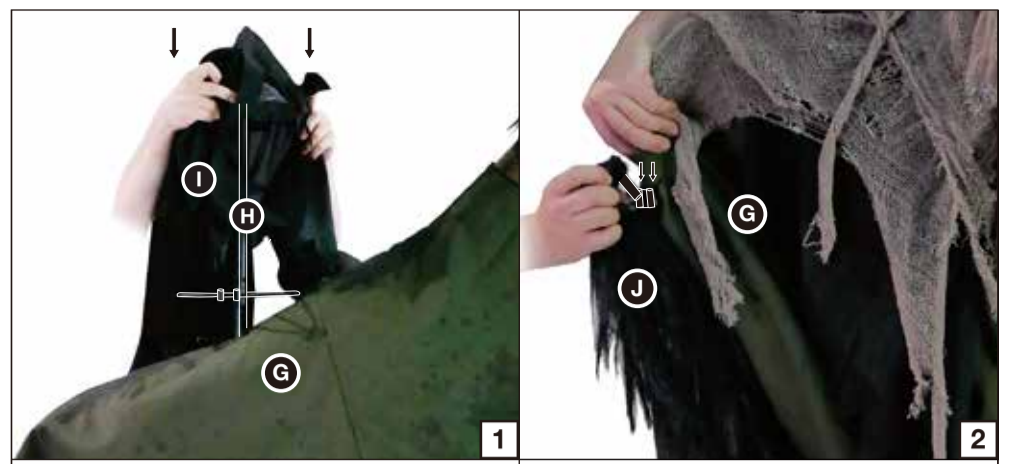
STEP 2
Attach the (D) Body Frame to the (B) Support Pole and (C) Legs and secure by aligning the quick-connect push buttons into the pre-drilled holes as shown in Figure 1.
Attach the (E) Front Legs to the (D) Body Frame and secure by aligning the quick-connect push buttons into the pre-drilled holes as shown in Figure 2.
Now, plug the Adapter into the input receiving jack marked "DC 5.9V" on the Function Control Box and route the Power Adapter down and out the bottom of the item.

OPTIONAL: If you choose to use the Step Activation Pad, plug the connector into the input receiving jack marked "TRY ME" on the Function Control Box and set the Step pad in front of the character when ready to display.
Note: Do not plug the Power Adapter into power outlet until item assembly is completed.



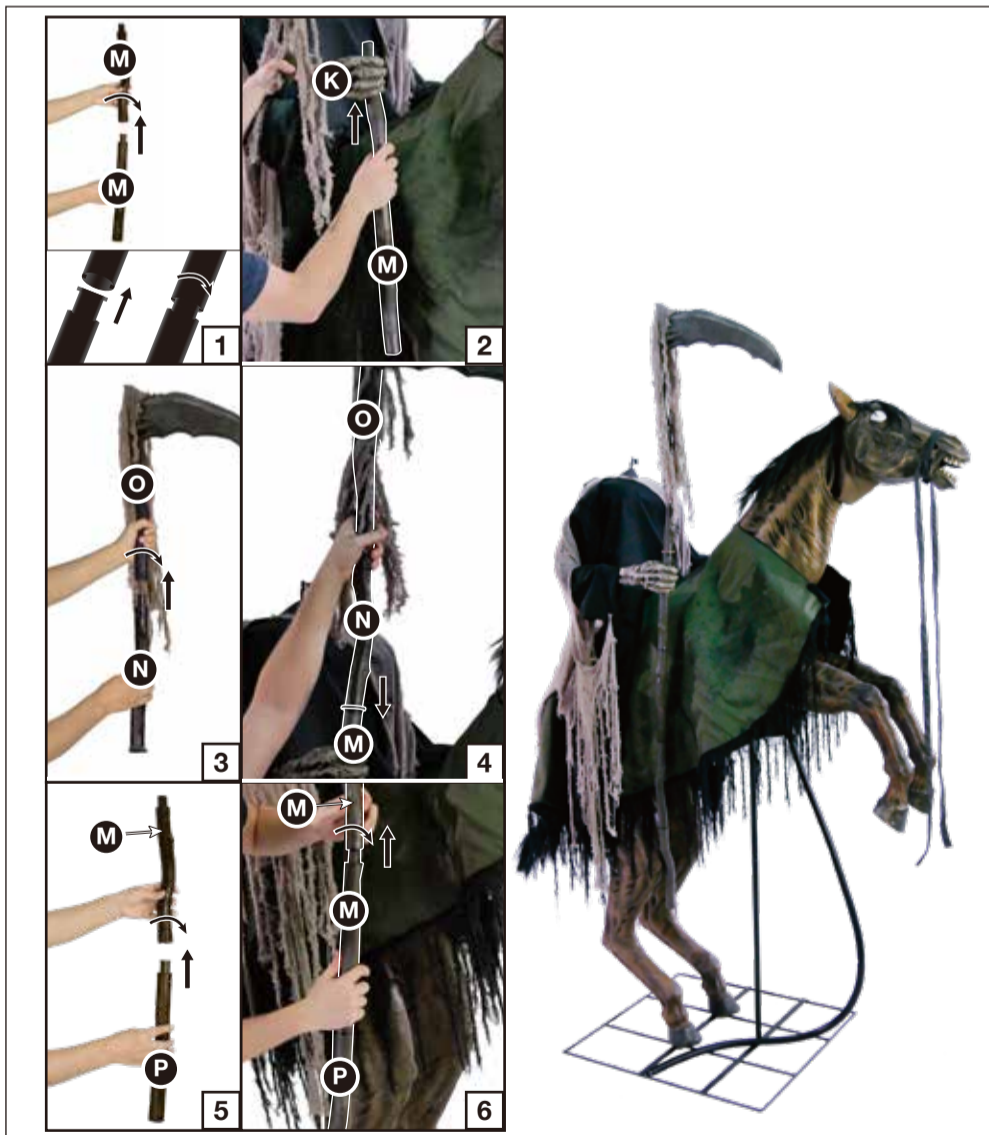
STEP 3

Assemble the (F) Horse Head to the (D) Body Frame and secure by aligning the quick-connect push button into the pre-drilled hole as shown in Figure 1.
 Remove the cotter pin from the motor available near the front of the (D) Body Frame. Slide the connection rod available from the (F) Horse Head over the moving component on that same motor and reinsert the cotter pin.
 Place the (G) Cloak over the (D) Body Frame and pull the cables and pole available at the top of the (D) Body Frame as shown in Figure 3.
 Attach the (H) Torso Frame to the (D) Body Frame and secure by aligning the quick-connect push buttons into the pre-drilled holes as shown in Figure 4.



STEP 4

Place the (I) Costume over the (H) Torso Frame as shown in Figure 1.
 Set the (J) Tail onto the (D) Body Frame by sliding the forked hook into the slot housing on the (D) Body Frame as shown in Figure 2.
 Slide the (K) Right Arm up through the right sleeve and slide the forked hook into the right "shoulder" slot housing on the (H) Torso Frame as shown in Figure 3.
 Slide the (L) Left Arm up through the left sleeve and slide the forked hook into the left "shoulder" slot housing on the (H) Torso Frame as shown in Figure 4.



STEP 5

Assemble one (M) Middle Scythe Pole to another (M) Middle Scythe Pole with an insert and twist motion as shown in Figure 1.
 Slide the assembled (M) Middle Scythe Poles through the (K) Right Arm as shown in Figure 2.
 Assemble the (N) Scythe Pole with Rubber Ring to the (O) Upper Scythe Pole as shown in Figure 3.
 Attached the assembled (N) Scythe Pole with Rubber Ring & (O) Upper Scythe Pole to the (M) Middle Scythe Pole as shown in Figure 4.
 Assemble the (P) Bottom Scythe Pole to the (M) Middle Scythe Pole then slide to the (M) Middle Scythe Pole as shown in Figure 5 & 6.



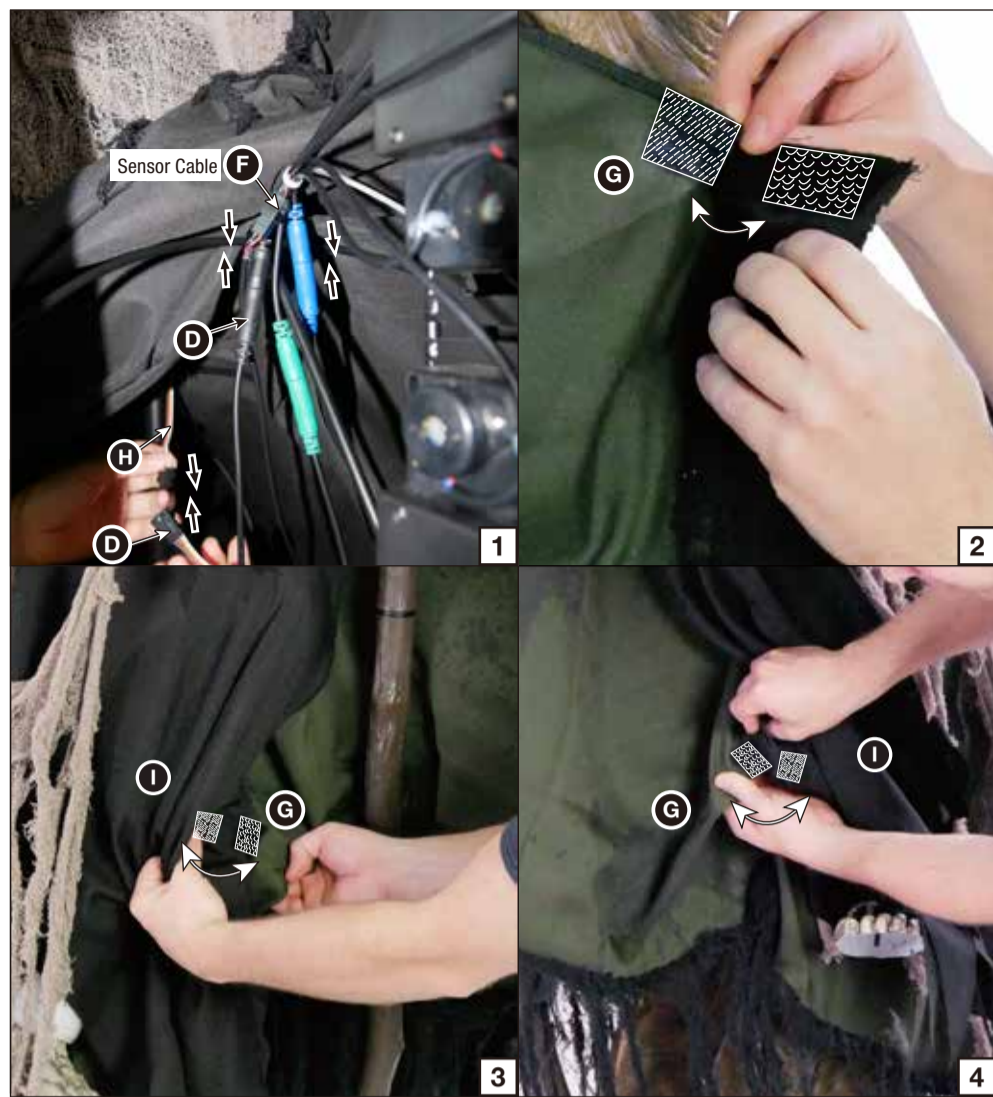
STEP 6

Slide the forked hook located on (Q) Right leg into the right "hip" slot housing on the (H) Torso Frame as shown in Figure 1.
 Slide the forked hook located on (R) Left leg into the left "hip" slot housing on the (H) Torso Frame as shown in Figure 2.
 Put the rope located on the (F) Horse Head through the (L) Left Arm and tie it as shown in Figure 3 & 4.



STEP 7

Set the (S) Head onto the (H) Torso Frame by sliding the forked hook into the "neck" slot housing on the (H) Torso Frame as shown in Figure 1.
 Connect the cables from the (S) Head to the color-coordinated cables on the (D) Body Frame as shown in Figure 2.
 Put the (I) Costume onto the (S) Head then secure to the (S) Head with the hook & loop closures as shown in Figure 3.
 Secure the back of the (I) Costume with the hook & loop closures as shown in Figure 4.



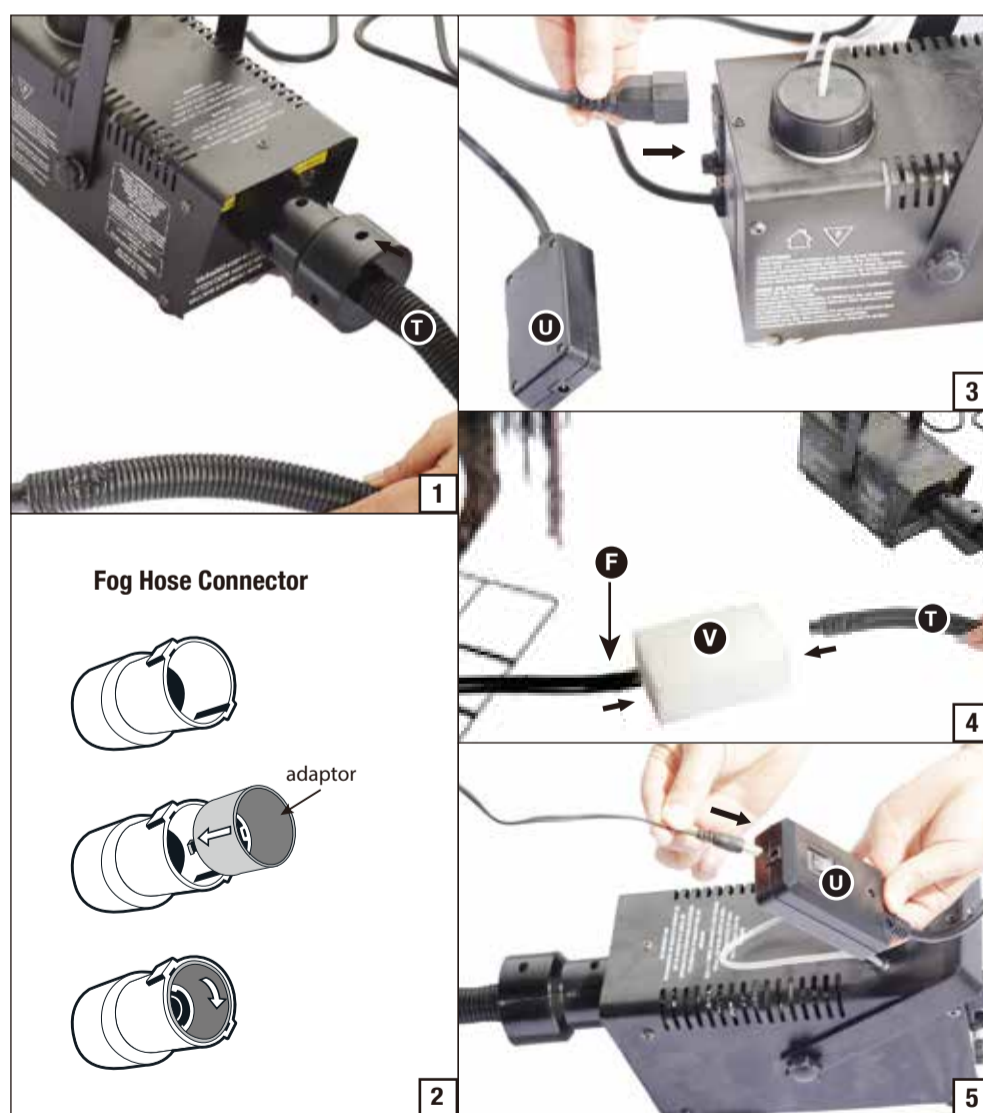
STEP 8

Connect the cable from the (H) Torso Frame to the cable on the (D) Body Frame, then connect the cable & sensor cable from the (F) Horse Head to the cables on the (D) Body Frame as shown in Figure 1.
 Secure the front of the (G) Cloak with the hook & loop closures as shown in Figure 2.
 Secure the left & right of the (G) Cloak to the (I) Costume with the hook & loop closures as shown in Figure 3 & 4.



STEP 9

Your Reaper's Ride is now fully assembled. Plug in and turn on to let the fun begin!



STEP 10

Attach the large end of the (T) Fog Hose onto the nozzle of the Fog Machine (Not Included) as shown in Figure 1.
NOTE: If the connector does not fit, remove the inner adapter ring and re-connect to the nozzle of Fog Machine as shown in Figure 2.
 Connect the (U) Fog Machine Adapter to the Fog Machine as shown in Figure 3.
 Connect the (F) Horse Head & the (T) Fog Hose and the (V) Moisture Trap Tank together as shown in Figure 4.
 Plug the cable from the Function Control Box located on the (D) Body Frame to the (U) Fog Machine Adapter as shown in Figure 5.

OPERATION INSTRUCTIONS:

1. Plug the power adapter into a standard power outlet and adjust the settings on the Function Control Box, located on the (D) Body Frame, as desired.

2. Settings:

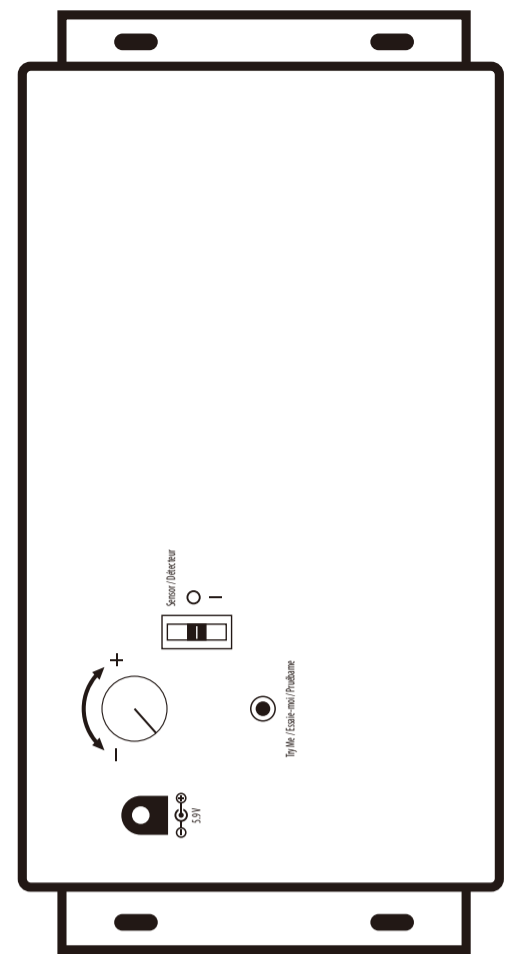
Sensor: This switch mode will activate lights, sound, and animation when the Infra-red (IR) sensor is activated and will operate for 1 audio-cycle with each activation. The Infra-red (IR) sensor has a range of up to 2 m/6.5 ft. and will activate when someone comes within an 80-degree angle from left-to-right, as well as from above and below.

O/OFF/Try Me: This switch mode allows the item to be activated only if triggered by using a Step Here Try Me Activation Pad (Included). The item will operate for one audio cycle with each Try Me activation. Refer to Assembly Instructions Step2 for further details.

I / ON : This switch mode will continuously operate the lights, sound, and animation of the item.

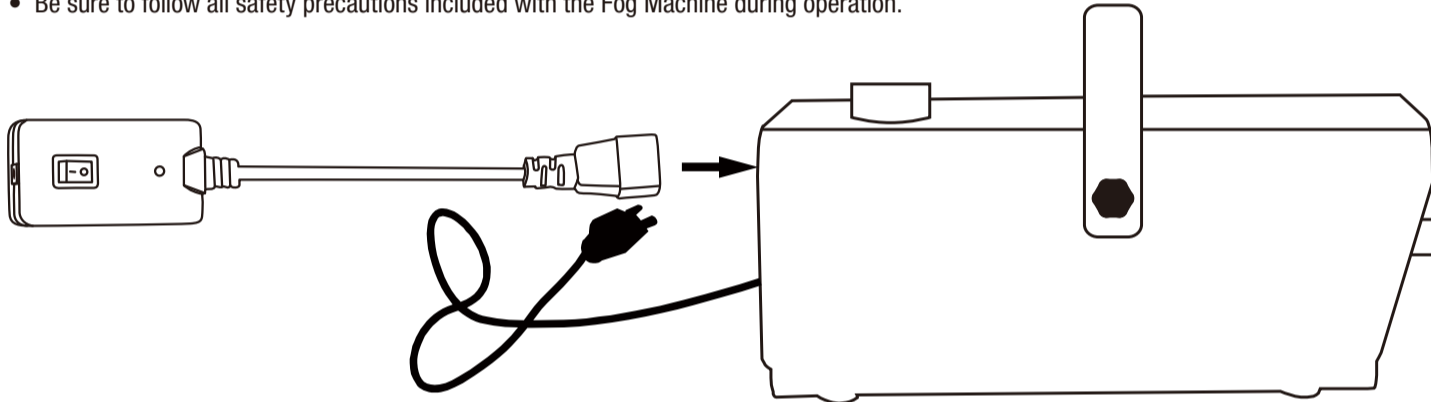


: Raise or lower the volume using the volume control turn dial, turn all the way down to turn the volume off.



FOG MACHINE ADAPTER INSTRUCTION:

- Use the (W) Fog Machine Adapter only with SVI 400 Watt Fog Machine (Not Included).
- Connect the 3-prong plug of the (W) Fog Machine Adapter into the jack at the back of the Fog Machine.
- Connect the power cord of the Fog Machine into a power outlet.
- Turn the power switch of the Fog Machine to the "ON" position.
- After the Fog Machine warms up (approx. 5 minutes), the light on the (W) Fog Machine Adapter will turn on.
- Press the "ON" switch, The fog machine will be ready to produce fog.
- Press the "OFF" switch, the fog machine will produce fog only when the Reaper Horse activates.
- Be sure to follow all safety precautions included with the Fog Machine during operation.



IMPORTANT SAFETY INSTRUCTIONS

Read Fog Machine instructions located in Fog Machine separated carton before operating.

Open the package and check for obvious damage during shipping. If found, discontinue use and contact the distributor.

This device complies with Part 15 of the FCC Rules. Operation is subject to the following two conditions: (1) This device may not cause harmful interference, and (2) this device must accept any interference received, including interference that may cause undesired operation.

CAUTION: Changes or modifications not expressly approved by the party responsible for compliance could void the user's authority to operate the equipment.

NOTE: This equipment has been tested and found to comply with the limits for a Class B digital device, pursuant to Part 15 of the FCC Rules. These limits are designed to provide reasonable protection against harmful interference in a residential installation. This equipment generates, uses and can radiate radio frequency energy and, if not installed and used in accordance with the instructions, may cause harmful interference to radio communications. However, there is no guarantee that interference will not occur in a particular installation. If this equipment does cause harmful interference to radio or television reception, which can be determined by turning the equipment off and on, the user is encouraged to try to correct the interference by one or more of the following measures: Reorient or relocate the receiving antenna, Increase the separation between the equipment and receiver, Connect the equipment into an outlet on a circuit different from that to which the receiver is connected. Consult the dealer or experienced radio/TV technician for help.