



# EASY ASSEMBLY AND OPERATION INSTRUCTIONS

MR-124650 Crouching Clown

**Please follow the step by step guide and enjoy your Crouching Clown!**

## CARE AND STORAGE INSTRUCTIONS

For best performance, operate your item indoors. When not in use, store this product in its original packing. Keep away from heat and moisture.

## WARNING

This item is not a toy and should be used for decoration only. This item contains small parts that can be a choking hazard. Keep all plastic and wire parts away from children.

1. Please use the adapter supplied by the manufacturer.
2. Please assemble the item according to the instructions. Connect all wires according to their matching color.
3. Children should be supervised by adults. The item should not be grabbed, as it becomes a tipping hazard. Keep away from the adapter, as it heats up during operation.

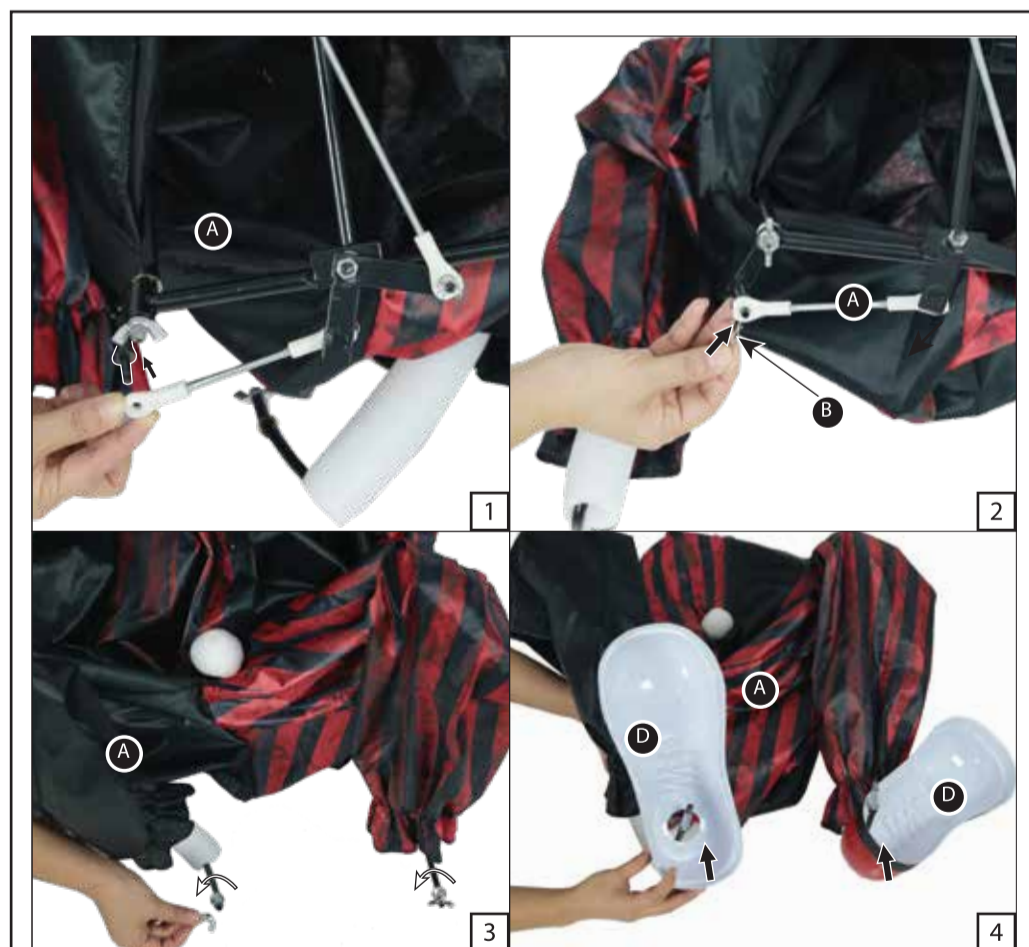
Please read all instructions carefully before assembling. Save this instruction sheet for future reference.

**PARTS LIST**

- A. Body with Torso Frame
- B. Pins x 8
- C. Base
- D. Shoes
- E. Shoulder Support
- F. Head
- G. Collar
- H. Step Pad
- I. Universal Adapter (Included)

Input: 100 - 240VAC 50/60Hz  
Output: 5.9V 3.0A

**BEFORE ASSEMBLING, REMOVE ALL THE ABOVE PARTS FROM BOX. IF ANY PART IS MISSING, PLEASE CONTACT CUSTOMER SERVICE AT SUPPORT@MORRISCOSTUMES.COM, OR BY PHONE 704-332-3304. IN YOUR EMAIL INQUIRY, PLEASE INCLUDE: YOUR ORDER NUMBER, WHO YOU BOUGHT IT FROM, AND WHAT SPECIFICALLY IS WRONG. THANK YOU.**



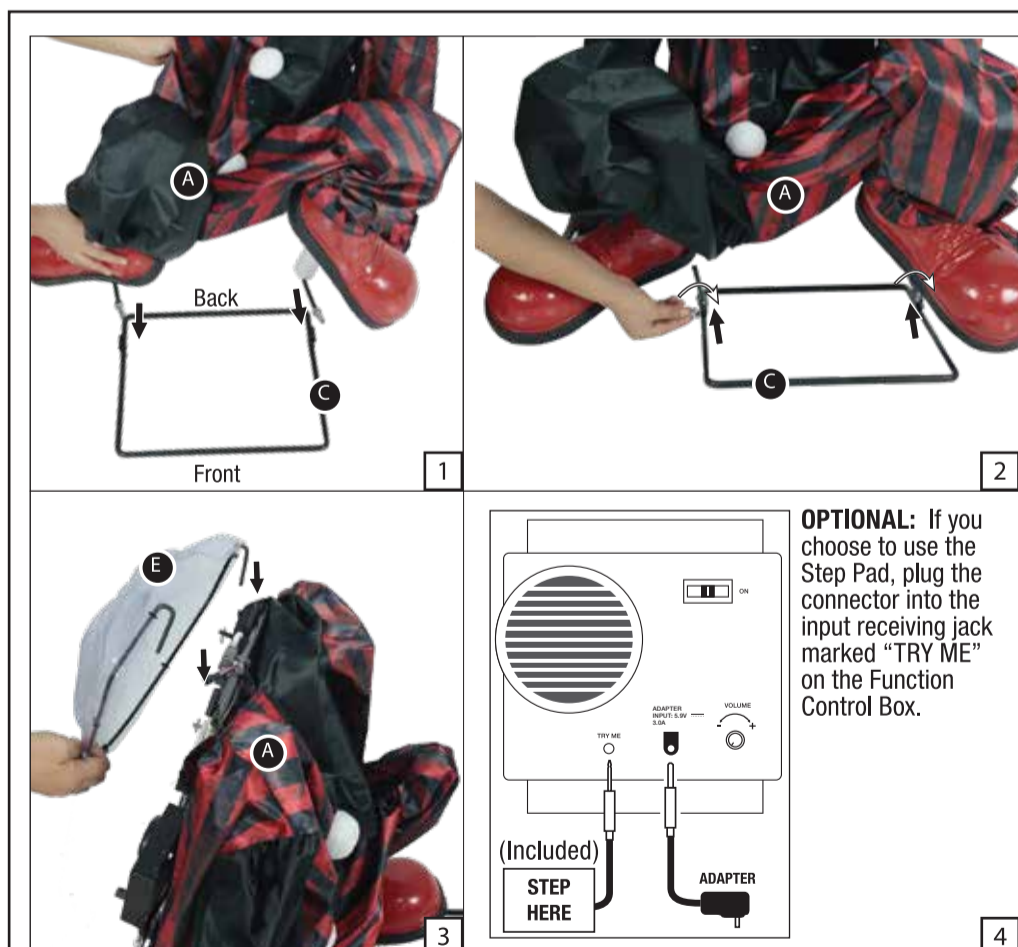
### STEP1

Attach the Connecting Rod available on the (A) Body with Torso Frame to the peg which is also available on the (A) Body with Torso Frame as shown in Figure 1.

Insert the (B) Pin into the hole located on the lower portion of the available peg on the (A) Body with Torso Frame and then bend the (B) Pin to fasten the Connecting Rod in place as shown in Figure 2.

Rotate the wing nuts counterclockwise which are located on the bottom of the (A) Body with Torso Frame until they come off as shown in Figure 3.

Slide the (D) Shoes up the legs of the (A) Body with Torso Frame as shown in Figure 4.



### STEP2

Insert the (A) Body with Torso Frame into the housings on the (C) Base as shown in Figure 1.

Rotate the wing nuts clockwise until tightened as shown in Figure 2.

Attach the (E) Shoulder Support to the (A) Body with Torso Frame by sliding the pegs available on the (E) Shoulder Support into the housings on the top of the (A) Body with Torso Frame as shown in Figure 3.

Now, plug the Adapter into the input receiving jack marked "DC 5.9V" on the Function Control Box.

**OPTIONAL:** If you choose to use the Step Pad, plug the connector into the input receiving jack marked "TRY ME" on the Function Control Box.



### STEP3

- Set the (F) Head onto the (A) Body with Torso Frame by sliding the forked hook into the "neck" slot housing on the (A) Body with Torso Frame as shown in Figure 1.
- Connect the cable from the (F) Head to the corresponding cable from the Function Control Box located on the (A) Body with Torso Frame as shown in Figure 2.
- Secure the back of the (A) Body with Torso Frame with the hook & loop closures as shown in Figure 3.
- Attach the (G) Collar to the (F) Head and secure with the hook & loop closures as shown in Figure 4.



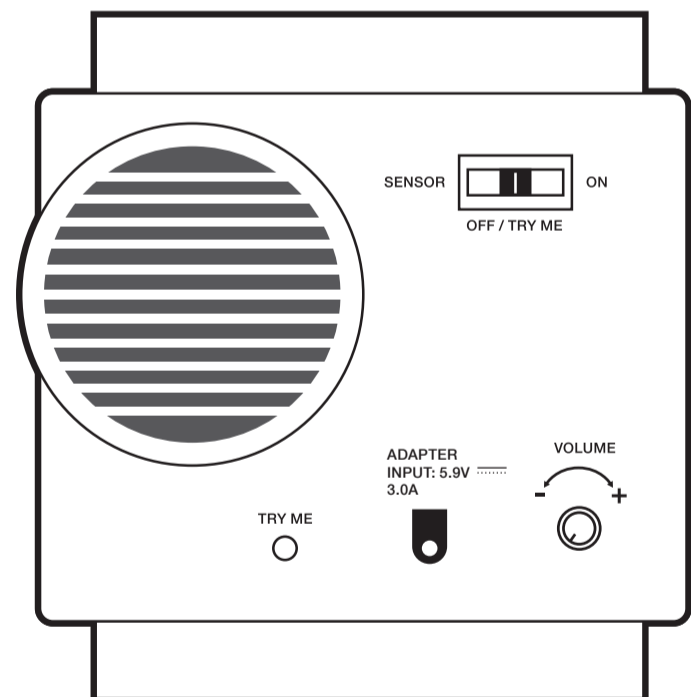
### STEP4

- Secure the back of the (G) Collar with the hook & loop closures as shown in Figure 1.
  - Slide the peg available on the right arm of the (A) Body with Torso Frame into the housing available on the right thigh of the (A) Body with Torso Frame as shown in Figure 2.
  - Insert the (B) Pin into the hole located on the right leg of the available peg on the (A) Body with Torso Frame and then bend the (B) Pin to fasten in place as shown in Figure 3.
  - Slide the peg available on the left arm of the (A) Body with Torso Frame into the housing available on the left thigh of the (A) Body with Torso Frame as shown in Figure 4.
  - Insert the (B) Pin into the hole located on the left leg of the available peg on the (A) Body with Torso Frame and then bend the (B) Pin to fasten in place as shown in Figure 5.
- Your Crouching Clown is now fully assembled. Plug in and turn on to let the fun begin!

### OPERATION INSTRUCTIONS:

1. Plug the power adapter into a standard power outlet and adjust the settings on the Function Control Box, located on the Body with Torso Frame, as desired.
2. Settings:
  - On: This setting allows the item to run continuously.
  - Off/Try-Me: This switch mode allows the item to be activated only if triggered by using a Step Here Try Me Activation Pad. The item will operate for one audio cycle with each Try-Me activation. Refer to Assembly Instructions Step 2 for further details.
  - Sensor: This switch mode will activate lights, sound, and animation when the Infra-red (IR) sensor is activated and will operate for 1 audio-cycle with each activation. The Infra-red (IR) sensor has a range of up to 2 m/6.5 ft. and will activate when someone comes within an 80-degree angle from left-to-right, as well as from above and below.

: Raise or lower the volume using the volume control turn dial, turn all the way down to turn the volume off.



This device complies with Part 15 of the FCC Rules. Operation is subject to the following two conditions: (1) This device may not cause harmful interference, and (2) this device must accept any interference received, including interference that may cause undesired operation.

**CAUTION:** Changes or modifications not expressly approved by the party responsible for compliance could void the user's authority to operate the equipment.

**NOTE:** This equipment has been tested and found to comply with the limits for a Class B digital device, pursuant to Part 15 of the FCC Rules. These limits are designed to provide reasonable protection against harmful interference in a residential installation. This equipment generates, uses, and can radiate radio frequency energy and, if not installed and used in accordance with the instructions, may cause harmful interference to radio communications. However, there is no guarantee that interference will not occur in a particular installation. If this equipment does cause harmful interference to radio or television reception, which can be determined by turning the equipment off and on, the user is encouraged to try to correct the interference by one or more of the following measures: Reorient or relocate the receiving antenna. Increase the separation between the equipment and receiver. Connect the equipment into an outlet on a circuit different from that to which the receiver is connected. Consult the dealer or experienced radio/TV technician for help.