

EASY ASSEMBLY AND OPERATION INSTRUCTIONS

5124633 Winter Forest Dragon



This item, when assembled by the following instructions, should take 15 minutes to assemble. Please follow the step by step guide and enjoy your Winter Dragon!

CARE AND STORAGE INSTRUCTIONS

For best performance, operate your item indoors. When not in use, store this product in its original packing. Keep away from heat and moisture.

WARNING

This item is not a toy and should be used for decoration only. This item contains small parts that can be a hazard. Keep all plastic and wire parts away from children.

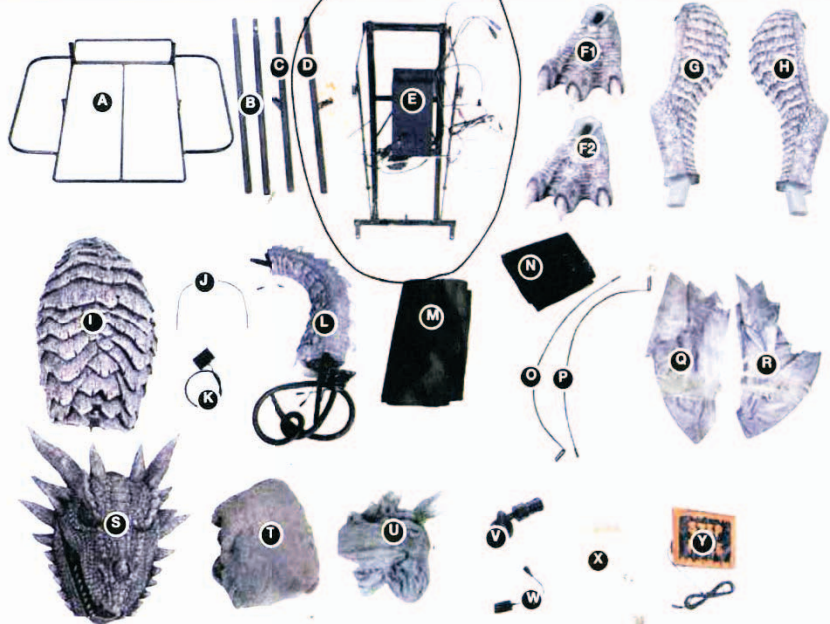
1. Please use the adapter supplied by the manufacturer.
2. Please assemble the item according to the instructions. Connect all wires according to their matching color.
3. Children should be supervised by adults. The item should not be grabbed, as it becomes a tipping hazard. Keep away from the adapter, as it heats up during operation.

Please read all instructions carefully before assembling. Save this instruction sheet for future reference.

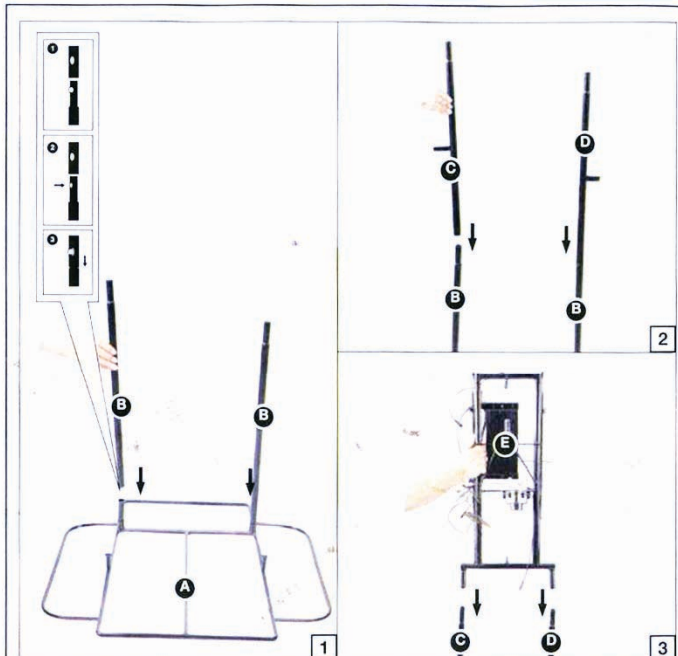
PARTS LIST

- A. Base
- B. Lower Support Poles x 2
- C. Right Leg Pole
- D. Left Leg Pole
- E. Torso Frame
- F1. Right Foot
- F2. Left Foot
- G. Right Leg
- H. Left Leg
- I. Chest
- J. Hip Hoop
- K. Sensor
- L. Neck
- M. Cloak
- N. Curtain
- O. Right Wing Brace
- P. Left Wing Brace
- Q. Right Wing
- R. Left Wing
- S. Head
- T. Body Shroud
- U. Wing Shroud
- V. Fog Hose
- W. Fog Machine Adapter
- X. Moisture Trap Tank
- Y. Step Pad

AC Adapter
Input: 100 - 240VAC 50/60Hz
Output: 5.9V 2A

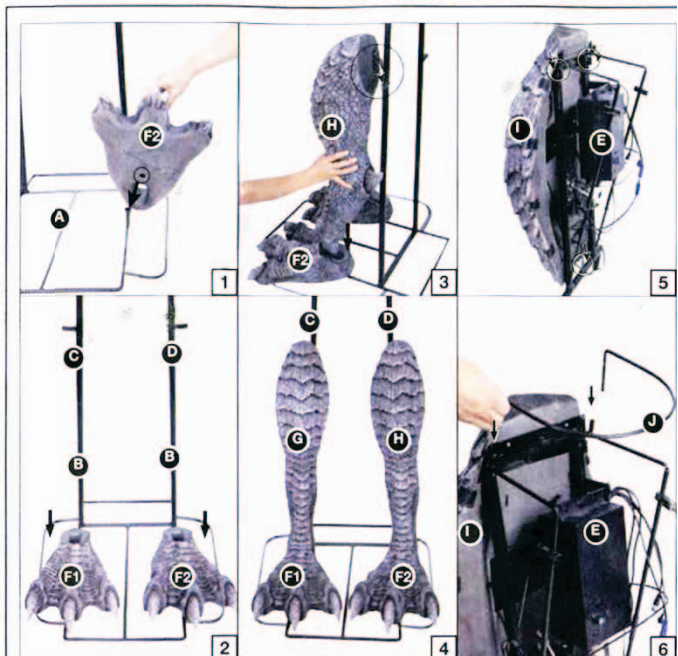


BEFORE ASSEMBLING, REMOVE ALL THE ABOVE PARTS FROM BOX. IF ANY PART IS MISSING, DO NOT ATTEMPT TO ASSEMBLE THE PRODUCT AND CONTACT CUSTOMER SERVICE FROM 8:30AM TO 5:30PM PST AT 1-855-428-3921.



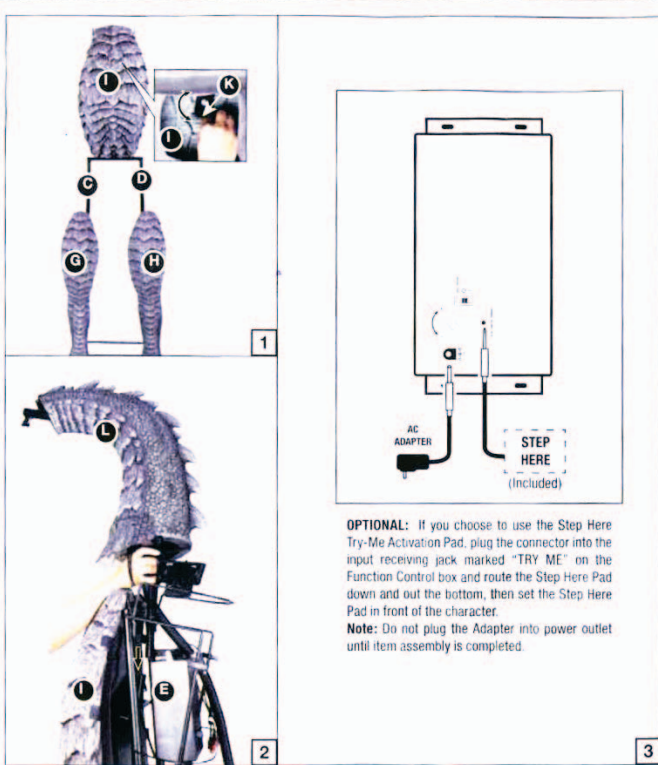
STEP1

Note: The posts located on the (A) Base angle towards the front.
Attach the (B) Lower Support Poles to the (A) Base as shown and secure by aligning the quick-connect push buttons into the pre-drilled holes as shown in Figure 1.
Lower the (C) & (D) Leg poles onto the (B) Lower Support Poles and secure by aligning the quick-connect push buttons into the pre-drilled holes as shown in Figure 2.
Lower the (E) Torso Frame to and secure by aligning the quick-connect push buttons into the pre-drilled holes as shown in Figure 3.



STEP2

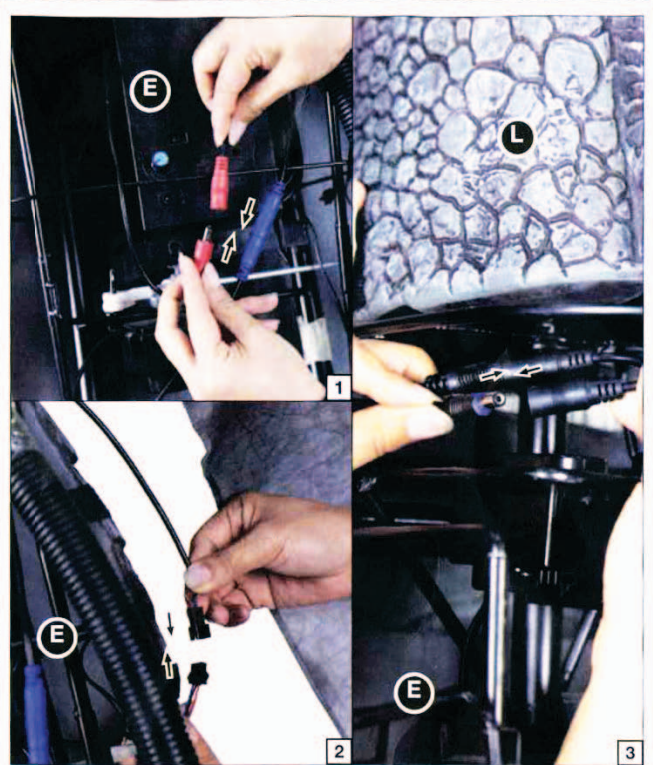
Lower the (F1) Right Foot & (F2) Left Foot through the strip located on the (A) Base as shown in Figure 1 & 2.
Set the (G) & (H) Legs through the holes located on the (C) & (D) Leg poles and attach them to the (F1) Right Foot & (F2) Left Foot as shown in Figure 3 & 4.
Set the (I) Chest through the holes located on the (E) Torso Frame as shown in Figure 5.
Set the (J) Hip Hoop through the holes located on the (E) Torso Frame as shown in Figure 6.



OPTIONAL: If you choose to use the Step Here Try-Me Activation Pad, plug the connector into the input receiving jack marked "TRY ME" on the Function Control box and route the Step Here Pad down and out the bottom, then set the Step Here Pad in front of the character.
Note: Do not plug the Adapter into power outlet until item assembly is completed.

STEP3

Attach the (K) Sensor to the (I) Chest as shown in Figure 1.
 Assemble the (L) Neck to the (E) Torso Frame and secure by aligning the quick-connect push button into the pre-drilled hole as shown in Figure 2.
 Now, plug the Adapter into the input receiving jack marked "DC 5.9V" on the Function Control Box.
 Note: You can remove the fog hose located on the (L) Neck when you do not need the fog effect.



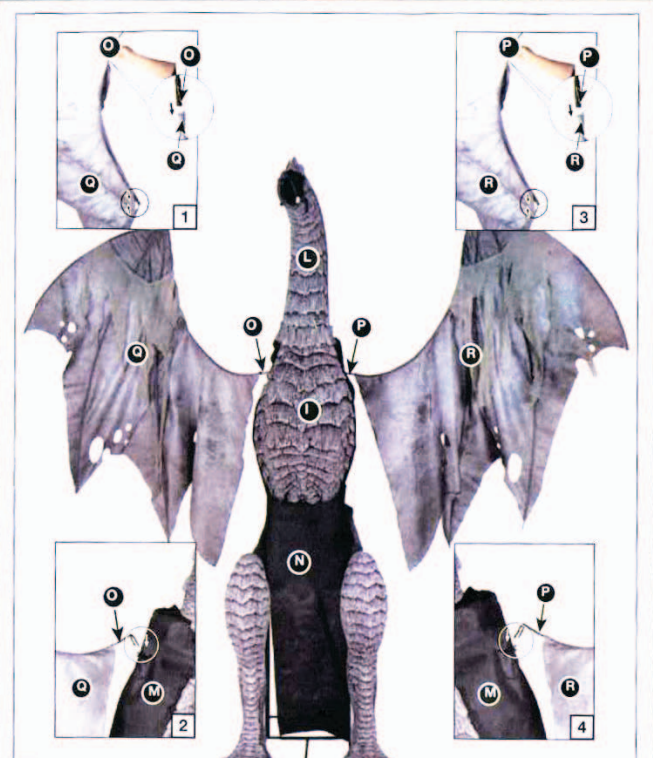
STEP4

Connect the cables from the (L) Neck to the corresponding cable from the Function Control Box located on the (E) Torso Frame as shown in Figure 1 & 3.
 Connect the cable from the (K) Sensor to the corresponding cable from the Function Control Box located on the (E) Torso Frame as shown in Figure 2.



STEP5

Drape the (M) Cloak over the ring located on the (E) Torso Frame as shown in Figure 1.
 Secure the (I) Chest and (M) Cloak with the hook & loop closures as shown in Figure 2.
 Attach the (N) Curtain to the (I) Chest and secure with the hook & loop closures as shown in Figure 3.
 Secure the (M) Cloak and (N) Curtain with the hook & loop closures as shown in Figure 4.



STEP6

Insert the (O) Right Wing Brace into the (Q) Right Wing up to the hole and then slide the pole from the (Q) Right Wing into the pole housing available on the (O) Right Wing Brace as shown in Figure 1.
 Slide the forked hook located on the (O) Right Wing Brace into the right "shoulder" slot housing on the (E) Torso Frame and (M) Cloak as shown in Figure 2.
 Insert the (P) Left Wing Brace into the (R) Left Wing up to the hole and then slide the pole from the (R) Left Wing into the pole housing available on the (P) Left Wing Brace as shown in Figure 3.
 Slide the forked hook located on the (P) Left Wing Brace into the right "shoulder" slot housing on the (E) Torso Frame and (M) Cloak as shown in Figure 4.



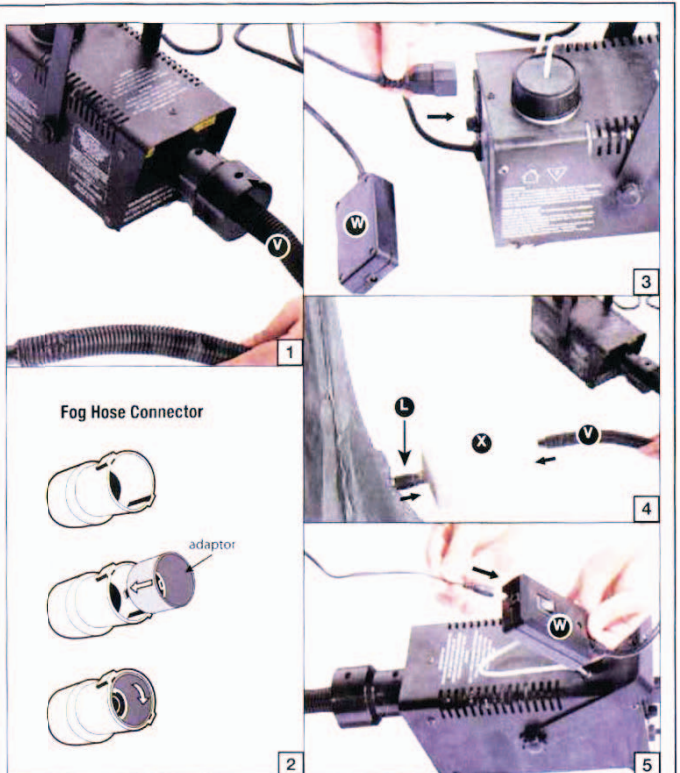
STEP7
 Connect the cables from the (L) Neck to the corresponding cable from the (S) Head as shown in Figure 1.
 Connect the fog hose located on the (S) Head to the fog hose located on the (L) Neck by sliding the forked hook into the slot housing on the (L) Neck as shown in Figure 2.



STEP8
 Attach the (T) Body Shroud to the (I) Chest and secure with the hook & loop closures as shown in Figure 1.
 Drape the (T) Body Shroud over the (Q) & (R) Wings and wrap the (T) Body Shroud around the ring located on the (E) Torso Frame as shown in Figure 2 & 3.



STEP9
 Drape the (U) Wing Shroud to the (Q) & (R) Wings as shown in Figure 1.
 Now, the Winter Dragon construction is finished as shown. Proceed to the next step for the addition of the Fog Machine.



STEP10
 Attach the large end of the (V) Fog Hose onto the nozzle of the Fog Machine (Not Included) as shown in Figure 1.
NOTE: If the connector does not fit, remove the inner adapter ring and re-connect to the nozzle of Fog Machine as shown in Figure 2.
 Connect the (W) Fog Machine Adapter to the Fog Machine as shown in Figure 3.
 Connect the (L) Neck & the (V) Fog Hose and the (X) Moisture Trap Tank together as shown in Figure 4.
 Plug the cable from the Function Control Box located on the (E) Torso Frame to the (W) Fog Machine Adapter as shown in Figure 5.

OPERATION INSTRUCTIONS:

1. Plug the Adapter into a standard power outlet and adjust the settings on the Function Control Box as desired.

2. Settings:

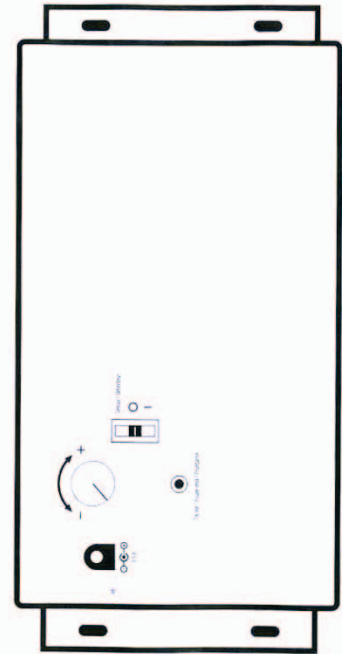
Sensor: This switch mode will activate lights, sound, and animation when the Infra-red (IR) sensor is activated and will operate for 1 audio-cycle with each activation. The Infra-red (IR) sensor has a range of up to 2 m/6.5 ft. and will activate when someone comes within an 80-degree angle from left-to-right, as well as from above and below.

O/OFF/Try Me: This switch mode allows the item to be activated only if triggered by using a Step Here Try Me Activation Pad. The item will operate for one audio cycle with each Try Me activation. Refer to Assembly Instructions Step3 for further details.

I / ON : This switch mode will continuously operate the lights, sound, and animation of the item.

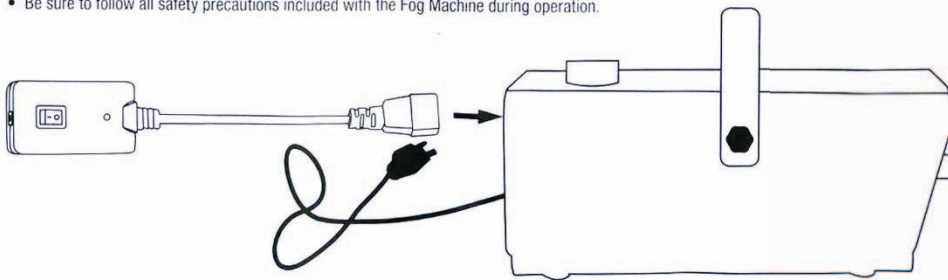


: Raise or lower the volume using the volume control turn dial, turn and click all the way down to turn the volume off.



FOG MACHINE ADAPTER INSTRUCTION:

- Use the (W) Fog Machine Adapter only with SVI 400 Watt Fog Machine (Not Included).
- Connect the 3-prong plug of the (W) Fog Machine Adapter into the jack at the back of the Fog Machine.
- Connect the power cord of the Fog Machine into a power outlet.
- Turn the power switch of the Fog Machine to the "ON" position.
- After the Fog Machine warms up (approx. 5 minutes), the light on the (W) Fog Machine Adapter will turn on.
- Press the "ON" switch. The fog machine will be ready to produce fog.
- Press the "OFF" switch, the fog machine will produce fog only when the switch activates.
- Be sure to follow all safety precautions included with the Fog Machine during operation.



IMPORTANT SAFETY INSTRUCTIONS

This device complies with Part 15 of the FCC Rules. Operation is subject to the following two conditions: (1) This device may not cause harmful interference, and (2) this device must accept any interference received, including interference that may cause undesired operation.

CAUTION: Changes or modifications not expressly approved by the party responsible for compliance could void the user's authority to operate the equipment.

NOTE: This equipment has been tested and found to comply with the limits for a Class B digital device, pursuant to Part 15 of the FCC Rules. These limits are designed to provide reasonable protection against harmful interference in a residential installation. This equipment generates, uses and can radiate radio frequency energy and, if not installed and used in accordance with the instructions, may cause harmful interference to radio communications. However, there is no guarantee that interference will not occur in a particular installation. If this equipment does cause harmful interference to radio or television reception, which can be determined by turning the equipment off and on, the user is encouraged to try to correct the interference by one or more of the following measures: Reorient or relocate the receiving antenna, increase the separation between the equipment and receiver, connect the equipment into an outlet on a circuit different from that to which the receiver is connected. Consult the dealer or experienced radio/TV technician for help.