

EASY ASSEMBLY AND OPERATION INSTRUCTIONS

MR-124622 Cagey the Clown with Kid

Please follow the step by step guide and enjoy your Cagey the Clown with Kid!

CARE AND STORAGE INSTRUCTIONS

For best performance operate your item indoors. When not in use, store this product in its original packing. Keep away from heat and moisture.

WARNING

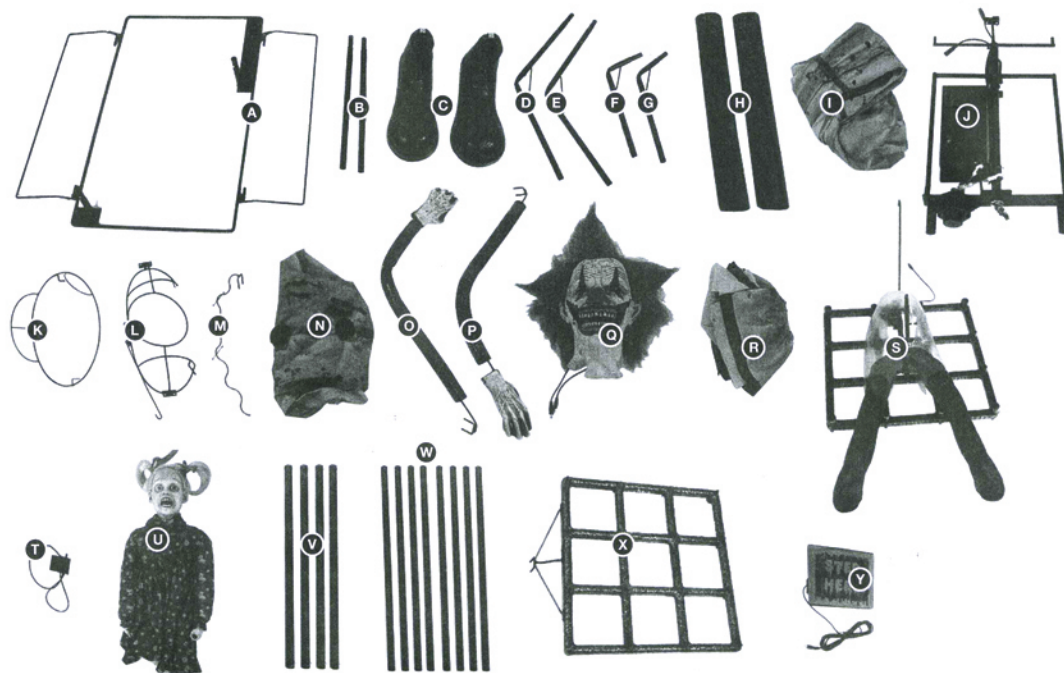
This item is not a toy and should be used for decoration only. This item contains small parts that can be a choking hazard. Keep all plastic and wire parts away from children.

1. Please use the adapter supplied by manufacturer.
2. Please assemble item according to instructions. Connect all wires according to matching color.
3. Children should be supervised by adults. Item should not be grabbed, as it becomes a tipping hazard. Keep all away from the adapter, as it heats up during operation.

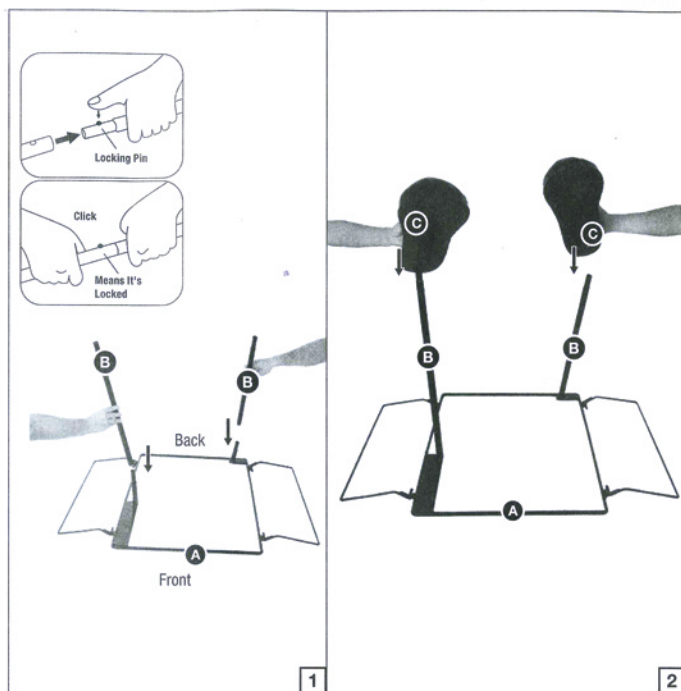
Please read all instructions carefully before assembling. Save this instruction sheet for future reference.

PARTS LIST

- A. Base
 - B. Lower Support Poles x 2
 - C. Shoes
 - D. Right Knee Pole
 - E. Left Knee Pole
 - F. Right Hip Pole
 - G. Left Hip Pole
 - H. Foam Tubes x 2
 - I. Pants
 - J. Torso Frame
 - K. Hip Hoop
 - L. Shoulder Support
 - M. Spinal Pole
 - N. Costume
 - O. Right Arm
 - P. Left Arm
 - Q. Head
 - R. Collar
 - S. Lower Cage Cover
 - T. Sensor
 - U. Kid
 - V. Cage Stick x 4
 - W. Cage Stick-1 x 8
 - X. Upper Cage Cover
 - Y. Step Pad
 - Z. Adapter (Included)
- Input: 100 - 240VAC 50/60Hz
Output: 5.9V 2A

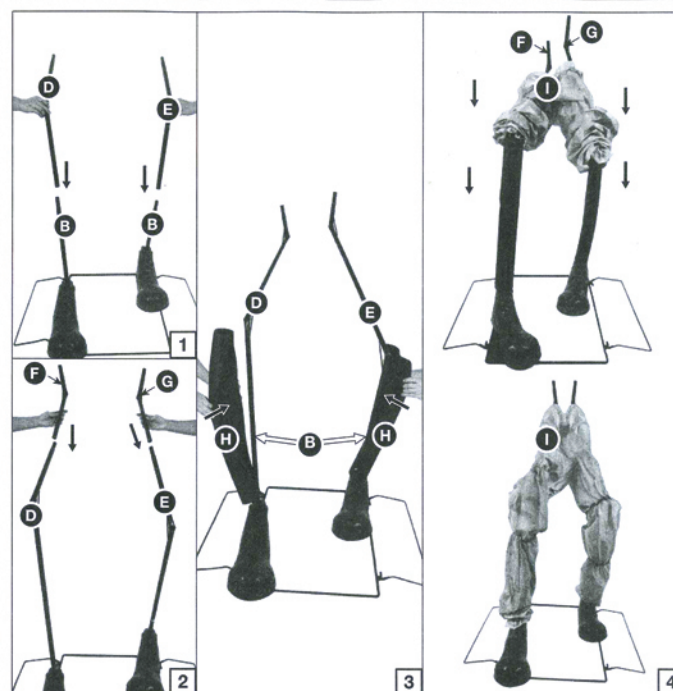


BEFORE ASSEMBLING, REMOVE ALL THE ABOVE PARTS FROM BOX. IF ANY PART IS MISSING, PLEASE CONTACT CUSTOMER SERVICE AT SUPPORT@MORRISCOSTUMES.COM, OR BY PHONE 704-332-3304. IN YOUR EMAIL INQUIRY, PLEASE INCLUDE: YOUR ORDER NUMBER, WHO YOU BOUGHT IT FROM, AND WHAT SPECIFICALLY IS WRONG. THANK YOU.



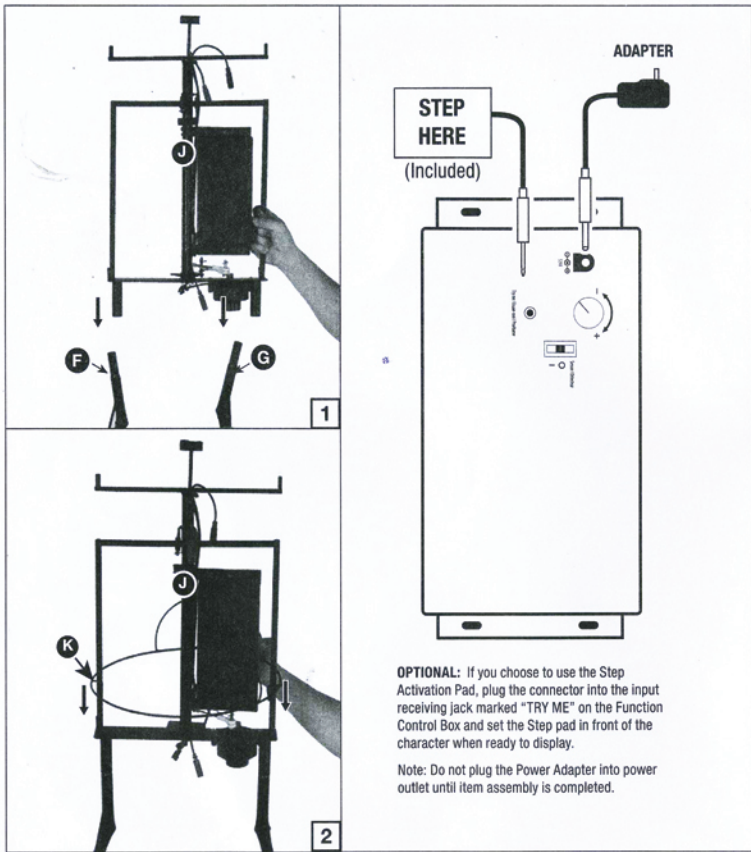
STEP 1

Attach the (B) Lower Support Poles to the (A) Base as shown and secure by aligning the quick-connect push buttons into the pre-drilled holes as shown in Figure 1.
Lower (C) Shoes over the (B) Lower Support Poles as shown in Figure 2.



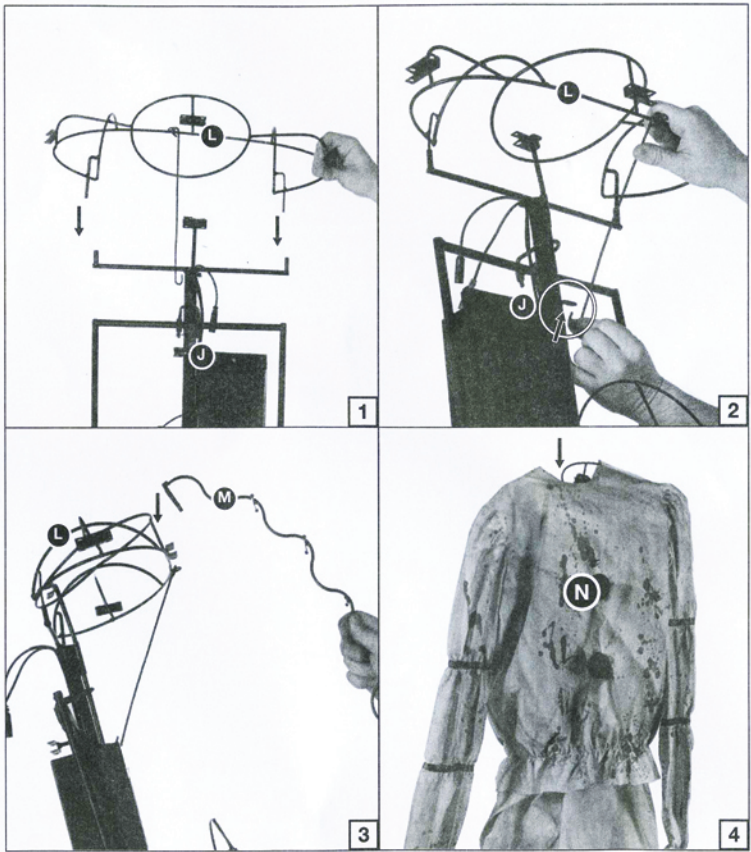
STEP 2

Attach the (D) & (E) Knee Poles to the (B) Lower Support Poles and secure by aligning the quick connect push buttons into the pre-drilled holes as shown in Figure 1.
Attach the (F) & (G) Hip Poles to the (D) & (E) Knee Poles and secure by aligning the quick connect push buttons into the pre-drilled holes as shown in Figure 2.
Wrap the (B) Lower Support poles and (D) & (E) Knee Poles with the (H) Foam Tubes as shown in Figure 3.
Lower the (I) Pants over the assembled support poles as shown in Figure 4.



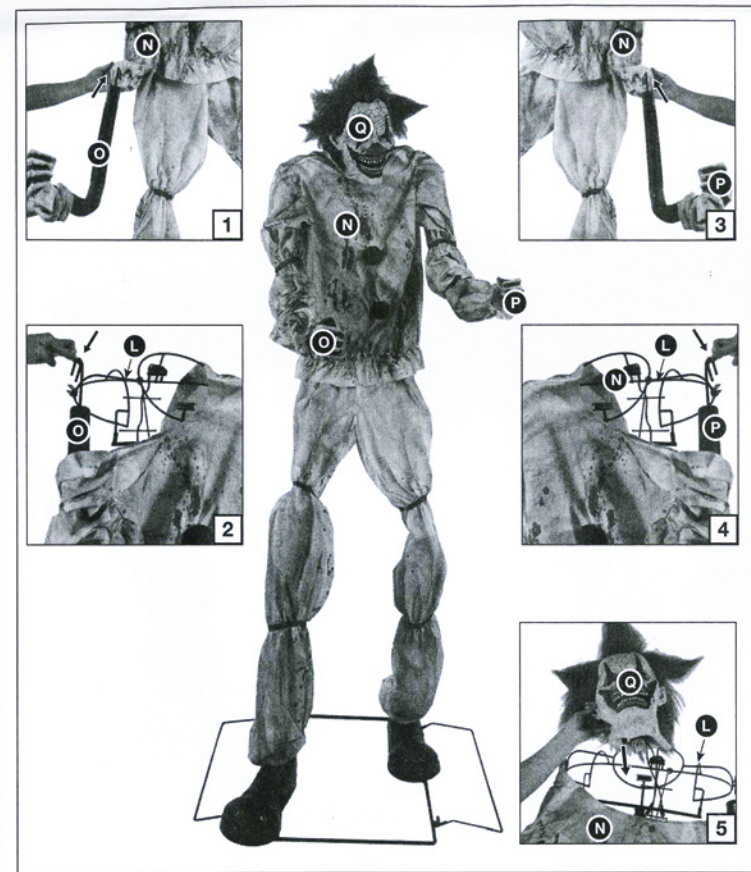
STEP 3

NOTE: The speaker on the Function Control Box located on the (J) Torso Frame should be facing front. Assemble the (J) Torso Frame onto the (F) & (G) Hip Poles and secure by aligning the quick-connect push buttons into the pre-drilled holes as shown in Figure 1. Lower the (K) Hip Hoop down over the (J) Torso Frame and attach through the slots located on the bottom of the (J) Torso Frame as shown in Figure 2. Now, plug the Adapter into the input receiving jack marked "DC 5.9V" on the Function Control Box and route the Power Adapter down and out the bottom of the item.



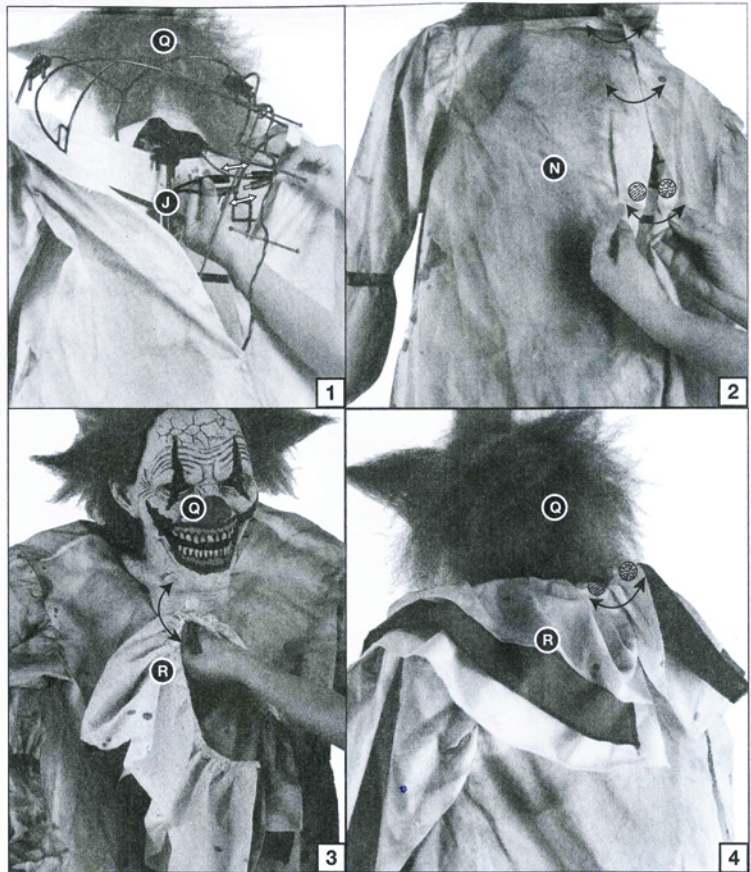
STEP 4

Attach the (L) Shoulder Support into the slots located on the top of the (J) Torso Frame as shown in Figure 1. Set the hook attached on the (L) Shoulder Frame on the ring located on the middle of the (J) Torso Frame as shown in Figure 2. Attach the (M) Spinal Pole onto the (L) Shoulder Support by sliding the forked hook into the slot housing at the back of the (L) Shoulder Support as shown in Figure 3. Lower the (N) Costume down over the (L) Shoulder Support & (J) Torso Frame as shown in Figure 4.



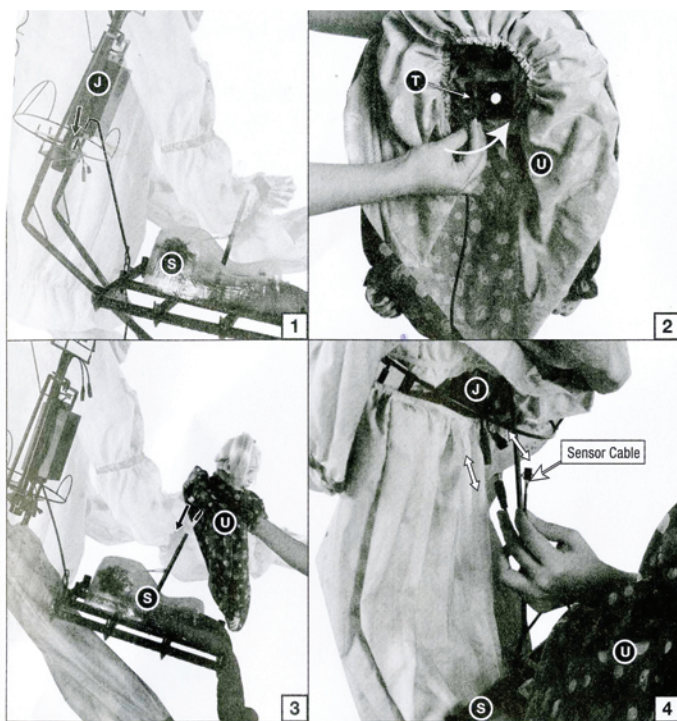
STEP 5

Slide the (O) Right Arm up through the right sleeve and slide the forked hook into the right "shoulder" slot housing on the (L) Shoulder Frame as shown in Figure 1 & 2. Slide the (P) Left Arm up through the left sleeve and slide the forked hook into the left "shoulder" slot housing on the (L) Shoulder Frame as shown in Figure 3 & 4. Set the (Q) Head onto (J) Torso Frame by sliding the forked hook into the "neck" slot housing on the (J) Torso Frame as shown in Figure 5.



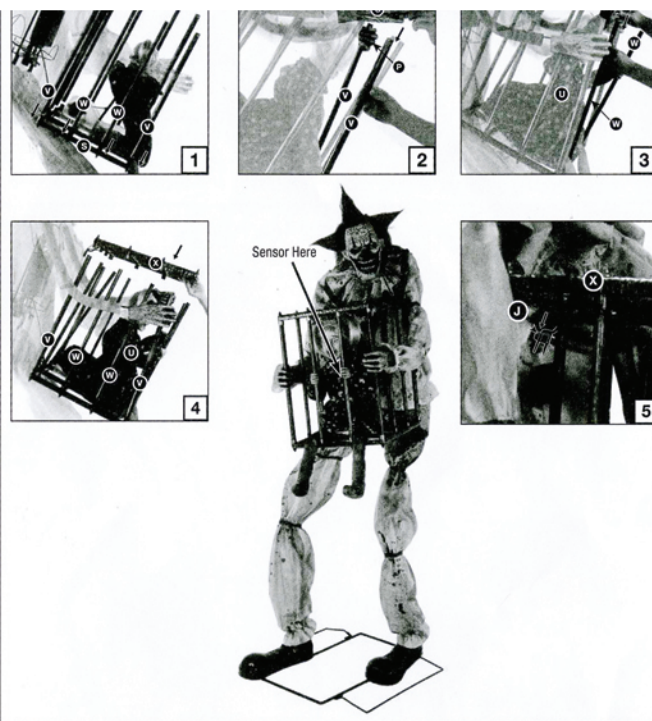
STEP 6

Connect the cable from the (Q) Head to the color-coordinated cables on the (J) Torso Frame as shown in Figure 1. Secure the back of the (N) Costume with the hook & loop closures as shown in Figure 2. Attach the (R) Collar to the (Q) Head and secure with the hook & loop closures as shown in Figure 3. Attach the (U) Sensor to the (V) Clown Costume as shown in Figure 4. Secure the back of the (R) Collar with the hook & loop closures as shown in Figure 4.



STEP 7

Attach the (S) Lower Cage Cover to the (J) Torso Frame and slide the forked hook into the slot housing on the (J) Torso Frame as shown in Figure 1.
 Attach the (T) Sensor to the (U) Kid as shown in Figure 2.
 Attach the (U) Kid to the (S) Lower Cage Cover as shown and secure by aligning the quick-connect push button into the pre-drilled hole as shown in Figure 3.
 Connect the cable from the (U) Kid to the color-coordinated cable on the (J) Torso Frame and then connect the sensor cable from the (S) Lower Cage Cover to the (J) Torso Frame as shown in Figure 4.



STEP 8

Attached the (V) Cage Sticks & (W) Cage Sticks-1 onto the (S) Lower Cage Cover as shown in Figure 1.
 Thread the (V) Cage Sticks through the hands located on the (O) Right Arm and the (P) Left Arm as shown in Figure 2.
 Through the front two (W) Cage Sticks-1 over the hand located on the (U) Kid as shown in Figure 3.
 Attach the (X) Upper Cage Cover to the assembled Cage Sticks as shown in Figure 4.
 Attach the (X) Upper Cage Cover to the (J) Torso Frame as shown in Figure 5.
 Your Coney the Clown with Kid is now fully assembled. Plug in and turn on to let the fun begin!

OPERATION INSTRUCTIONS:

1. Plug the power adapter into a standard power outlet and adjust the settings on the Function Control Box, located on the Torso Frame, as desired.

2. Settings:

Sensor: This switch mode will activate lights, sound, and animation when the Infra-red (IR) sensor is activated and will operate for 1 audio-cycle with each activation. The Infra-red (IR) sensor has a range of up to 2 m/6.5 ft. and will activate when someone comes within an 80-degree angle from left-to-right, as well as from above and below.

○ / OFF / Try Me: This switch mode allows the item to be activated only if triggered by using a Step Here Try Me Activation Pad (Not Included). The item will operate for one audio cycle with each Try Me activation. Refer to Assembly Instructions Step3 for further details.

I / ON : This switch mode will continuously operate the lights, sound, and animation of the item.

⌚ + : Raise or lower the volume using the volume control turn dial, turn all the way down to turn the volume off.

This device complies with Part 15 of the FCC Rules. Operation is subject to the following two conditions: (1) This device may not cause harmful interference, and (2) this device must accept any interference received, including interference that may cause undesired operation.

CAUTION: Changes or modifications not expressly approved by the party responsible for compliance could void the user's authority to operate the equipment.

NOTE: This equipment has been tested and found to comply with the limits for a Class B digital device, pursuant to Part 15 of the FCC Rules. These limits are designed to provide reasonable protection against harmful interference in a residential installation. This equipment generates, uses, and can radiate radio frequency energy and, if not installed and used in accordance with the instructions, may cause harmful interference to radio communications. However, there is no guarantee that interference will not occur in a particular installation. If this equipment does cause harmful interference to radio or television reception, which can be determined by turning the equipment off and on, the user is encouraged to try to correct the interference by one or more of the following measures: Reorient or relocate the receiving antenna, Increase the separation between the equipment and receiver, Connect the equipment into an outlet on a circuit different from that to which the receiver is connected. Consult the dealer or experienced radio/TV technician for help.

