

EASY ASSEMBLY AND OPERATION INSTRUCTIONS

5124528 Crouching Bones

This item, when assembled by the following instructions, should take 15 minutes to assemble. Please follow the step by step guide and enjoy your Crouching Bones!

CARE AND STORAGE INSTRUCTIONS

For best performance, operate your item indoors. When not in use, store this product in its original packing. Keep away from heat and moisture.

WARNING

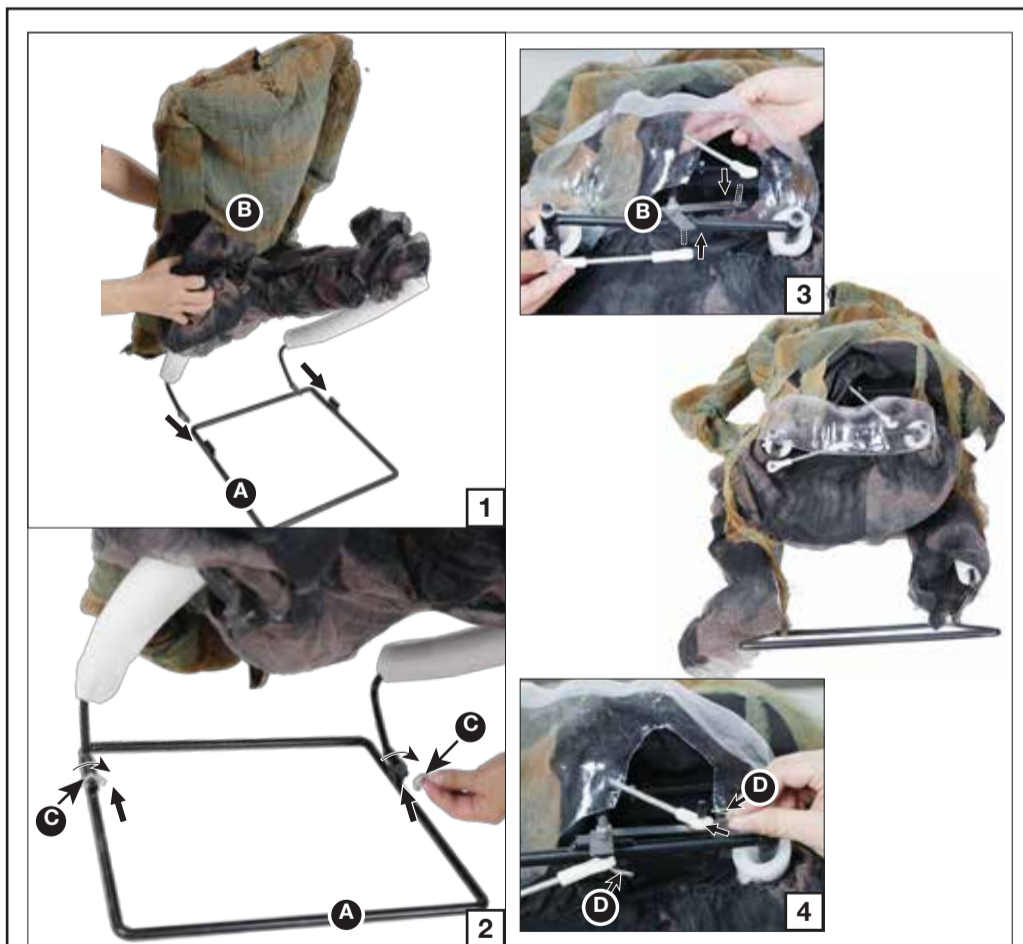
This item is not a toy and should be used for decoration only. This item contains small parts that can be a choking hazard. Keep all plastic and wire parts away from children.

1. Please use the adapter supplied by the manufacturer.
2. Please assemble the item according to the instructions. Connect all wires according to their matching color.
3. Children should be supervised by adults. The item should not be grabbed, as it becomes a tipping hazard. Keep away from the adapter, as it heats up during operation.

Please read all instructions carefully before assembling. Save this instruction sheet for future reference.

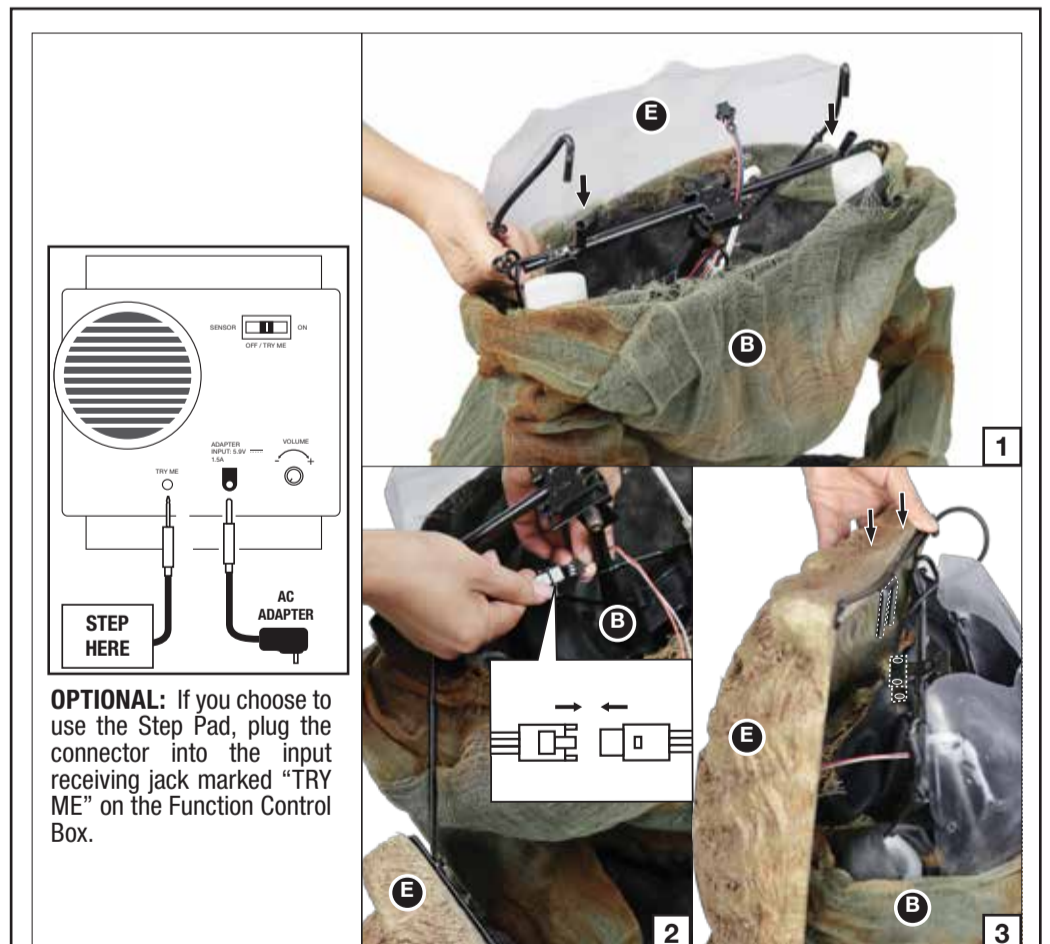


BEFORE ASSEMBLING, REMOVE ALL THE ABOVE PARTS FROM BOX. IF ANY PART IS MISSING, DO NOT ATTEMPT TO ASSEMBLE THE PRODUCT AND CONTACT CUSTOMER SERVICE FROM 8:30AM TO 5:30PM PST AT 1-855-428-3921.



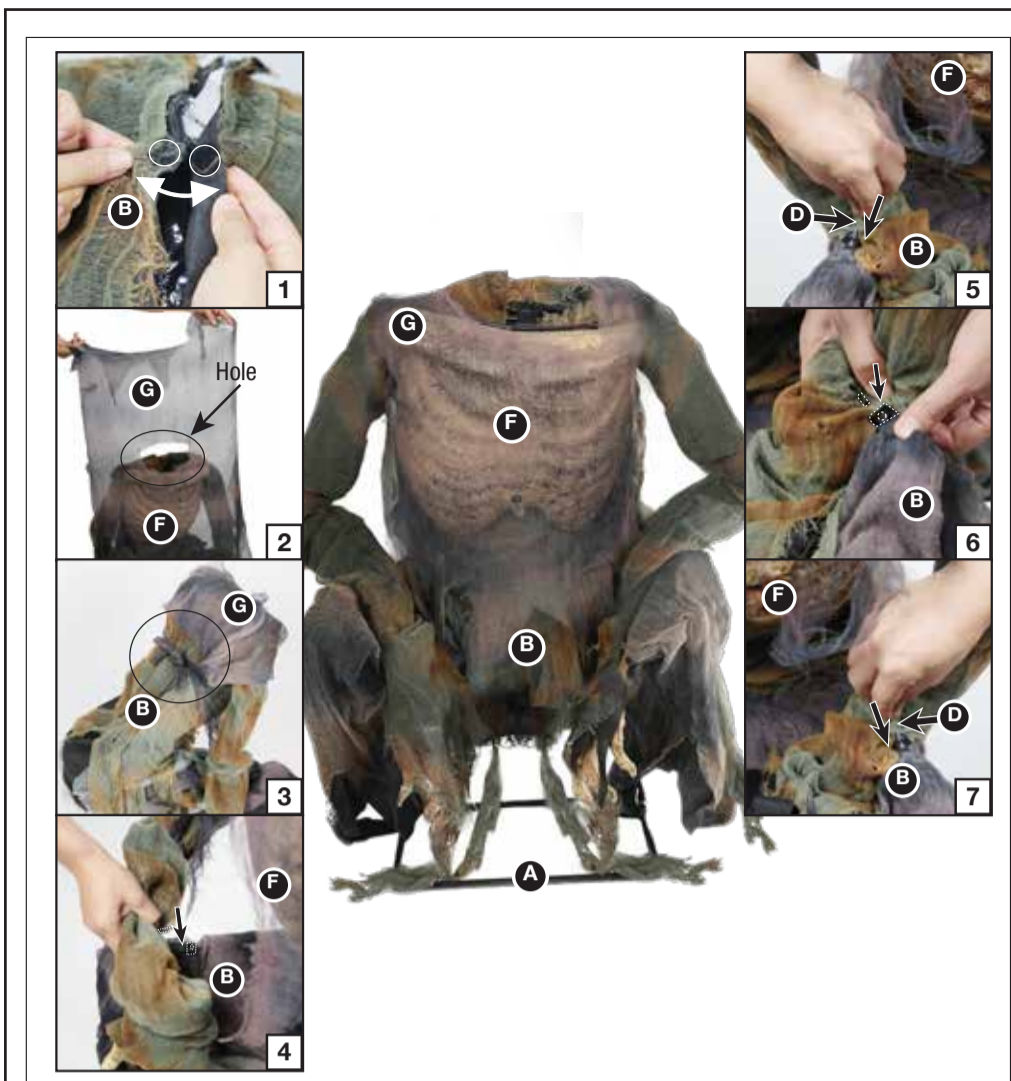
STEP1

Note: The end of the (A) Base without housings aims towards the front.
 Insert the (B) Body into the housings on the (A) Base as shown in Figure 1.
 Secure the (B) Body to the (A) Base using the (C) Wing Nuts on each side. Rotate the (C) Wing Nuts clockwise until tightened as shown in Figure 2.
 Attach the Connecting Rod available on the (B) Body to the peg which is also available on the (B) Body as shown in Figure 3.
 Insert the (D) Pins into the hole located on the upper portion of the available peg on the (B) Body and then bend the (D) Pins to fasten the Connecting Rod in place as shown in Figure 4.



STEP2

Now, plug the Adapter into the input receiving jack marked "DC 5.9V" on the Function Control Box.
 Note: Do not plug the Adapter into power outlet until item assembly is completed.
 Attach the (E) Shoulder Support to the (B) Body by sliding the pegs available on the (E) Shoulder Support into the housings on the top of the (B) Body as shown in Figure 1.
 Connect the cable from the sensor located on the (E) Chest to the corresponding cable from the Function Control Box located on the (B) Body as shown in Figure 2.
 Set the (E) Chest onto the (B) Body by using the forked hook available on the (E) Chest and the forked hook housing available on the (B) Body as shown in Figure 3.



STEP3

Secure the back of the (B) Body with the hook & loop closures as shown in Figure 1.
 Attach the (G) Chest Shroud to the (F) Chest and make the hole cover the head position as shown in Figure 2.
 Tie the (G) Chest Shroud at the back of the (B) Body as shown in Figure 3.
 Slide the peg available on the right arm of the (B) Body into the housing available on the right thigh of the (B) Body as shown in Figure 4.
 Secure the peg in place by inserting a (D) Pin into the hole available on the peg on the other side of the housing as shown in Figure 5. Bend the (D) Pin to secure in place.
 Then slide the peg available on the left arm of the (B) Body into the housing available on the left thigh of the (B) Body as shown in Figure 6.
 Secure the peg in place by inserting a (D) Pin into the hole available on the peg on the other side of the housing as shown in Figure 7. Bend the (D) Pin to secure in place.

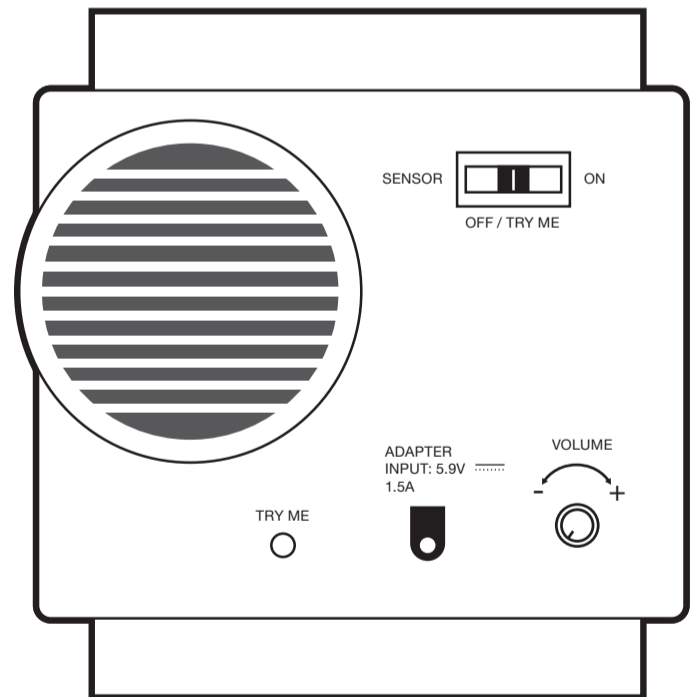


STEP4

Set the (H) Head onto the (B) Body by sliding the forked hook into the “neck” slot housing on the (B) Body as shown in Figure 1.
 Connect the cable from the (H) Head to the corresponding cable from the Function Control Box located on the (B) Body as shown in Figure 2.
 Now, the Crouching Bones is finished as shown.

OPERATION INSTRUCTIONS:

1. Plug the AC power adapter into a standard power outlet and adjust the settings on the Function Control Box, located on the (B) Body, as desired.
 2. Settings:
 - On: This setting allows the item to run continuously.
 - Off/Try-Me: This switch mode allows the item to be activated only if triggered by using a Step Here Try Me Activation Pad. The item will operate for one audio cycle with each Try-Me activation. Refer to Assembly Instructions Step 2 for further details.
 - Sensor: This switch mode will activate lights, sound, and animation when the Infra-red (IR) sensor is activated and will operate for 1 audio-cycle with each activation. The Infra-red (IR) sensor has a range of up to 2 m/6.5 ft. and will activate when someone comes within an 80-degree angle from left-to-right, as well as from above and below.
- : Raise or lower the volume using the volume control turn dial, turn and click all the way down to turn the volume off.



CAUTION: Changes or modifications not expressly approved by the party responsible for compliance could void the user's authority to operate the equipment.

NOTE: This equipment has been tested and found to comply with the limits for a Class B digital device, pursuant to Part 15 of the FCC Rules. These limits are designed to provide reasonable protection against harmful interference in a residential installation. This equipment generates, uses, and can radiate radio frequency energy and, if not installed and used in accordance with the instructions, may cause harmful interference to radio communications. However, there is no guarantee that interference will not occur in a particular installation. If this equipment does cause harmful interference to radio or television reception, which can be determined by turning the equipment off and on, the user is encouraged to try to correct the interference by one or more of the following measures: Reorient or relocate the receiving antenna. Increase the separation between the equipment and receiver. Connect the equipment into an outlet on a circuit different from that to which the receiver is connected. Consult the dealer or experienced radio/TV technician for help.