

EASY ASSEMBLY AND OPERATION INSTRUCTIONS

5124446 Stew Brewing Witch With Fog



This item, when assembled by the following instructions, should take 15 minutes to assemble. Please follow the step by step guide and enjoy your Stew Brewing Witch with Fog!

CARE AND STORAGE INSTRUCTIONS

For best performance operate your item indoors. When not in use, store this product in its original packing. Keep away from heat and moisture.

WARNING

This item is not a toy and should be used for decoration only. This item contains small parts that can be a choking hazard. Keep all plastic and wire parts away from children.

1. Please use the adapter supplied by manufacturer.
2. Please assemble item according to instructions. Connect all wires according to matching color.
3. Children should be supervised by adults. Item should not be grabbed, as it becomes a tipping hazard. Keep all away from the adapter, as it heats up during operation.

Please read all instructions carefully before assembling. Save this instruction sheet for future reference.

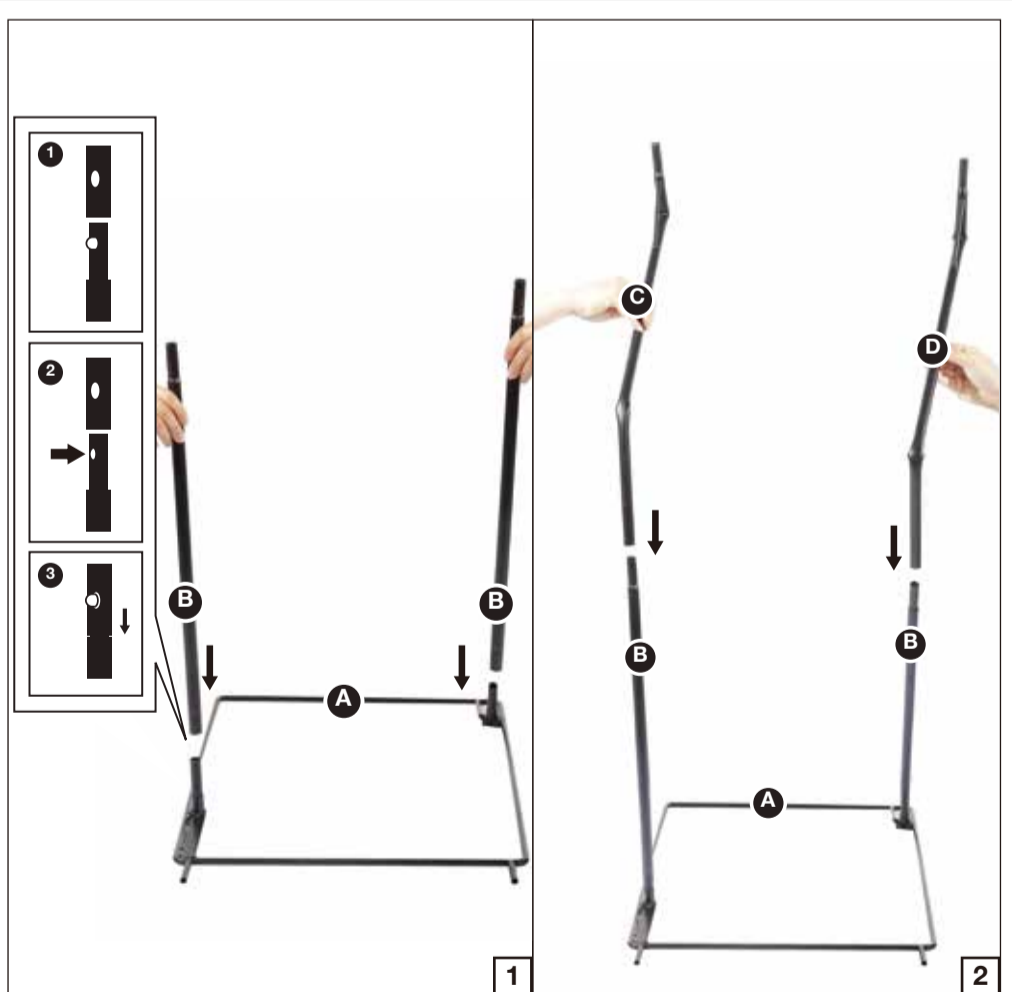
PARTS LIST

- A. Base
- B. Lower Support Poles x 2
- C. Right Upper Support Pole
- D. Left Upper Support Pole
- E. Torso Frame
- F. Hip Hoop
- G. Shoulder Support
- H. Costume
- I. Head
- J. Right Arm
- K. Left Arm with Child
- L. Rope Belt
- M. Necklace
- N. Shawl
- O. Hat
- P. Cauldron
- Q. Cauldron Support Poles x 6
- R. Cauldron Light Support Frame
- S. Step Pad
- T. Fog Hose
- U. Fog Machine Adapter
- V. Fog Machine (Located in Separated Carton)

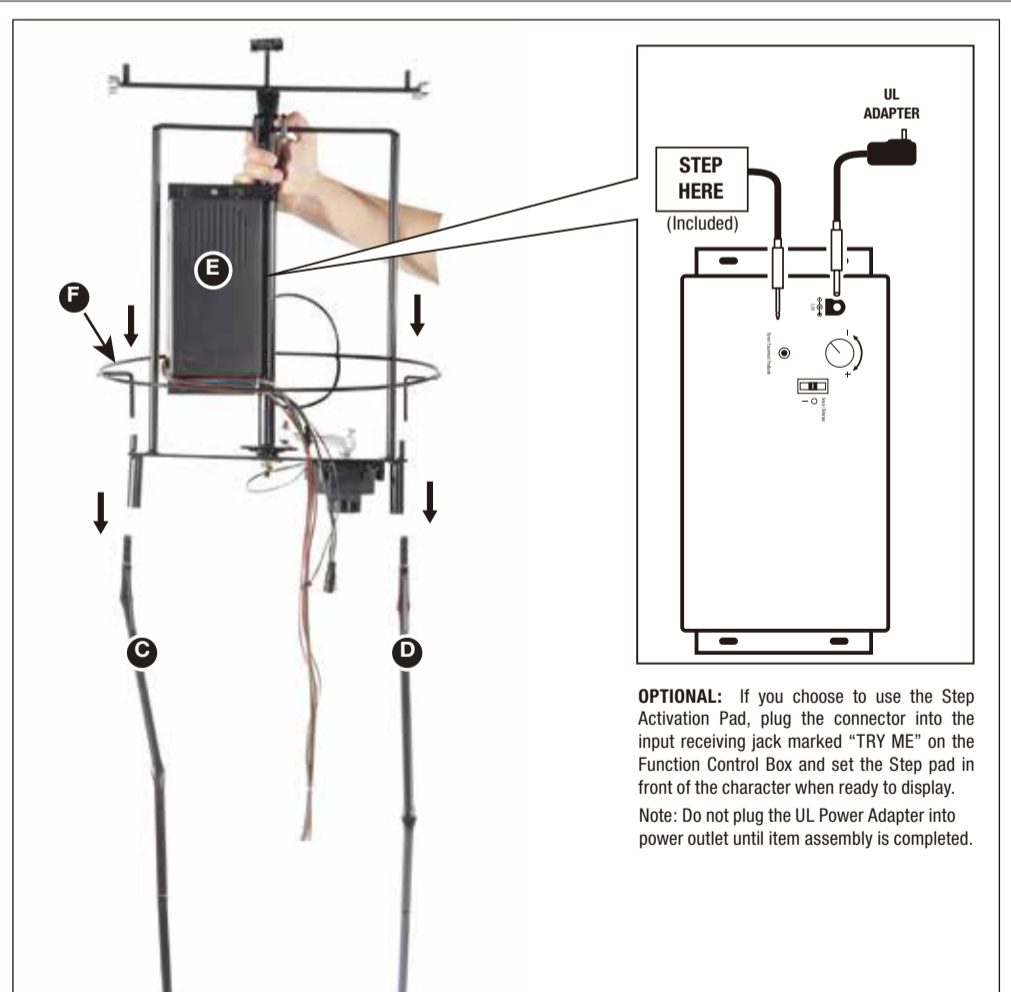


UL Power Adapter *
 * UL Power Adapter Spec
 Input: 100 - 240VAC 50/60Hz
 Output: 5.9V 1.5A

BEFORE ASSEMBLING, REMOVE ALL THE ABOVE PARTS FROM BOX. IF ANY PART IS MISSING, DO NOT ATTEMPT TO ASSEMBLE THE PRODUCT AND CONTACT CUSTOMER SERVICE FROM 8:30AM TO 5:30PM PST AT 1-855-428-3921.

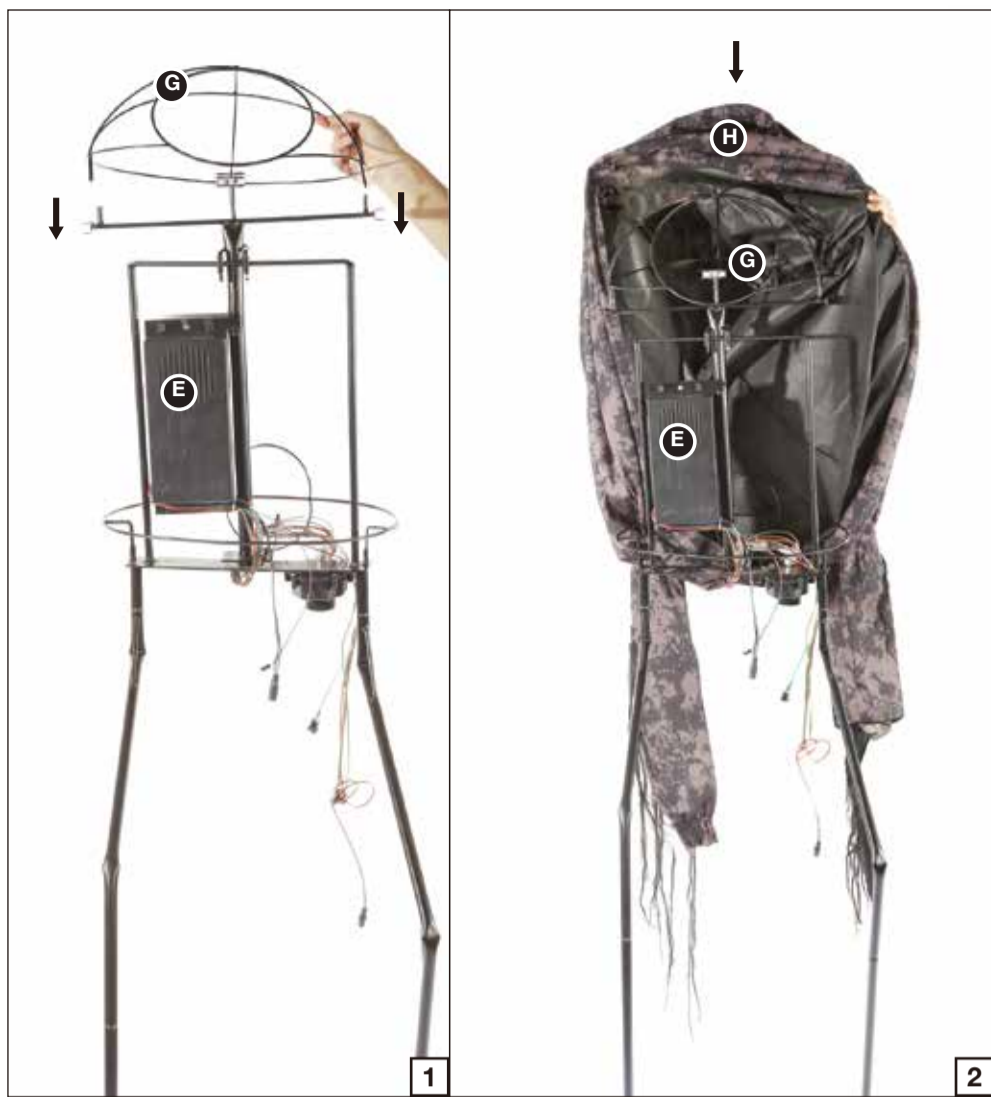


STEP 1
 Note: The posts located on the (A) Base angle towards the front.
 Attach the (B) Lower Support Poles to the (A) Base as shown and secure by aligning the quick-connect push button into the pre-drilled holes as shown in Figure 1.
 Assemble the (C) & (D) Upper Support Poles to the (B) Lower Support Poles as shown in Figure 2, and secure by aligning the quick-connect push buttons into the pre-drilled holes.



STEP 2
 NOTE: The speaker on the Function Control Box located on the (E) Torso Frame should be facing front.
 Attach the (E) Torso Frame on top of the (C) & (D) Upper Support Poles, and secure by aligning the quick-connect push buttons into the pre-drilled holes.
 Lower the (F) Hip Hoop down over the (E) Torso Frame and attach the (F) Hip Hoop through the slots located on the (E) Torso Frame as shown.
 Plug the Adapter into the input DC 5.9V on the function control box.

OPTIONAL: If you choose to use the Step Activation Pad, plug the connector into the input receiving jack marked "TRY ME" on the Function Control Box and set the Step pad in front of the character when ready to display.
 Note: Do not plug the UL Power Adapter into power outlet until item assembly is completed.



STEP 3
 Attach the (G) Shoulder Frame into the slots located on the top of the (E) Torso Frame as shown in Figure 1.
 Lower the (H) Costume down over the (G) Shoulder Support & (E) Torso Frame as shown in Figure 2.



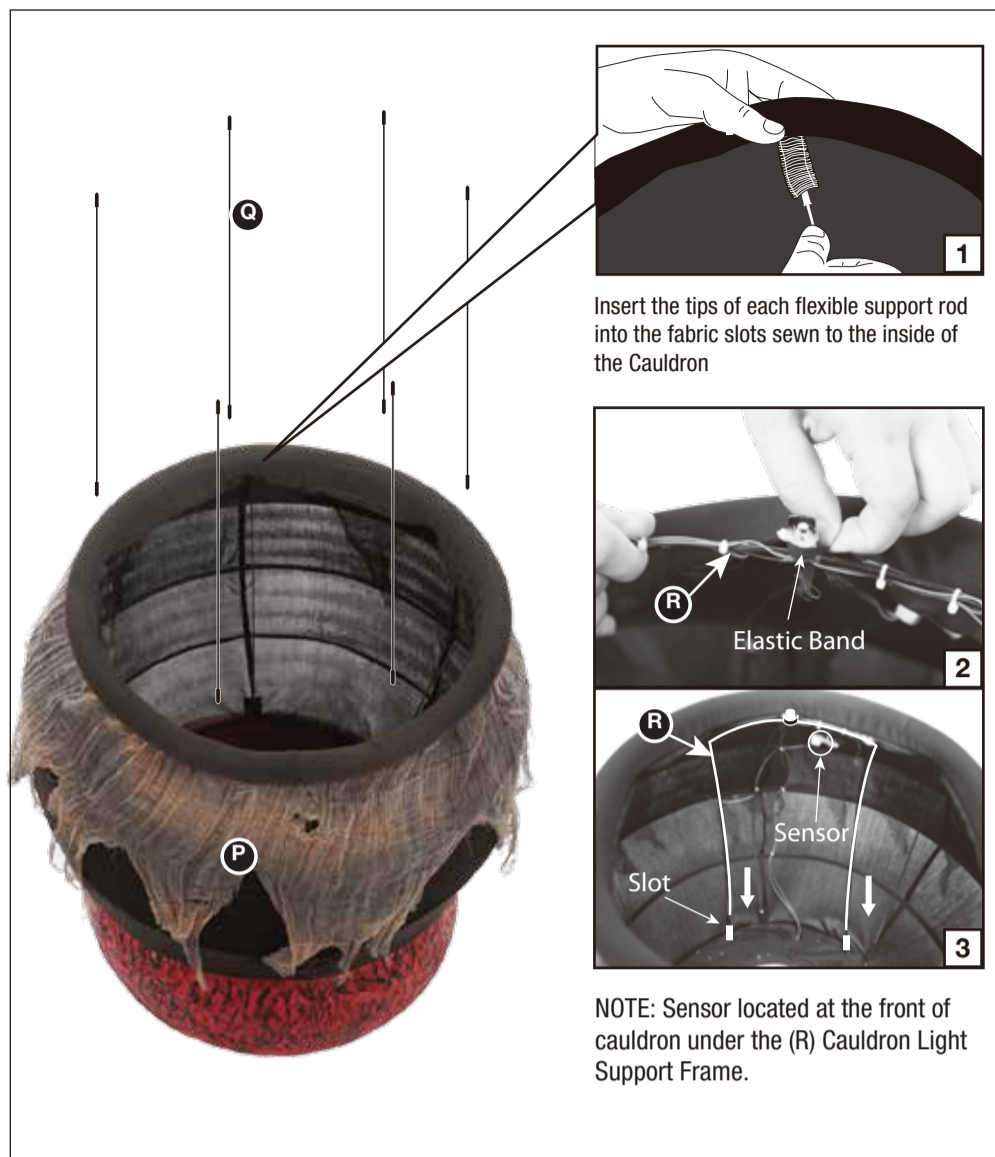
STEP 4
 Lower the (H) Costume down over the frame as shown in Figure 1.
 Set the (I) Head onto the (E) Torso Frame by sliding the forked-hook into the "neck" slot housing on the (E) Torso Frame as shown in Figure 2.
 Connect the cables from the (I) Head to the color-coordinated cables on the Function Control box located on the (E) Torso Frame as shown in Figure 3.



STEP 5
 Slide the (J) Right Arm up through the Right sleeve of the (H) Costume and slide the forked-hook into the right "shoulder" slot housing on the (E) Torso Frame as shown in Figure 1.
 Slide the (K) Left Arm with Child up through the Left sleeve of the (H) Costume and slide the forked-hook into the left "shoulder" slot housing on the (E) Torso Frame as shown in Figure 2.
 Connect the cable from the (K) Left Arm with Child to the coordinated cable on the Function Control box located on the (E) Torso Frame as shown in Figure 3.
 Secure under the neck and at the back of the (H) Costume with the hook and loop closures as shown in Figure 4. & 5.



STEP 6
 Wrap the (L) Rope Belt around the waist and tie in front as shown in Figure 1.
 Set the (M) Necklace around the neck as shown in Figure 2.
 Drape the (N) Shawl over the shoulders of the witch as shown in Figure 3.
 Set the (O) Hat onto the (I) Head as shown in Figure 4.



1
Insert the tips of each flexible support rod into the fabric slots sewn to the inside of the Cauldron

2
Elastic Band

3
Sensor
Slot

NOTE: Sensor located at the front of cauldron under the (R) Cauldron Light Support Frame.

STEP 7

Assemble the (P) Cauldron by sliding the ends of each (Q) Cauldron Support Poles into the fabric pouches found at the top and bottom of the inside of the cauldron as shown in Figure 1. Attach the top center of the (R) Cauldron Light Support Frame on the top of the cauldron using elastic band as shown in Figure 2. Insert Poles of the (R) Cauldron Light Support Frame into the slots located on the cauldron base as shown in Figure 3.

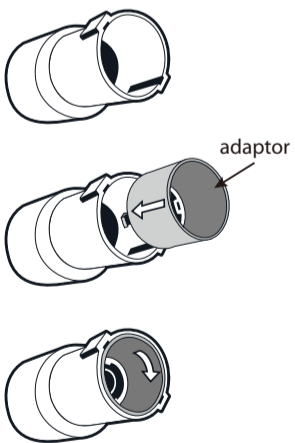


STEP 8

Set Assembled (P) Cauldron onto (A) Base by attaching the slots located at the front of (A) Base as shown. Connect A1, A2, A3 cables from the (P) Cauldron to the coordinating cables from the Function control box on (E) Torso Frame through the (H) Costume.



Fog Hose Connector



STEP 9

Remove the (V) Fog Machine from separated carton, Set the (V) Fog Machine behind the character and run the small end of the (T) Fog Hose over the base and under the bottom of the (P) Cauldron, and attach the large end of the hose onto the nozzle of the (V) Fog Machine as shown in Figure 1. **NOTE: If the connector does not fit, remove the inner adaptor ring and re-connect to the nozzle of Fog Machine as shown in Figure 2.** Plug the cable from the Function Control Box located on the (E) Torso Frame through the (H) Costume into the jack on the (U) Fog Machine Adapter as shown in Figure 3. Connect the (U) Fog Machine Adapter to the (V) Fog Machine as shown in Figure 4.



OPERATION INSTRUCTIONS:

1. Plug the UL power adapter into a standard power outlet and adjust the settings on the Function Control Box, located on the (E) Torso Frame, as desired.

2. Settings:

Sensor: This switch mode will activate lights, sound, and animation when the Infra-red (IR) sensor is activated and will operate for 1 audio-cycle with each activation. The Infra-red (IR) sensor has a range of up to 2 m/6.5 ft. and will activate when someone comes within an 80-degree angle from left-to-right, as well as from above and below.

O/OFF/Try Me: This switch mode allows the item to be activated only if triggered by using a Step Here Try Me Activation Pad. The item will operate for one audio cycle with each Try Me activation. Refer to Assembly Instructions Step2 for further details.

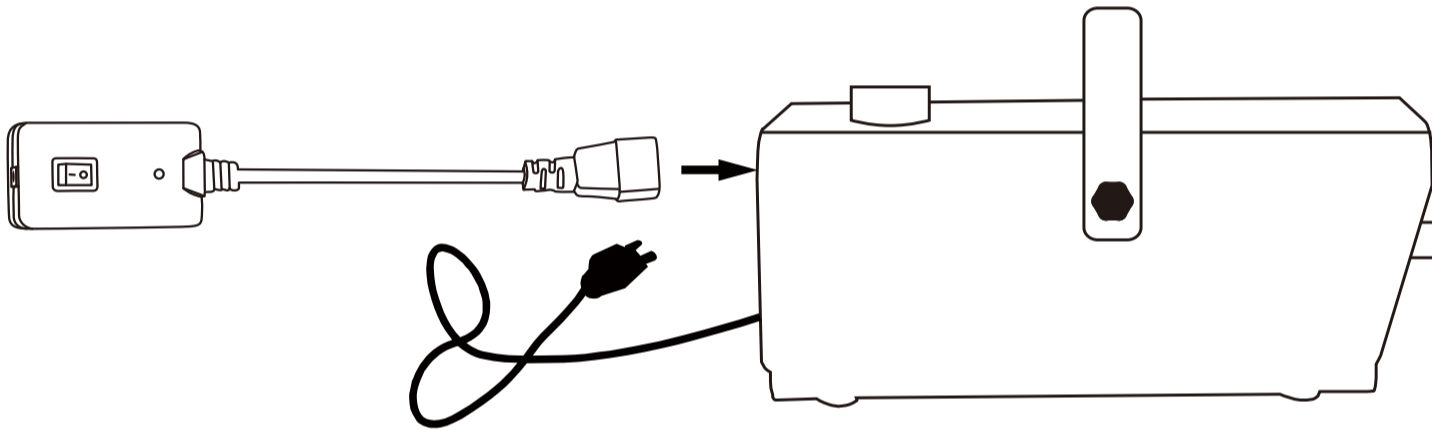
I / ON : This switch mode will continuously operate the lights, sound, and animation of the item.



: Raise or lower the volume using the volume control turn dial, turn and click all the way down to turn the volume off.

FOG MACHINE ADAPTER INSTRUCTION:

- Use the (U) Fog Machine Adapter only with SVI 400 Watt Fog Machine (Included).
- Connect the 3-prong plug of the (U) Fog Machine Adapter into the jack at the back of the Fog Machine.
- Connect the power cord of the Fog Machine into a power outlet.
- Turn the power switch of the Fog Machine to the "ON" position.
- After the Fog Machine warms up (approx. 5 minutes), the light on the (U) Fog Machine Adapter will turn on.
- Press the "ON" switch, The fog machine will be ready to produce fog.
- Press the "OFF" switch, the fog machine will produce fog only when the witch activates.
- Be sure to follow all safety precautions included with the Fog Machine during operation.



IMPORTANT SAFETY INSTRUCTIONS

Read Fog Machine instructions located in Fog Machine separated carton before operating.

Open the package and check for obvious damage during shipping. If found, discontinue use and contact the distributor.

This device complies with Part 15 of the FCC Rules. Operation is subject to the following two conditions: (1) This device may not cause harmful interference, and (2) this device must accept any interference received, including interference that may cause undesired operation.

CAUTION: Changes or modifications not expressly approved by the party responsible for compliance could void the user's authority to operate the equipment.

NOTE: This equipment has been tested and found to comply with the limits for a Class B digital device, pursuant to Part 15 of the FCC Rules. These limits are designed to provide reasonable protection against harmful interference in a residential installation. This equipment generates, uses and can radiate radio frequency energy and, if not installed and used in accordance with the instructions, may cause harmful interference to radio communications. However, there is no guarantee that interference will not occur in a particular installation. If this equipment does cause harmful interference to radio or television reception, which can be determined by turning the equipment off and on, the user is encouraged to try to correct the interference by one or more of the following measures: Reorient or relocate the receiving antenna, increase the separation between the equipment and receiver, connect the equipment into an outlet on a circuit different from that to which the receiver is connected. Consult the dealer or experienced radio/TV technician for help.

