

# EASY ASSEMBLY AND OPERATION INSTRUCTIONS

5124395 Twitching Clown



This item, when assembled by the following instructions, should take 15 minutes to assemble.  
Please follow the step by step guide and enjoy your Twitching Clown!

### CARE AND STORAGE INSTRUCTIONS

For best performance operate your item indoors or in a sheltered outdoor area. We also recommend that you bring your item indoors during adverse weather (extreme cold, strong winds and/or rain). When not in use, store this product in it's original packaging. Keep away from heat and moisture.

**WARNING:** This product may contain a chemical known to the state of California to cause cancer, or birth defects or other reproductive harm.

### WARNING

This item is not a toy and should be used for decoration only. This item contains small parts that can be a choking hazard. Keep all plastic and wire parts away from children. This product is intended for people ages 14 and up.

1. Please use the applicable transformer or the one supplied by manufacturer.
2. Please install the product according to the instruction, the connecting wire should be connected in the correct color
3. Children should be supervised by adults when using the product and keep the transformer away from kids.
4. The transformer should be inspected regularly.

Please read all instructions carefully before assembling. Save this instruction sheet for future reference

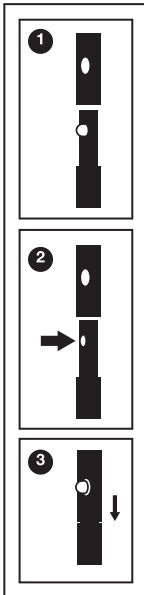
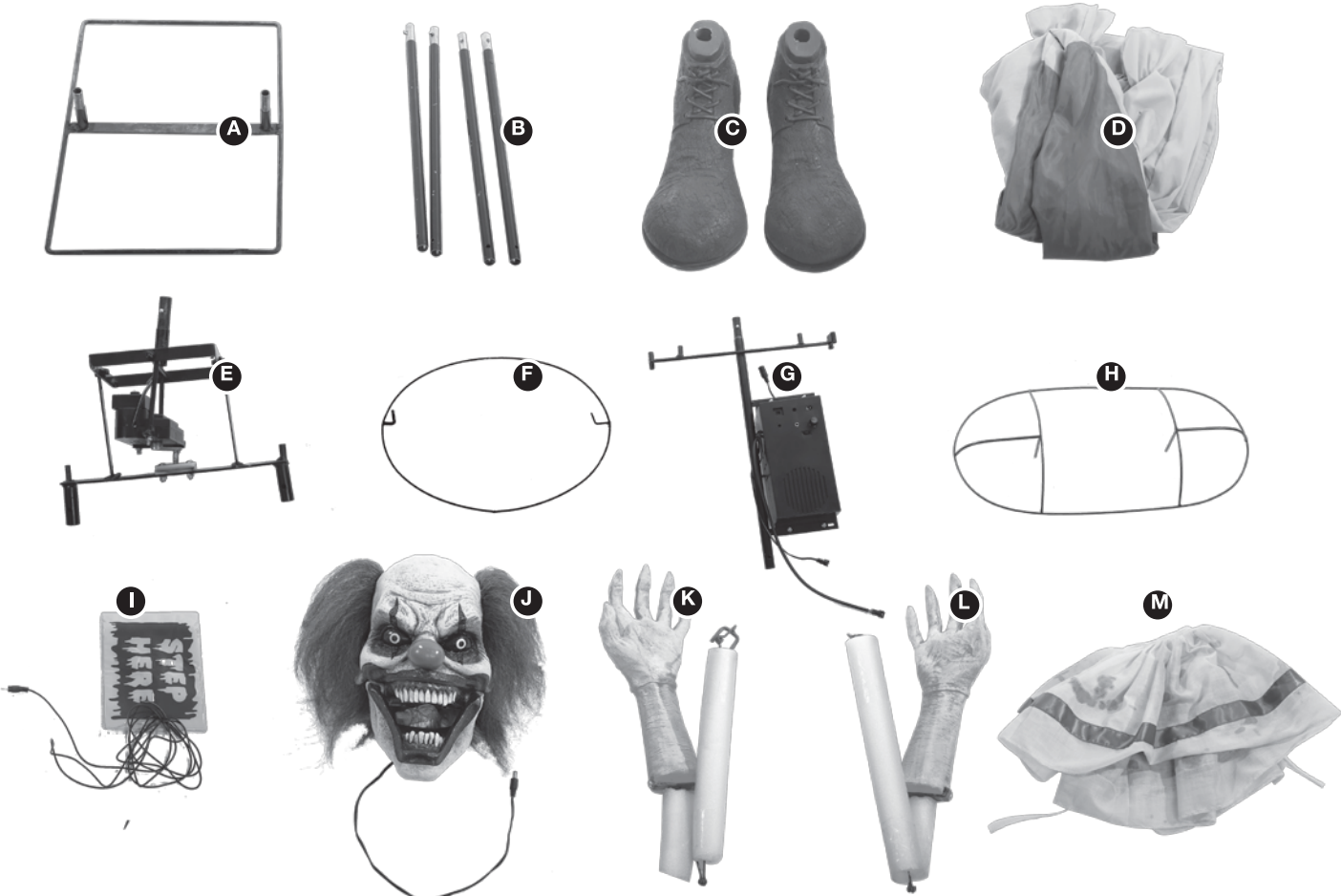
### PARTS LIST

- A. Base
- B. Support Poles x 4
- C. Shoes (Left & Right)
- D. Costume
- E. Torso Frame
- F. Hip Hoop
- G. Upper Torso Frame
- H. Shoulder Frame
- I. Step Pad
- J. Head
- K. Left Hand
- L. Right Hand
- M. Collar



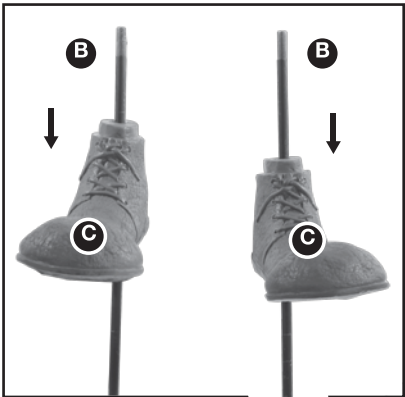
UL Adapter \*

\* UL Power Adapter Spec  
Input: 100 - 240VAC 50/60Hz  
Output: 5.9V 1A



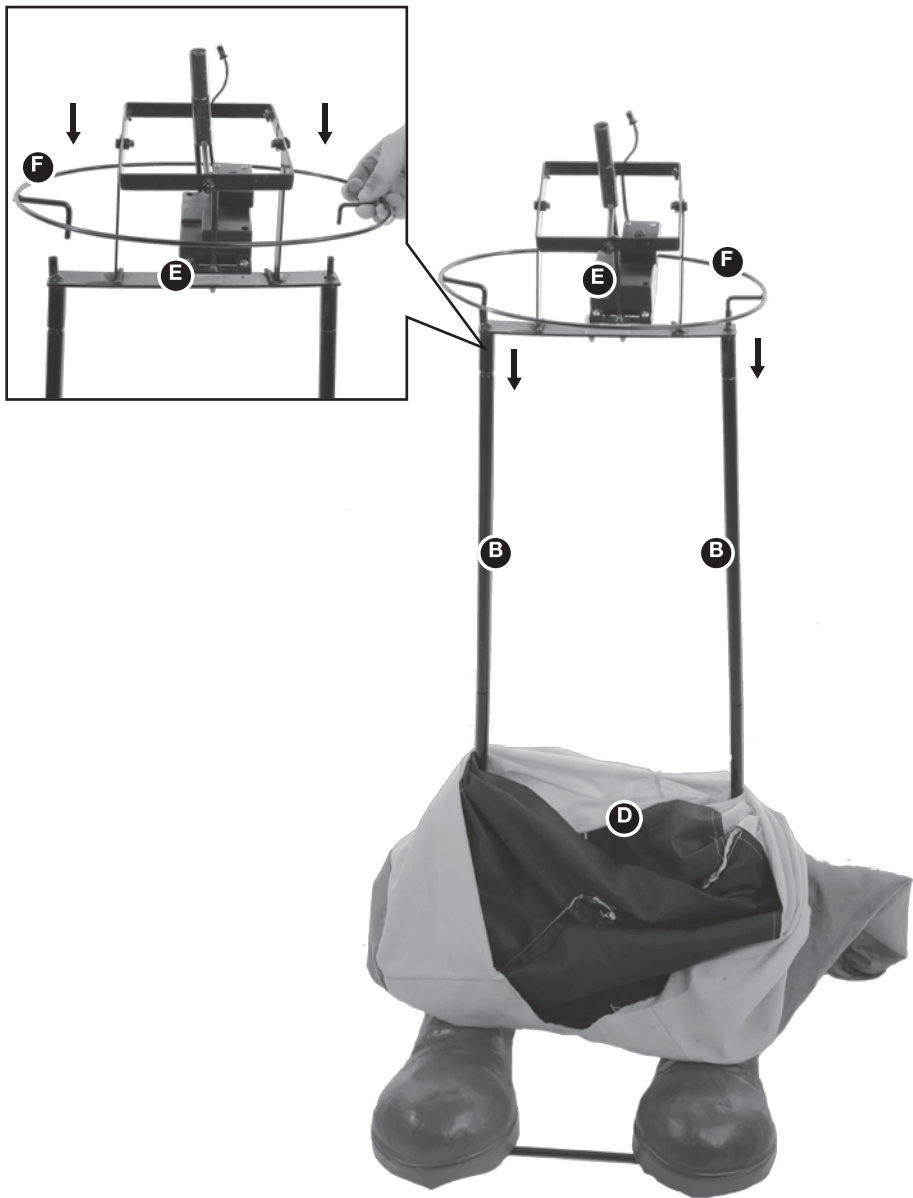
### STEP 1

NOTE: The longer end of the (A) Base goes towards the front. First, assemble the (B) Support Poles to each other and to the (A) Base as shown, and secure by aligning the quick-connect push buttons into the pre-drilled holes.

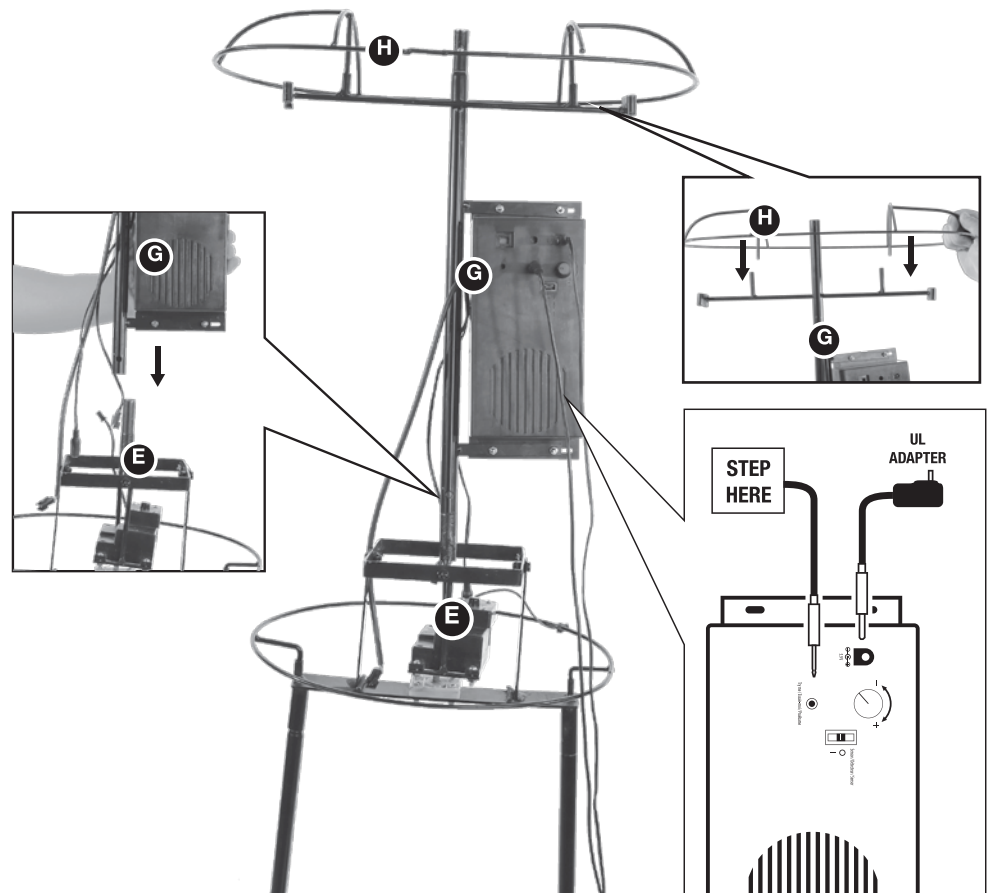


### STEP 2

Slide the (C) Shoes onto the assembled (B) Support Poles to rest upon the (A) Base as shown.  
NOTE: The (D) Costume opens/closes at the back.  
Next, lower the (D) Costume over the (B) Support Poles through the leg openings & out through the neck opening of the (D) Costume.



**STEP 3**  
Attach the (E) Torso Frame on top of the (B) Support Poles and secure by aligning the quick-connect push buttons into the pre-drilled holes.  
Lower the (F) Hip Hoop down over the (E) Torso Frame and attach through the slots located on the sides at the bottom of the (E) Torso Frame as shown.



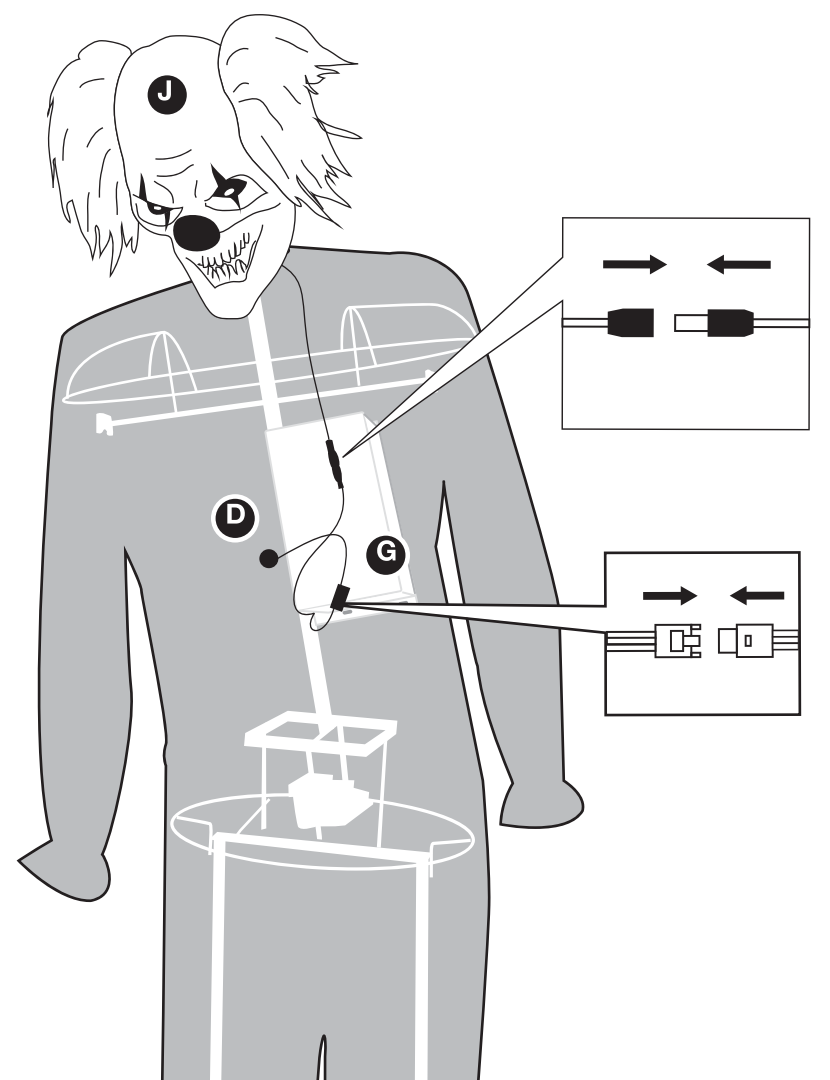
**STEP 4**  
**NOTE:** The speaker on the Function Control Box located on the (G) Upper Torso Frame should be facing front.  
Set the (G) Upper Torso Frame on top of the (E) Torso Frame as shown. Next, set the (H) Shoulder Frame into the slot housings on the (G) Upper Torso Frame as shown.  
Now, plug the UL Power Adapter into the input receiving jack marked "DC 5.9V" on the Function Control Box and route the UL Power Adapter down one of the pant legs and out the bottom of the item.

**OPTIONAL:** If you choose to use the (I) Step Here Try-Me Activation Pad, plug the connector into the input receiving jack marked "TRY ME" on the Function Control Box and set the Step Here pad in front of the character when ready to display.

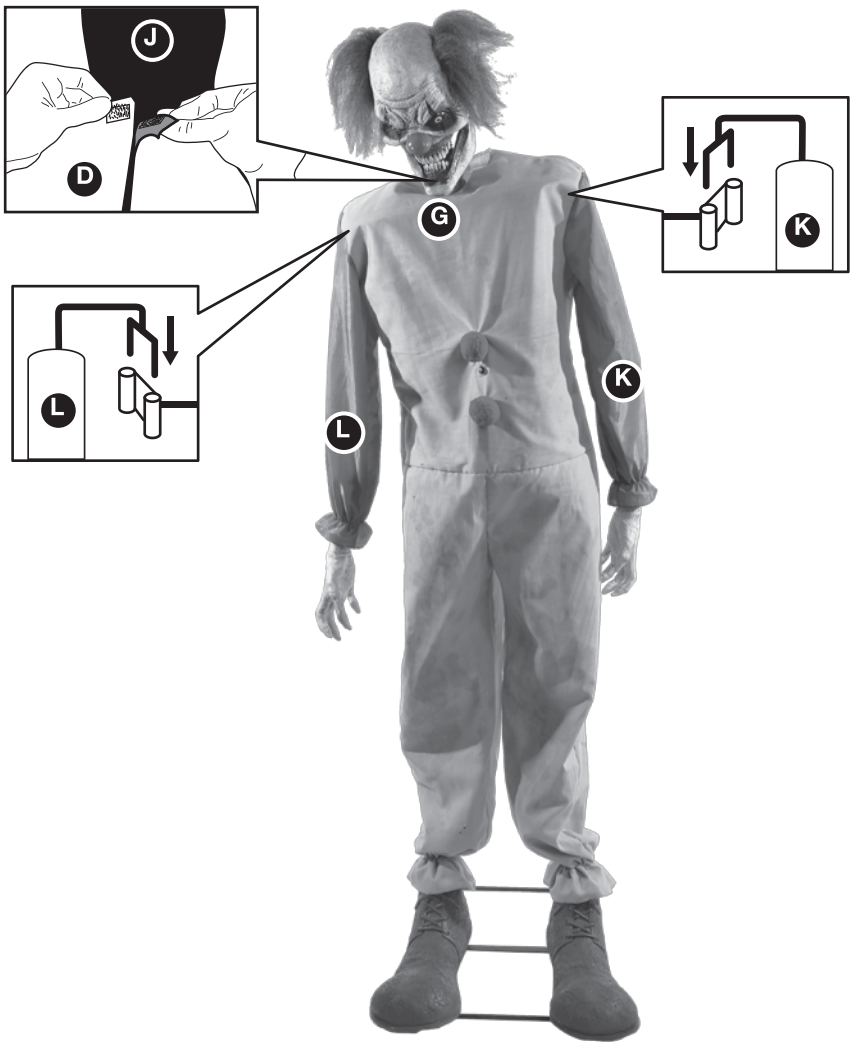
**Note:** Do not plug the UL Power Adapter into power outlet until item assembly is completed.



**STEP 5**  
Pull the (D) Costume up over (G) Upper Torso Frame and leave the hook and loop closures open at the back for now. Set the (J) Head onto the "neck" slot housing on the (G) Upper Torso Frame and secure by aligning the quick-connect push button into the pre-drilled hole.



**STEP 6**  
Connect the cable from the (J) Head to the color-coordinated cables on the Function Control box on the (G) Upper Torso Frame as shown.  
Now connect the sensor cable from the (D) Costume to the coordinating cable on the Function Control box on the (G) Upper Torso Frame as shown.



**STEP 7**  
Slide the (K) Left Arm up through the left sleeve and slide the forked-hook into the left “shoulder” slot housing on the (G) Upper Torso Frame. Now, Slide the (L) Right Arm up through the right sleeve and slide the forked-hook into the right “shoulder” slot housing on the (G) Upper Torso Frame. Now you can secure the hook & loop closures at the back of the (D) Costume.



**STEP 8**  
Drape the (M) Collar around the neck and tie in back..

### OPERATION INSTRUCTIONS

1. Plug the UL Power Adapter into a standard power outlet and adjust the settings on the Function Control Box to your liking.
2. Twitching Clown has 3 operation settings which can be found on the main Function Control Box on the (G) Upper Torso Frame:
  - “ I ” On: This setting allows the item to run continuously.
  - Sensor: This setting allows the item to only be activated when the infra-red sensor is activated. The item will operate for one audio-cycle with each sensor activation.
    - The Infra-red (IR) sensor will activate when someone comes within an 80-degree angle from left-to-right, as well as from above and below.
    - The Infra-red (IR) sensor has a range of up to 2 meters/6.56 feet, and can work in all lighting conditions – bright light to no-light!
  - “ O ” Off/Try-Me: This setting allows the item to be activated only if the Try-Me is triggered. The item will operate for one audio-cycle with each Try-Me activation.

The Function Control box also includes a Volume Control knob, which allows you to adjust the volume to be as loud or as quiet as needed. Be sure to test the item before finalizing your display so you can set the volume to your liking.

ENJOY YOUR TWITCHING CLOWN!

**CAUTION:** Changes or modifications not expressly approved by the party responsible for compliance could void the user’s authority to operate the equipment.

**NOTE:** This equipment has been tested and found to comply with the limits for a Class B digital device, pursuant to Part 15 of the FCC Rules. These limits are designed to provide reasonable protection against harmful interference in a residential installation. This equipment generates, uses and can radiate radio frequency energy and, if not installed and used in accordance with the instructions, may cause harmful interference to radio communications. However, there is no guarantee that interference will not occur in a particular installation. If this equipment does cause harmful interference to radio or television reception, which can be determined by turning the equipment off and on, the user is encouraged to try to correct the interference by one or more of the following measures; Reorient or relocate the receiving antenna. Increase the separation between the equipment and receiver. Connect the equipment into an outlet on a circuit different from that to which the receiver is connected. Consult the dealer or experienced radio/TV technician for help.

