

EASY ASSEMBLY AND OPERATION INSTRUCTIONS

MR-124394 Granny Bates



Please follow the step by step guide and enjoy your Granny Bates!

CARE AND STORAGE INSTRUCTIONS

For best performance operate your item indoors. When not in use, store this product in its original packing. Keep away from heat and moisture.

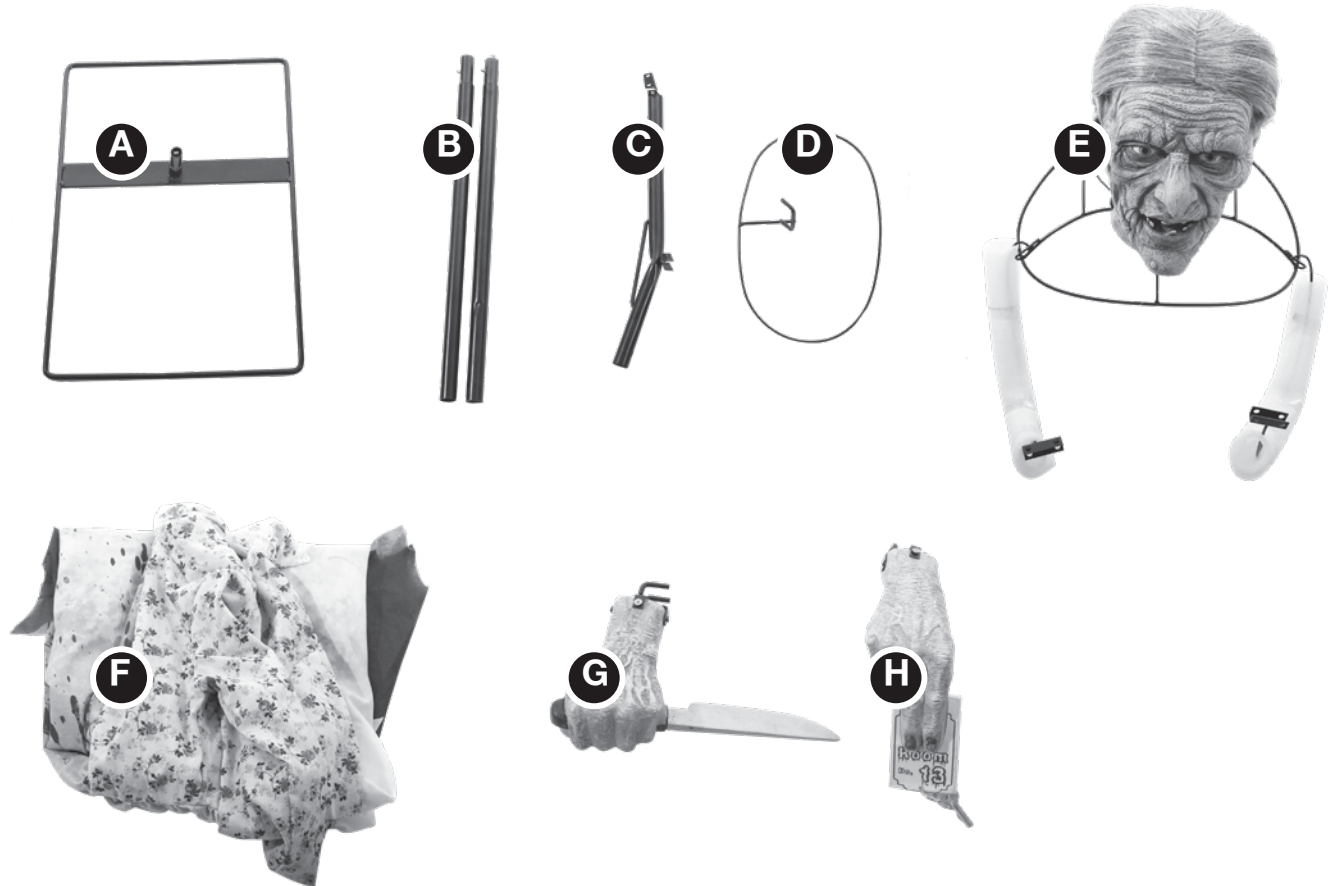
WARNING

This item is not a toy and should be used for decoration only. This item contains small parts that can be a choking hazard. Keep all plastic and wire parts away from children. This product is intended for people ages 14 and up.

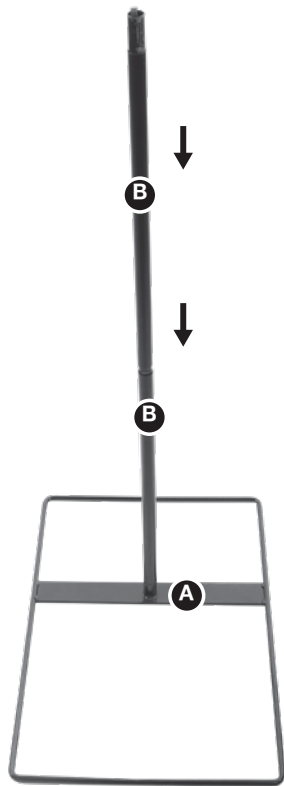
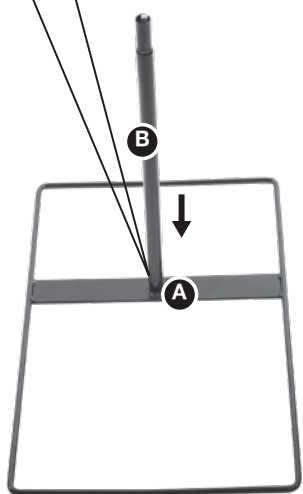
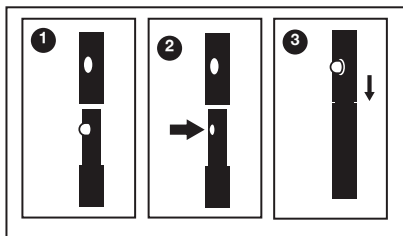
Please read all instructions carefully before assembling. Save this instruction sheet for future reference

PARTS LIST

- A. Base x 1
- B. Support Poles x 2
- C. Upper Support Pole x 1
- D. Hip Loop x 1
- E. Torso Frame x 1
- F. Costume x 1
- G. Left Hand x 1
- H. Right Hand x 1

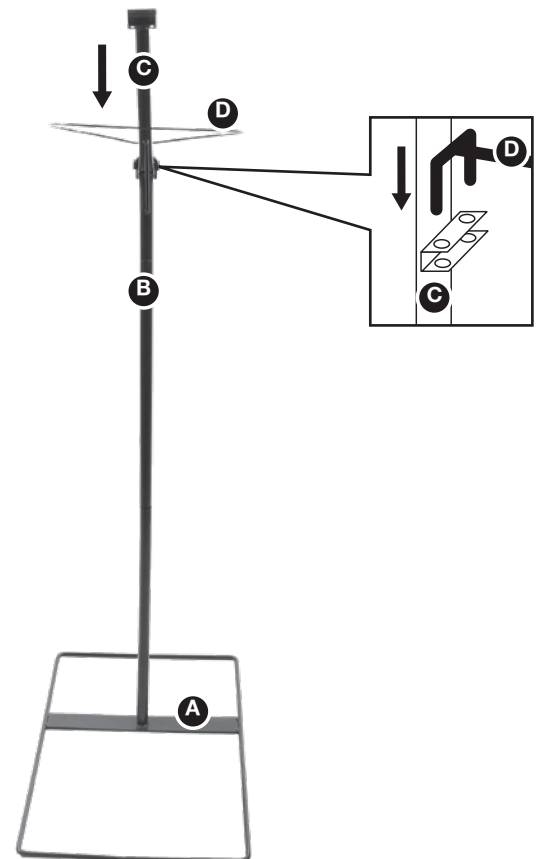


BEFORE ASSEMBLING, REMOVE ALL THE ABOVE PARTS FROM BOX. IF ANY PART IS MISSING, PLEASE CONTACT CUSTOMER SERVICE AT SUPPORT@MORRISCOSTUMES.COM, OR BY PHONE 704-332-3304. IN YOUR EMAIL INQUIRY, PLEASE INCLUDE: YOUR ORDER NUMBER, WHO YOU BOUGHT IT FROM, AND WHAT SPECIFICALLY IS WRONG. THANK YOU.



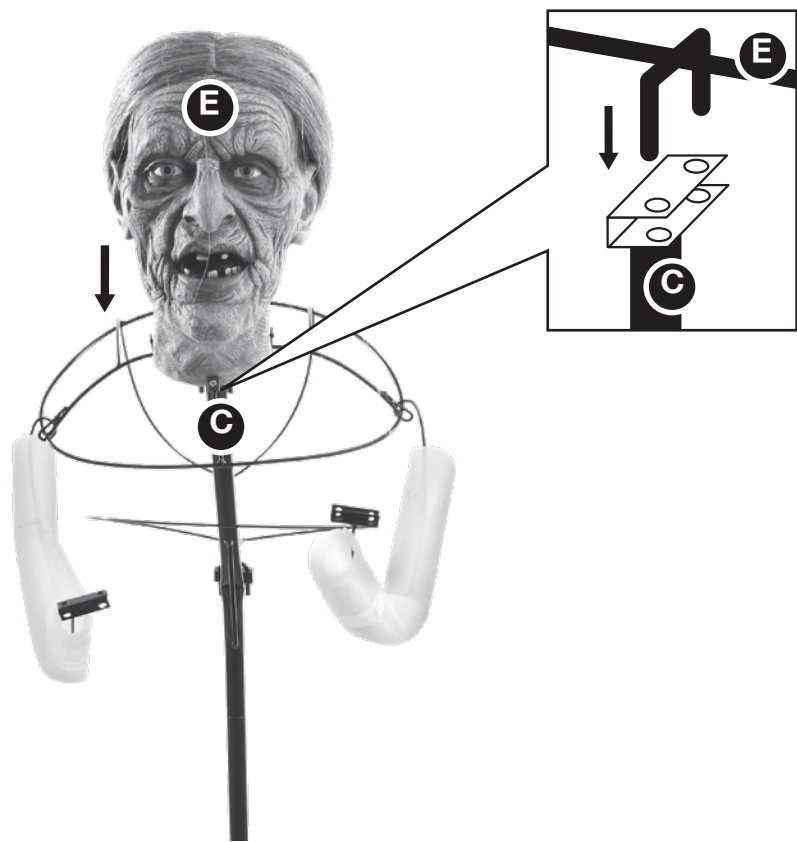
STEP 1

NOTE: The longer end of the (A) Base goes towards the front. First, assemble the (B) Support Poles to each other and to the (A) Base as shown, and secure by aligning the quick-connect push buttons into the pre-drilled holes.



STEP 2

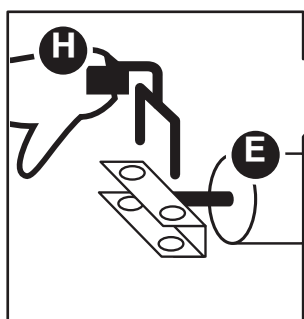
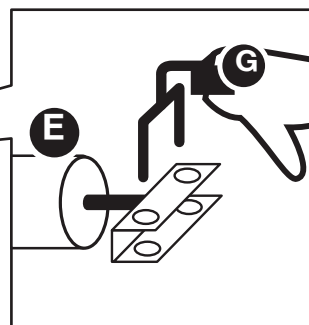
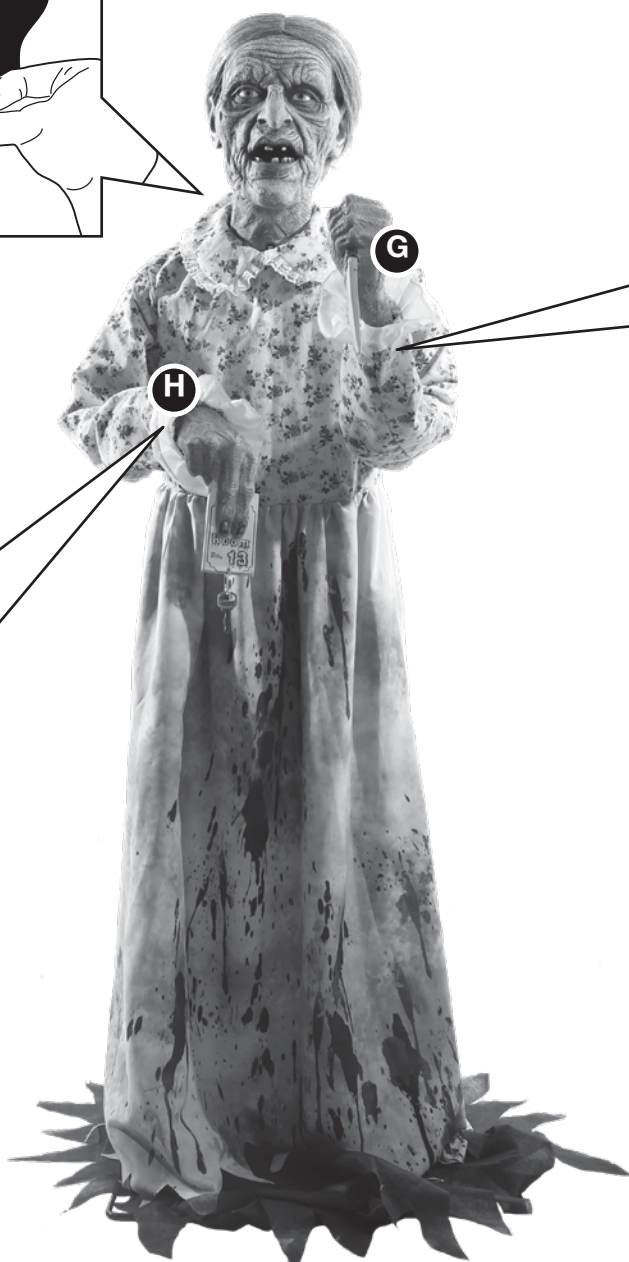
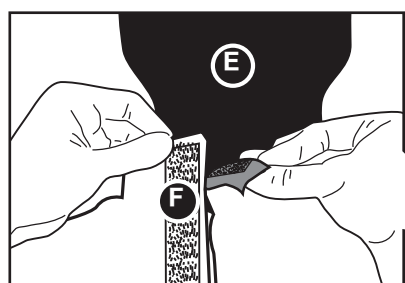
Assemble the (C) Upper Support Pole to the assembled (B) Support Poles as shown and secure by aligning the quick-connect push button into the pre-drilled hole. Slide the forked-hook on the (D) Hip Loop into the slot housing on the back of the (C) Upper Support Pole as shown.



STEP 3

Set the forked-hook on the underside of the (E) Torso Frame into the slot housing found on the top of the (C) Upper Support Pole as shown.

NOTE: The costume opens/closes at the back. Lower the (F) Costume down over the (E) Torso Frame and guide the arms through the sleeves of the (F) Costume as shown.



STEP 4

Secure the hook and loop closures at the back of the (F) Costume as shown. Set the (G) Left Hand into place by sliding the forked-hook into the "wrist" slot housing on the end of the left arm. Then, set the (H) Right Hand into place by sliding the forked-hook into the "wrist" slot housing on the end of the right arm. For best results pose the arms as shown.

ENJOY YOUR GRANNY BATES!