

EASY ASSEMBLY AND OPERATION INSTRUCTIONS

MR-123908 Tricycle Clown



Please follow the step by step guide and enjoy your Tricycle Clown!

WARNING

This item is not a toy and should be used for decoration only. This item contains small parts that can be a choking hazard. Keep all plastic and wire parts away from children. This product is intended for people ages 14 and up.

Please read all instructions carefully before assembling. Save this instruction sheet for future reference.

CARE AND STORAGE INSTRUCTIONS

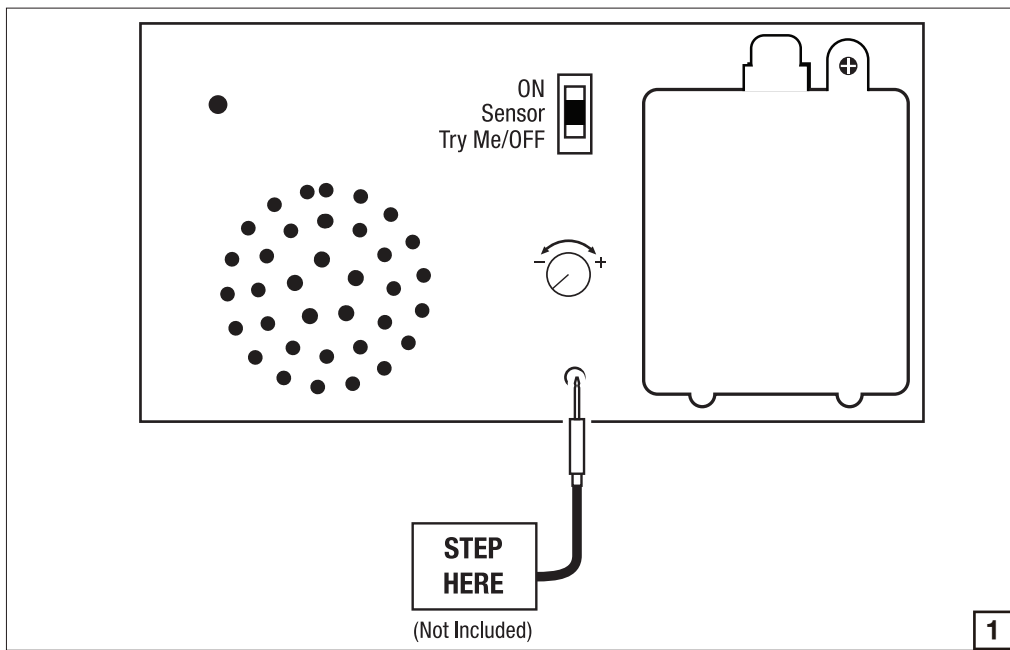
For best performance operate your item indoors. When not in use, store this product in its original packing. Keep away from heat and moisture.

PARTS LIST

- A. Clown x 1
- B. Tricycle Motor x 1



BEFORE ASSEMBLING, REMOVE ALL THE ABOVE PARTS FROM BOX. IF ANY PART IS MISSING, PLEASE CONTACT CUSTOMER SERVICE AT SUPPORT@MORRISCOSTUMES.COM, OR BY PHONE 704-332-3304. IN YOUR EMAIL INQUIRY, PLEASE INCLUDE: YOUR ORDER NUMBER, WHO YOU BOUGHT IT FROM, AND WHAT SPECIFICALLY IS WRONG. THANK YOU.



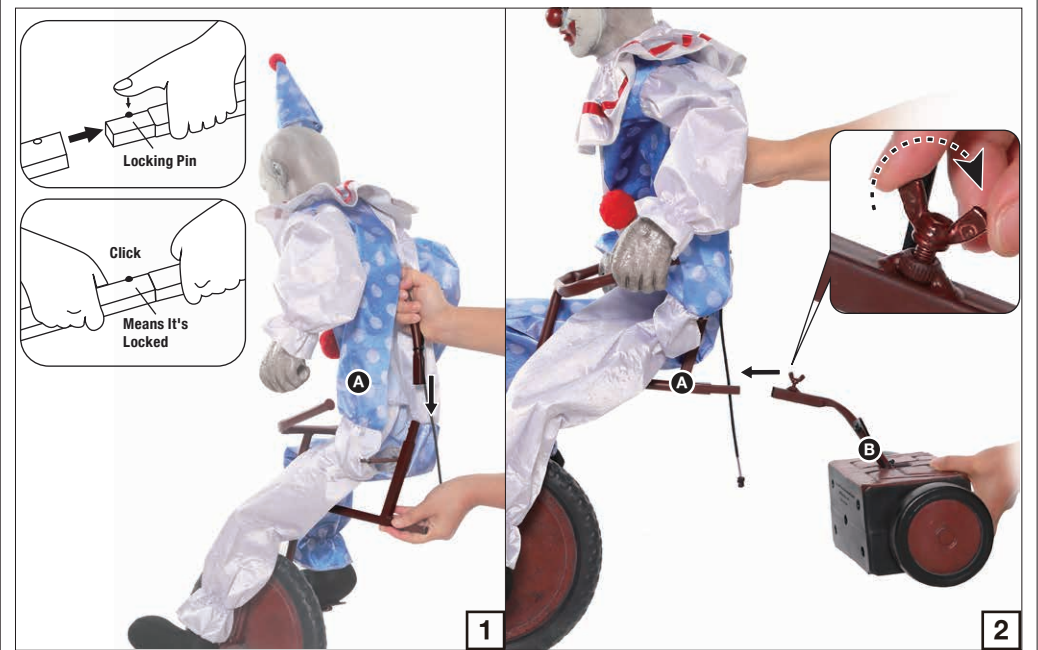
STEP 1

Note: Install Battery Before Assembling.

* 4 AA Batteries Required (Not Included)

You will need a screwdriver (Not Included).

Remove safety screw with screwdriver, slide battery cover to open, insert new batteries observing correct polarity, and then replace the lid and screw. Do not overtighten screw as shown in Figure 1. If you choose to use the Step Activated Pad, plug the connector into the input receiving jack marked "TRY ME" on the Function Control Box.

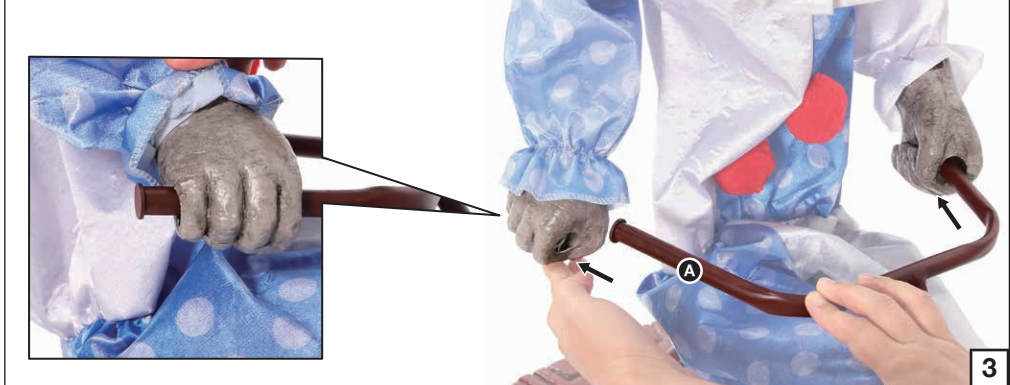
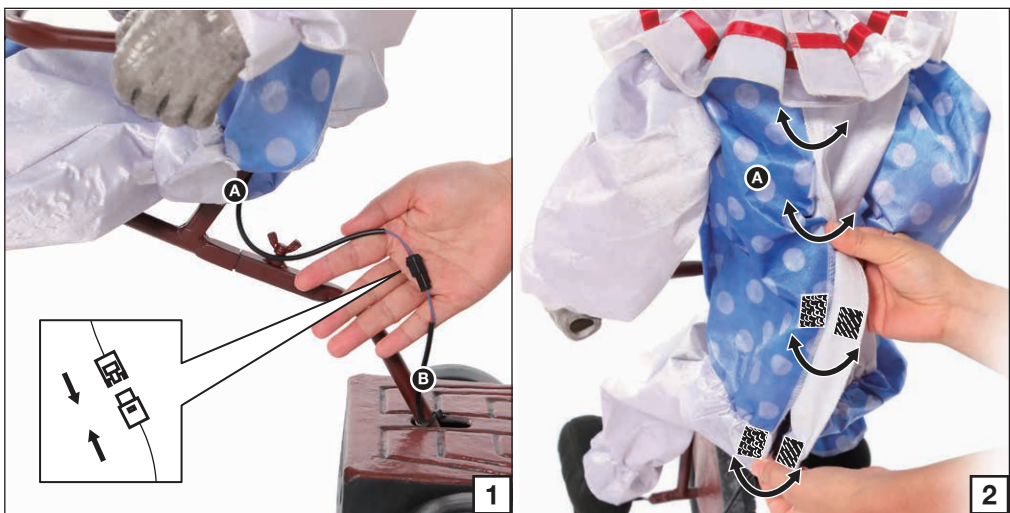


STEP 2

Attach the upper portion of the (A) Clown to the tricycle portion using the quick connect push button and pre-drilled hole as shown in Figure 1.

Then slide the pole at the back of the (A) Clown into the pole housing on the (B) Tricycle Motor.

Rotate the thumbscrew clockwise until its snug as shown in Figure 2. Do not overtighten the screw.



STEP 3

Connect the cable available from the (A) Clown to the corresponding cable from the (B) Tricycle Motor as shown in Figure 1.

Close the back of the costume using the hook and loop closures as shown in Figure 2.

Then slide the hands of the (A) Clown onto the handlebars of the tricycle as shown in Figure 3.



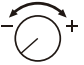
STEP 4

Your Tricycle Clown is now fully assembled. Plug in and turn on to let the fun begin!

OPERATION INSTRUCTIONS:

1. Refer to Assembly Instructions Step 1 for Battery Replacement and adjust the settings on the Function Control Box, located on the (B) Tricycle Motor, as desired.

2. Settings:

On	This switch mode will continuously operate the sounds and animation of the item.
Sensor	This switch mode only activates sounds and animation when the sensor is triggered. The item will operate for one audio cycle with each sensor activation.
OFF/Try Me	This switch mode allows the item to be activated only if triggered by using a Step Pad or Try Me Button (Not included). The item will operate for one audio cycle with each Try Me activation.
	Raise or lower the volume using the volume control turn dial, turn all the way down to turn the volume off.

Do not mix alkaline, standard (carbon-zinc), or rechargeable (nickel cadmium) batteries. Do not mix old and new batteries. Rechargeable batteries to be removed from the product before being charged. Only batteries of the same or equivalent type as recommended are to be used. Rechargeable batteries are only to be charged under adult supervision. Non-rechargeable batteries are not to be recharged. Batteries are to be inserted with the correct polarity. Remove batteries if consumed or if product is to be left unused for a long time. The supply terminals are not to be short-circuited. Dispose of batteries safely. **DO NOT DISPOSE OF BATTERIES IN FIRE, BATTERIES MAY EXPLODE OR LEAK.**

This device complies with Part 15 of the FCC Rules. Operation is subject to the following two conditions: (1) This device may not cause harmful interference, and (2) this device must accept any interference received, including interference that may cause undesired operation.

CAUTION: Changes or modifications not expressly approved by the party responsible for compliance could void the user's authority to operate the equipment.

NOTE: This equipment has been tested and found to comply with the limits for a Class B digital device, pursuant to Part 15 of the FCC Rules. These limits are designed to provide reasonable protection against harmful interference in a residential installation. This equipment generates, uses and can radiate radio frequency energy and, if not installed and used in accordance with the instructions, may cause harmful interference to radio communications. However, there is no guarantee that interference will not occur in a particular installation. If this equipment does cause harmful interference to radio or television reception, which can be determined by turning the equipment off and on, the user is encouraged to try to correct the interference by one or more of the following measures: Reorient or relocate the receiving antenna, Increase the separation between the equipment and receiver, Connect the equipment into an outlet on a circuit different from that to which the receiver is connected. Consult the dealer or experienced radio/TV technician for help.

