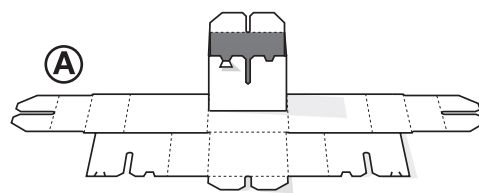
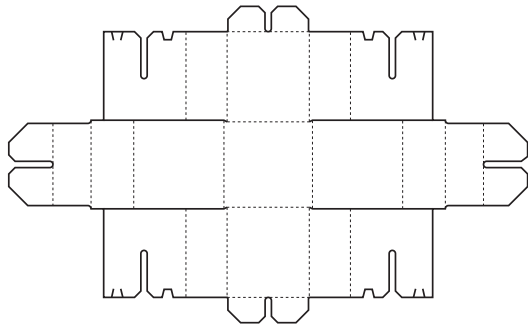


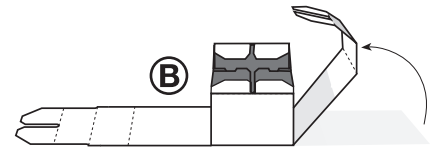
# 60/4000 Colored Cardboard Blocks

## Instructions:

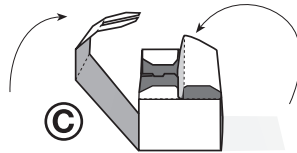
### RED, GREEN BLUE AND PURPLE BLOCKS



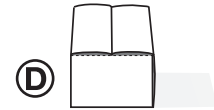
**A** Build the frame first. Lock into place.



**B** Tuck flap into center of the frame. You can see there are no tabs to worry about.

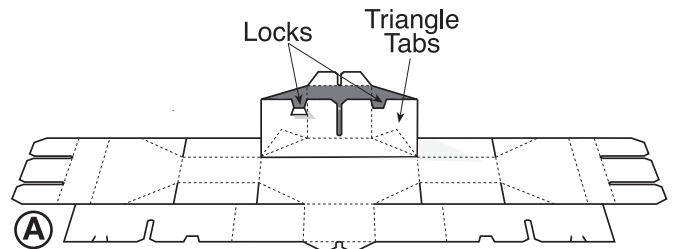
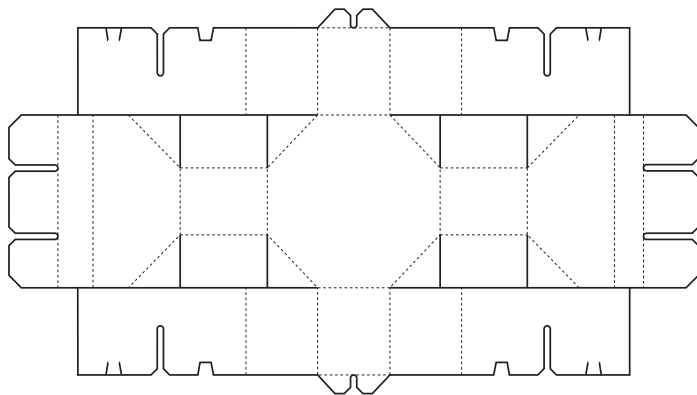


**C** Tuck in last flap into block.

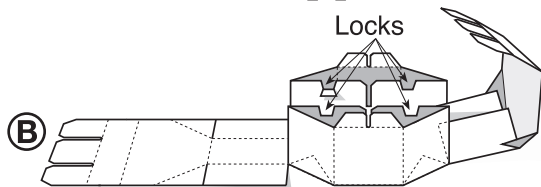


**D** Block is complete.

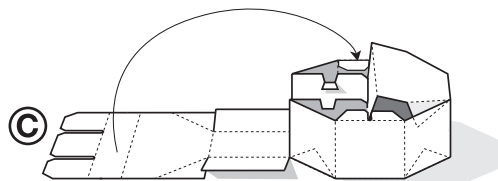
### YELLOW BLOCKS



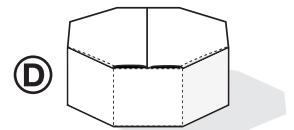
**A** Fold up outside edges to form the first inner frame. Be careful to tuck the 2 triangle tabs inside of each frame. Push down locking tabs to hold the frame in place. Do the same thing with the opposite side.



**B** After the second frame has been built, fold up the side flaps which will tuck into the center of the frames. The triangle tabs must tuck into the frame.

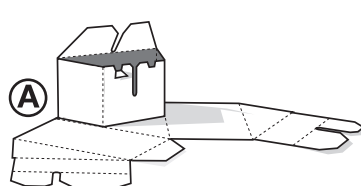
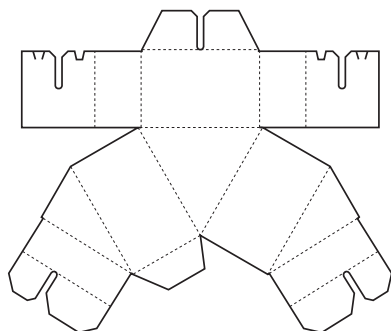


**C** Repeat with the other side. Fold up and tuck into center of the block.

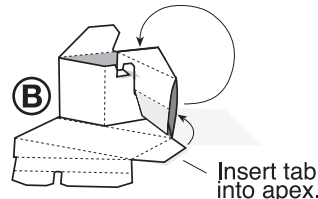


**D** Block is complete.

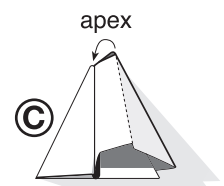
### ORANGE BLOCKS



**A** Build the frame first and lock it into position.



**B** Fold up side flaps and tuck into position. There is only one tab on this block, at the apex.



**C** After inserting tab into apex, tuck final flap into center of the block.