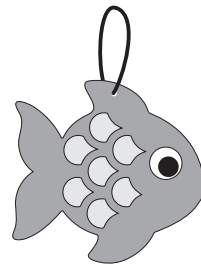
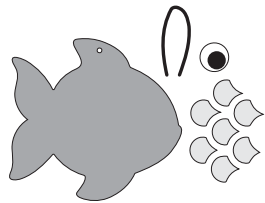


14384142 EMBELLISHED SEA LIFE MAGIC SCRATCH CRAFT KIT

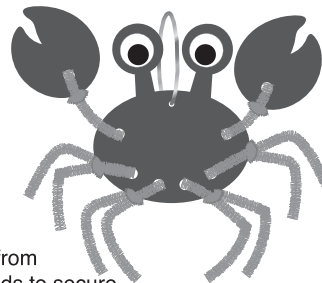
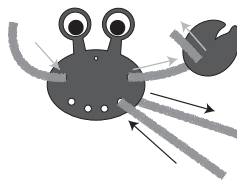
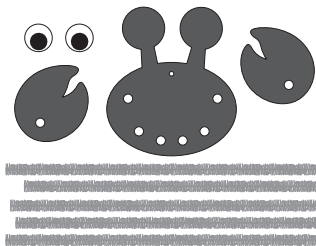
Instructions:

Thread the cording through the hole(s) and tie the ends to create the hanger.

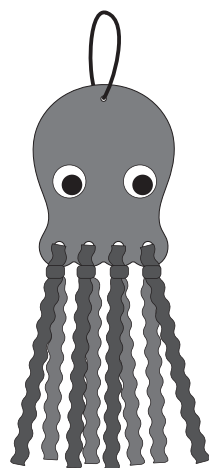
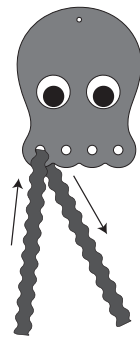
Using the picture as a guide, adhere the pieces together as shown.



Attach the eye then add the scales.
Decorate as desired with the scratch tool.



Attach the eyes. Insert 1 chenille stem through the top two holes from the back side to make the arms. Attach the claws and twist the ends to secure. Attach the remaining chenille stems through the lower holes to create the legs. Twist together to secure. Decorate as desired with the scratch tool.



Attach the eyes. Attach the strips through the holes and tie a knot to secure to create legs. Decorate as desired with the scratch tool.

© OTC



Share your fun!

Tag your photo with **#orientaltrading** on social media!