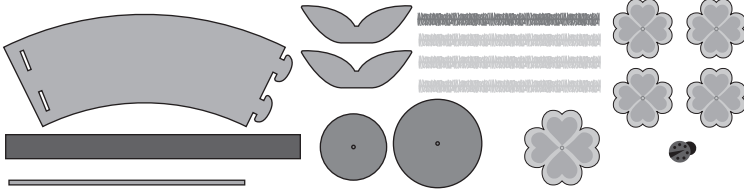


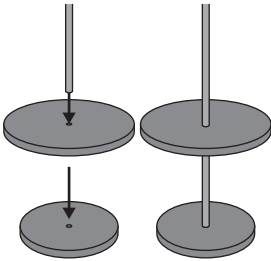
14352610 FOUR LEAF CLOVER FLOWERPOT CRAFT KIT

Instructions:

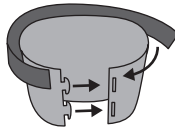
Using the picture as a guide, assemble the craft as shown.



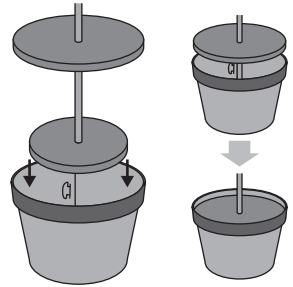
1. Insert the dowel into the holes in the foam circles.



2. Assemble the foam pot as shown.

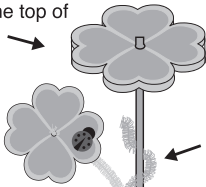


3. Insert the dowel and foam structure into the assembled foam pot.



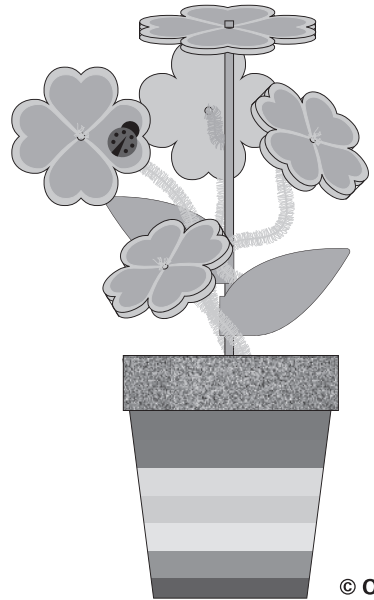
4. Assemble the leaves and clover.

Attach the larger clover to the top of the dowel.



Twist the chenille stems around the dowel, and attach clovers to the end.

Fold leaves onto the dowel.



© OTC