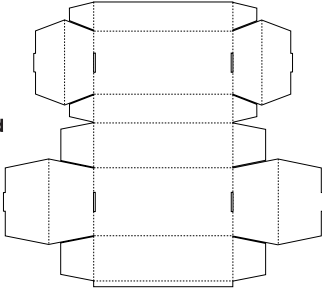


Treasure Chest Instructions

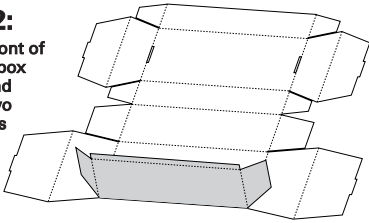
STEP 1:

Lay the Treasure Chest Box flat on a table surface with the printed side facing down.



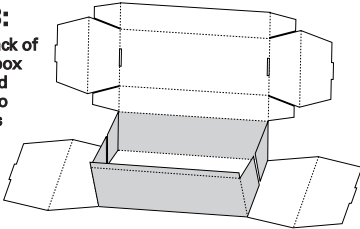
STEP 2:

Fold the front of the lower box upward and fold the two side panels back.



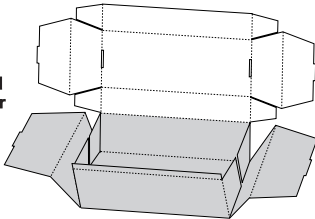
STEP 3:

Fold the back of the lower box upward and fold the two side panels forward.



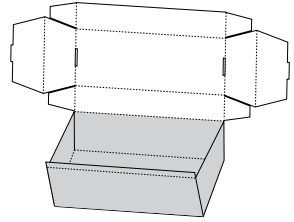
STEP 4:

Fold the left and right side panels up and over the lower box sides.



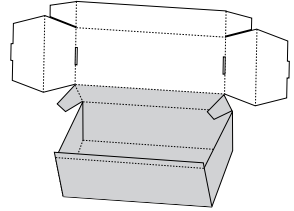
STEP 5:

Lock the left and right side panels into the open holes in the lower box bottom.



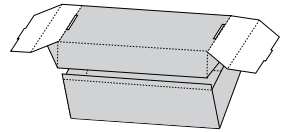
STEP 6:

Fold the back of the upper box forward and fold the two side panels forward as well.



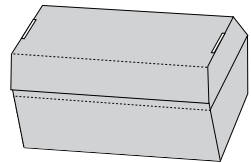
STEP 7:

Fold the top and front of the upper box downward and fold the two front side panels back.



STEP 8:

Fold the left and right side panels down and under the upper box sides. Lock the left and right side panels into the open holes at the top of the upper box.



Your Treasure Chest is Finished!