

14226601 Fountain Stand-Up Instructions

CONTENT INCLUDED:

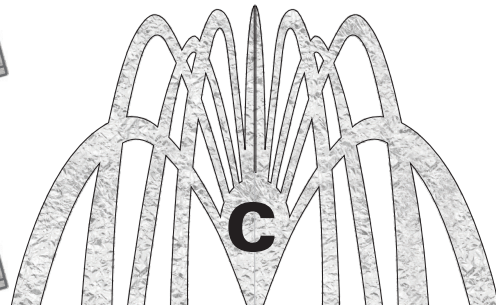
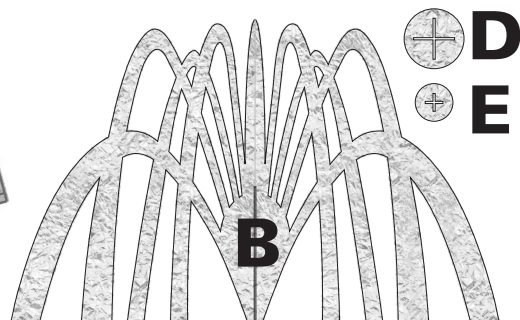
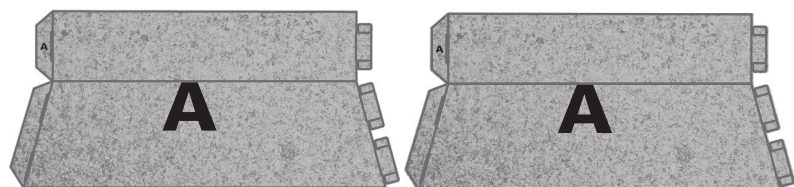
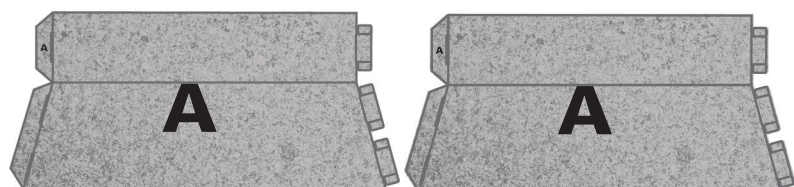
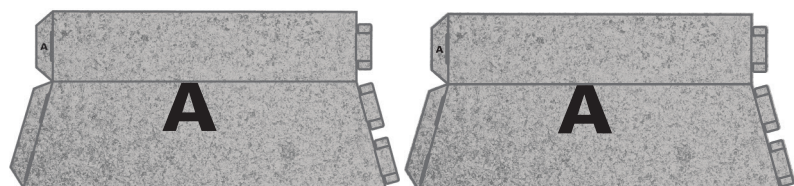
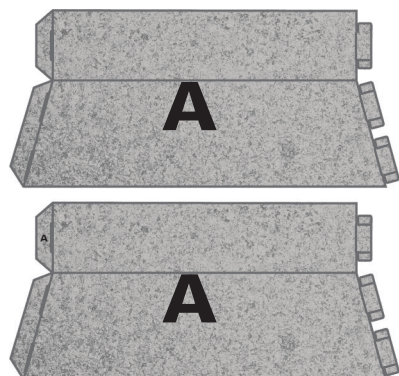
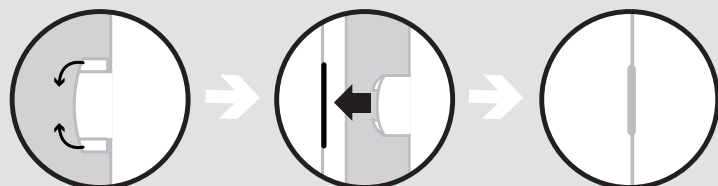
- Qty 8 A) Fountain Base
- Qty 1 B) Top Fountain
- Qty 1 C) Bottom Fountain
- Qty 1 D) Fountain Brace Bottom
- Qty 1 E) Fountain Brace Top

BEFORE YOU BEGIN ASSEMBLY:

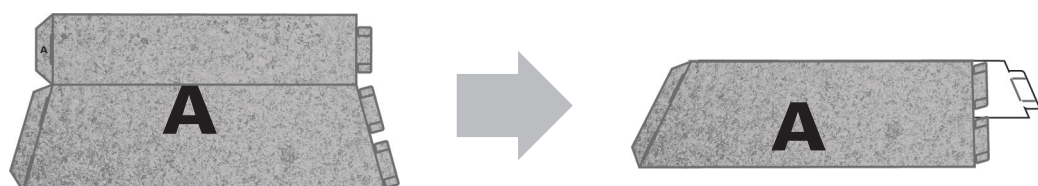
- Check that all materials are included in your kit.
- Please read through the instructions before you begin assembly.
- Make sure that your work area is spacious enough to assemble the item.
- Assembly time should be about 30 minutes for two people.

HELPFUL TIPS:

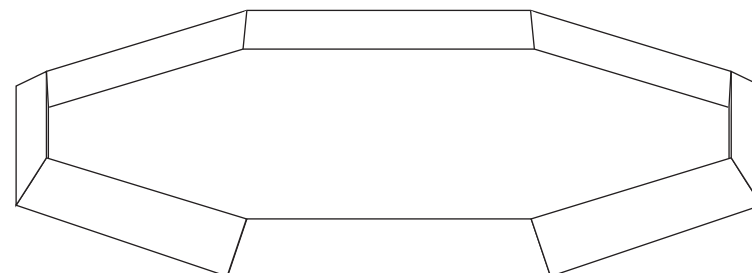
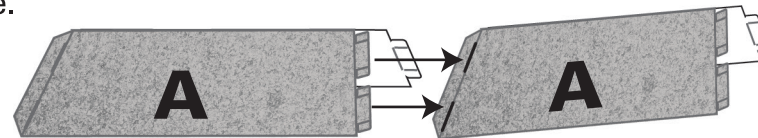
- When folding the pieces make sure the print is facing the same direction.
- Follow the diagrams below to insert the tabs into the tab openings.



STEP 1:
Fold all 8 of piece A along the score lines.

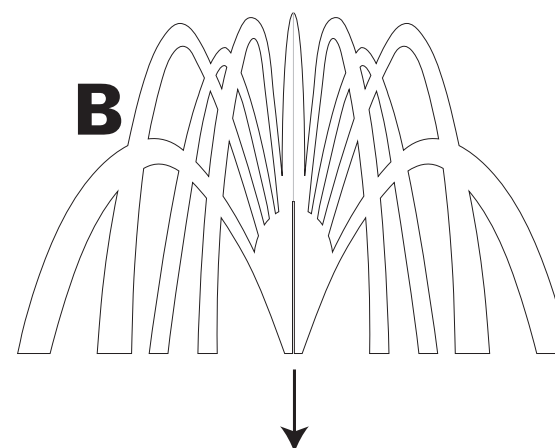


STEP 2:
Attach all 8 of piece A by inserting the tabs into the tab openings to create a large octagonal shape.

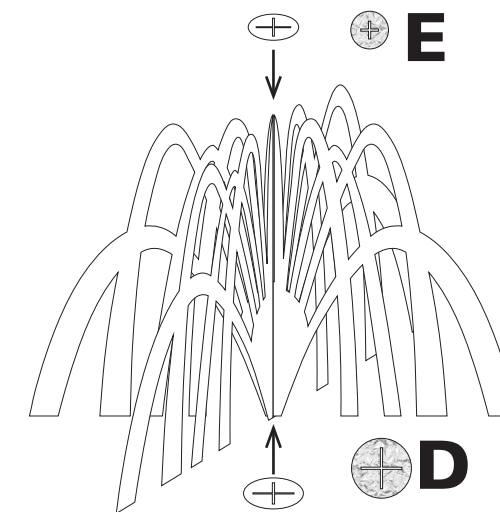


STEP 3:
Slot piece B and piece C together to create the fountain. Place the assembled fountain in the middle of the assembled fountain base.

Inflate the balloons and place in the inside of the fountain base.



STEP 4:
Slide piece D over the cross section of A and B at the base. Slide piece E over the cross section of A and B at the top.



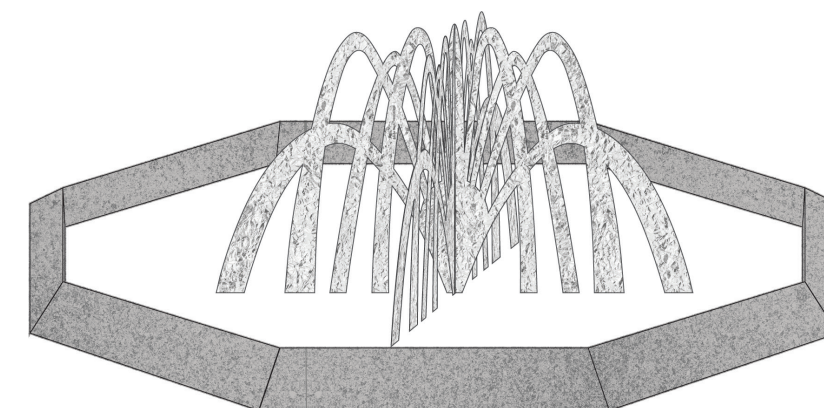
+

cross section view

Your Fountain is finished!

Have fun with your fountain!

Use it as a display piece or as part of a scene.



WARNING!!!
THIS STAND-UP IS NOT CAPABLE OF SUSTAINING HEAVY WEIGHTS.

© OTC

Share your fun! Tag your photo with #orientaltrading on social media!