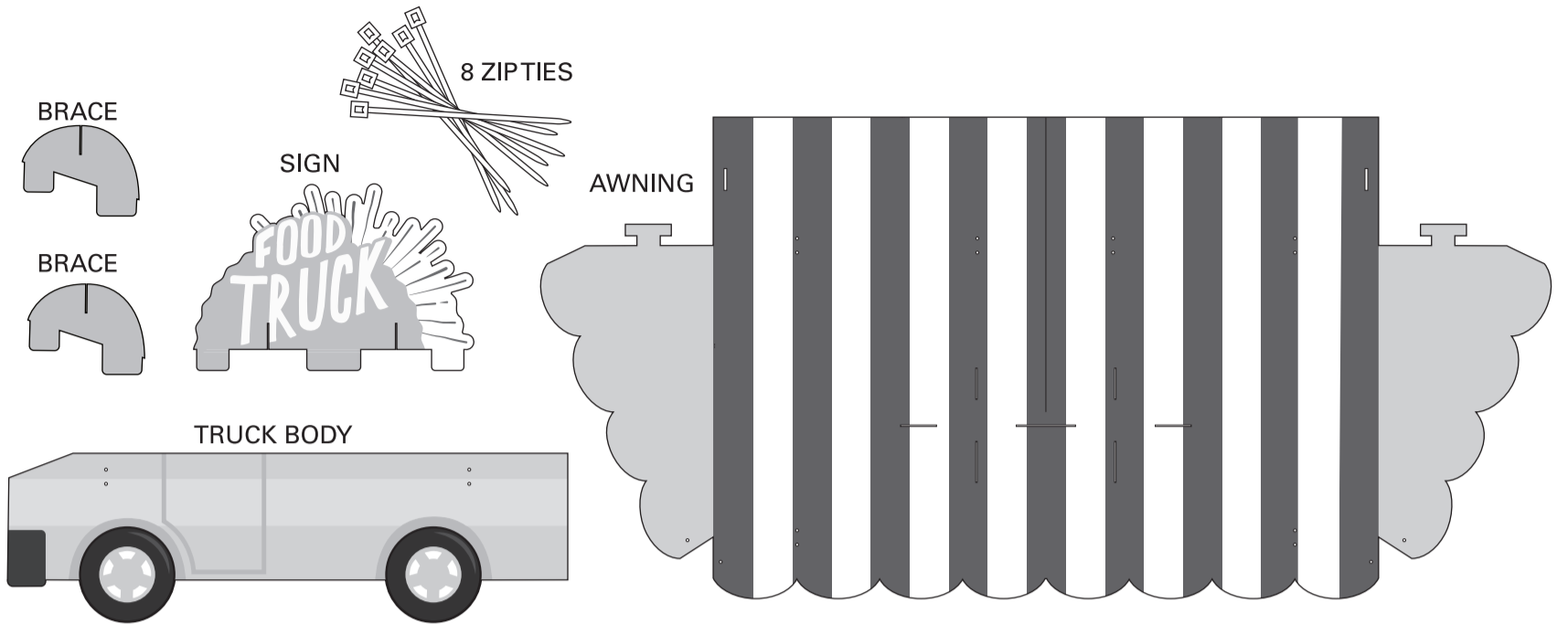
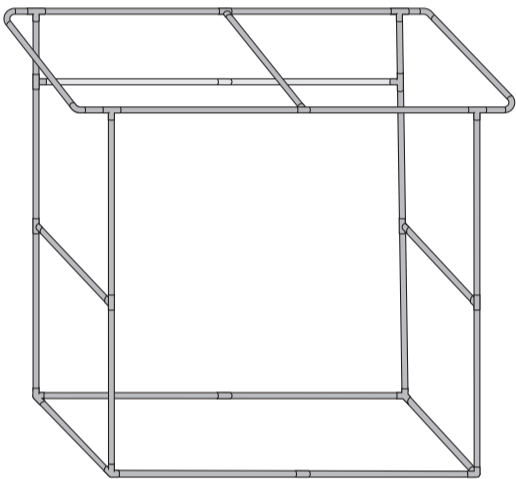


14096544 FOOD TRUCK TABLE TOP KIT

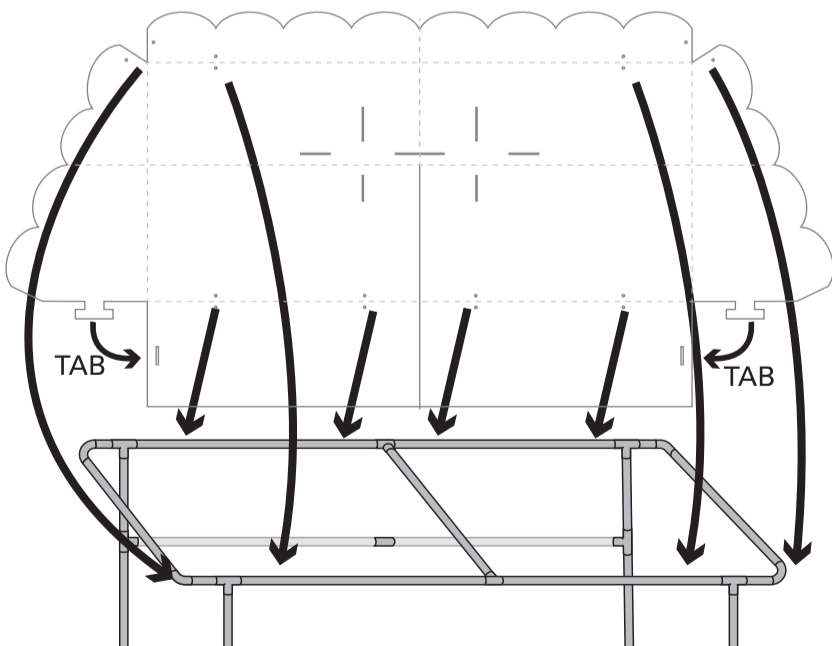


STEP 1:
Build the frame as shown. (Packaged in separate box.)



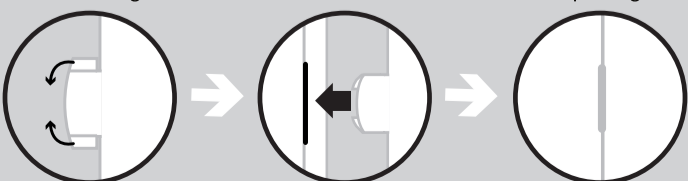
STEP 2:
Place the awning onto the frame. Insert the tabs on the back of the awning to secure the shape.

Thread each zip tie through the holes on the awning to hold the awning into place. If desired, trim excess materials. (scissors not included.)



HELPFUL TIPS:

• Follow the diagrams below to insert the tabs into the tab openings.



STEP 3:
Insert the sign braces into the awning. Slot together the sign into the braces and slits on awning.



At the base of the frame, zip tie the truck body into place.

Food Truck Table Top Kit is finished!
Have fun! Use it as a display piece or as part of a scene.



TABLE IS NOT INCLUDED

WARNING!!!
THIS ITEM IS NOT CAPABLE OF SUSTAINING HEAVY WEIGHTS.

© OTC