

13963809 Standup 3D Birthday Cake Instructions

COMPONENTS LIST


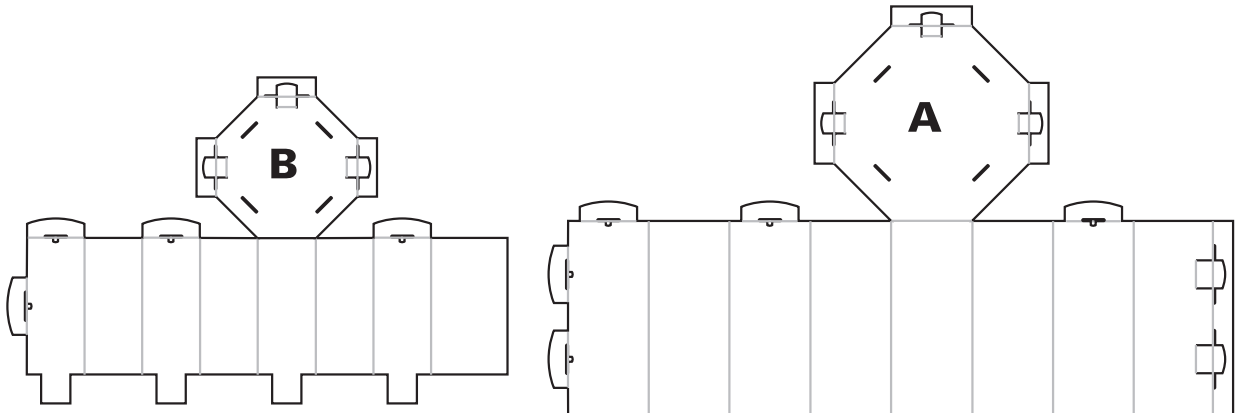
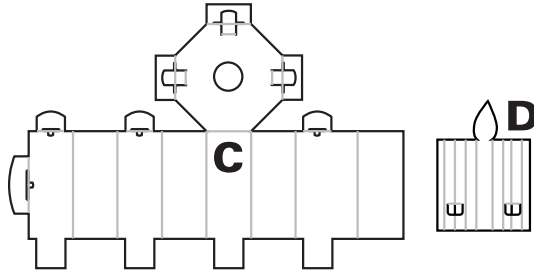
- QTY. 1 A) BASE
- QTY. 1 B) CENTER
- QTY. 1 C) TOP
- QTY. 1 D) CANDLE

BEFORE YOU BEGIN ASSEMBLY:

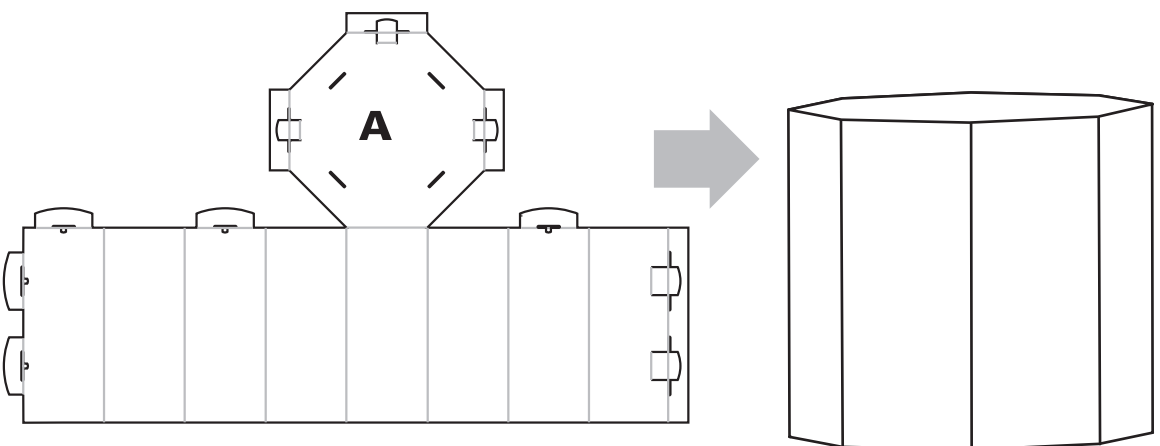
- Check that all materials are included in your kit.
- Please read through the instructions before you begin assembly.
- Make sure that your work area is spacious enough to assemble the item.
- Assembly time should be about 30 minutes for two people.

HELPFUL TIPS:

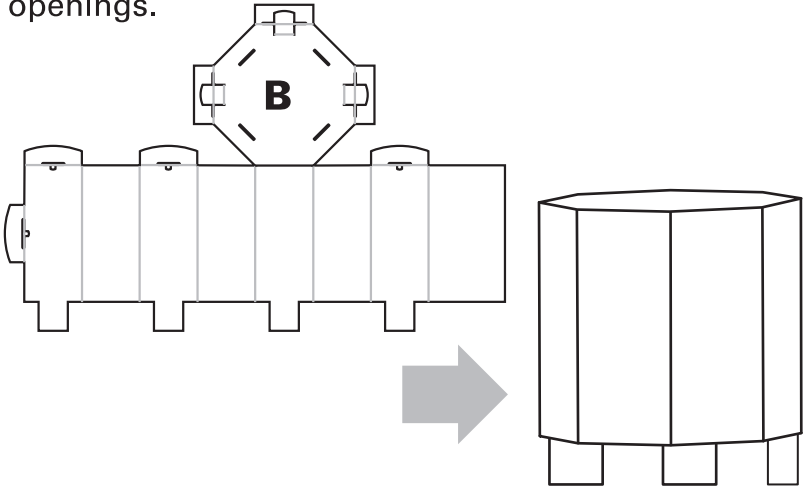
- When folding the pieces make sure the print is facing outward.
- Follow the diagram below to insert and close the tab openings.

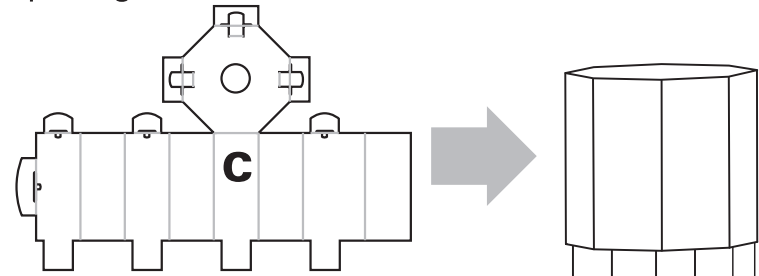
STEP 1:
Fold Piece A along the score lines to form a box shape with the printed side facing out. Fasten the box shape securely by inserting all tabs into the slot openings.



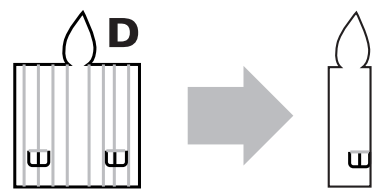
STEP 2:
Fold Piece B along the score lines to form a box shape with the printed side facing out. Fasten the box shape securely by inserting all tabs into the slot openings.



STEP 3:
Fold Piece C along the score lines to form a box shape with the printed side facing out. Fasten the box shape securely by inserting all tabs into the slot openings.

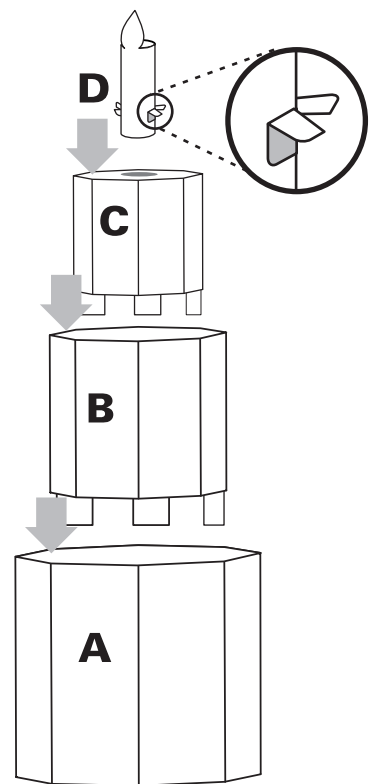


STEP 4:
Fold Piece D along the score lines to form a candle shape with the printed side facing out.



STEP 5:
Stack Piece B on top of Piece A by inserting all four of the bottom tabs on Piece B into the four slots at the top of Piece A. Repeat for Piece C on top of Piece B.

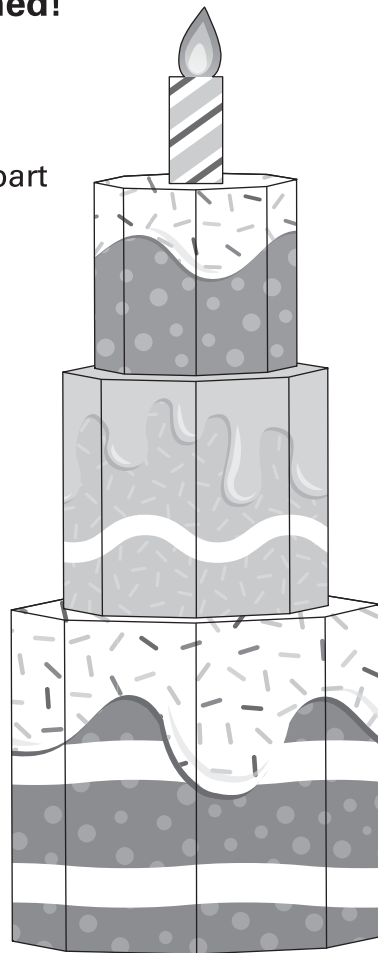
Push the tabs on the side of Piece D out, then insert Piece D into the hole on top of Piece C. The tabs will stop the piece from going further.



Your cake standup is finished!

Have fun with your new cake standup!

Use it as a display piece or as part of a scene.



WARNING!!!
THIS ITEM IS NOT CAPABLE OF SUSTAINING HEAVY WEIGHTS.