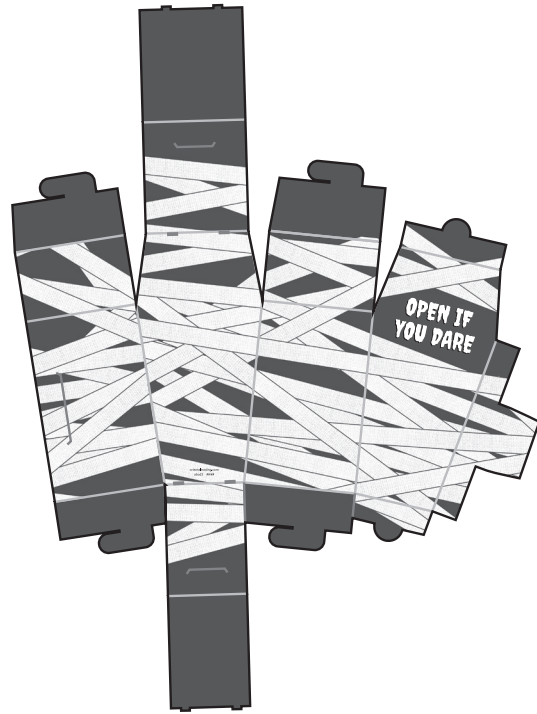
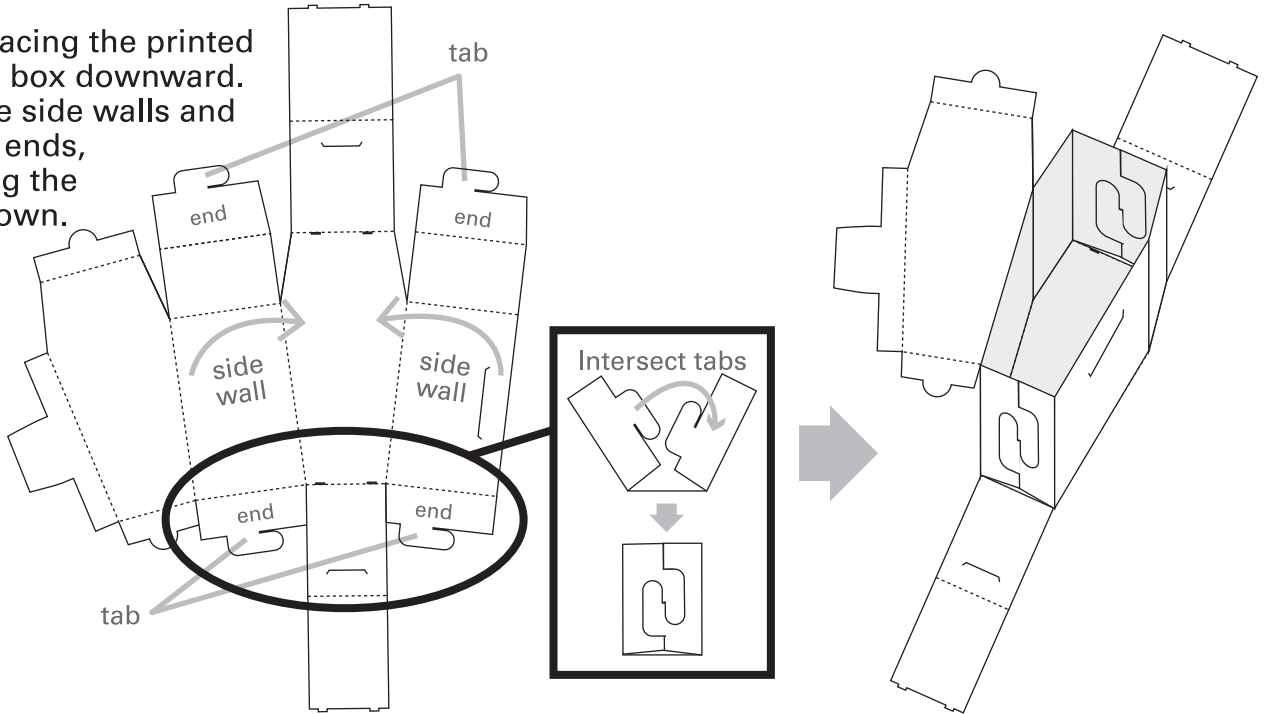


13952278 Coffin Favor Box Assembly Instructions



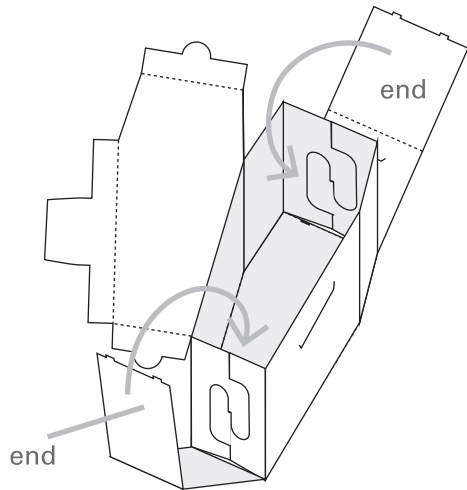
STEP 1:

Start by placing the printed side of the box downward. Fold up the side walls and fold in the ends, intersecting the tabs as shown.



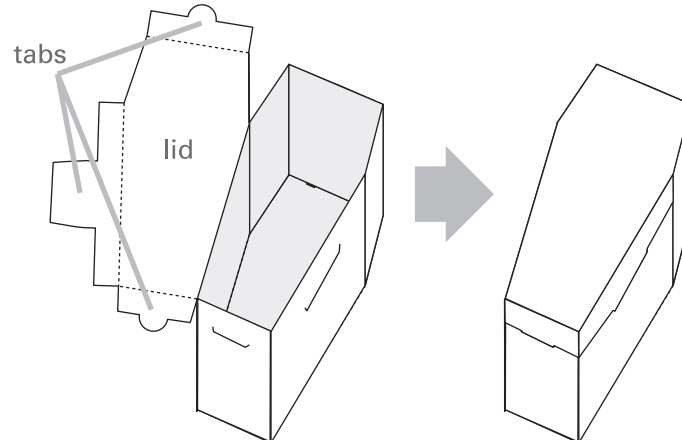
STEP 2:

Taking each end, fold up and over the intersected tabs.



STEP 3:

To close the box, fold over the lid and insert the tabs into the slits on the side of the box.



© OTC



Share your fun!

Tag your photo with **#orientaltrading** on Instagram or upload your photos at **orientaltrading.com/sharefun**.