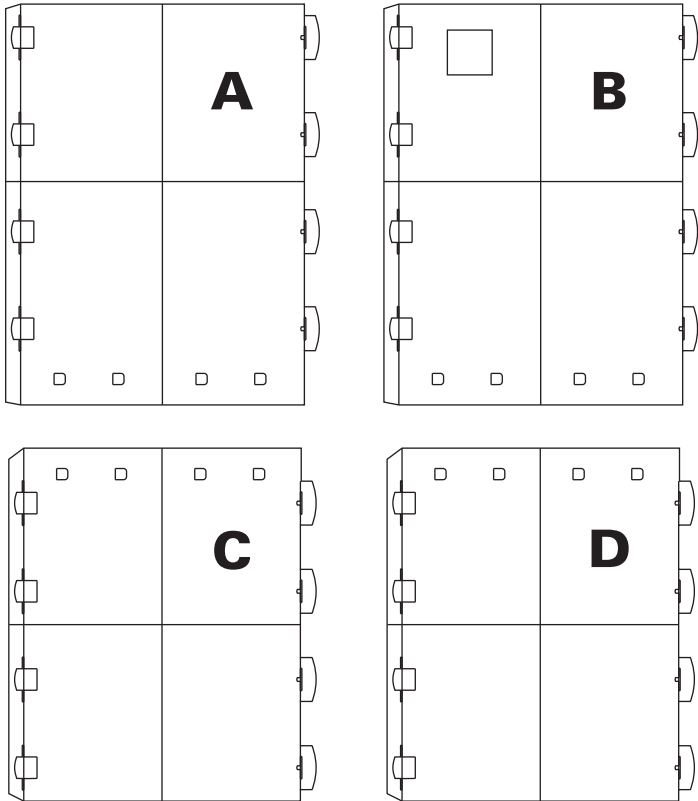


13934704 Superhero Male Column Instructions

©2019 Oriental Trading Company, Inc.
OrientalTrading.com (800) 228-2269

BEFORE YOU BEGIN ASSEMBLY:

- Check that all materials are included in your kit.
- Please read through the instructions before you begin assembly.
- Make sure that your work area is spacious enough to assemble the item.
- Assembly time should be about 45 minutes for two people.

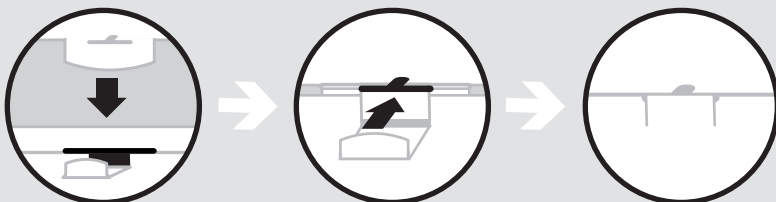


COMPONENTS INCLUDED:

- QTY 1 A) POSTTOP 1
- QTY 1 B) POSTTOP 2
- QTY 1 C) POST BOTTOM 1
- QTY 1 D) POST BOTTOM 2

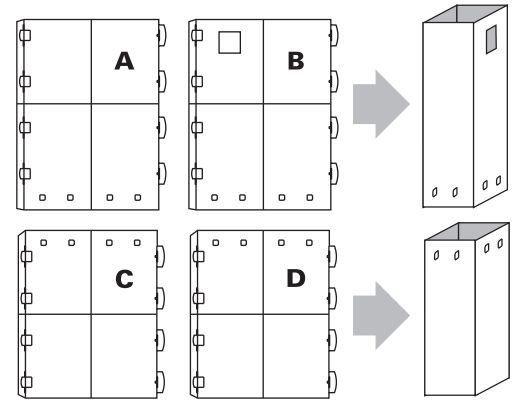
HELPFUL TIPS:

- When folding the pieces make sure the print is facing outward.
- Follow the diagram below to insert and close the tab openings.



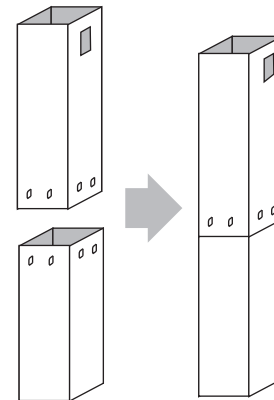
STEP 1:

Fold A and B pieces into box shape and secure each closed with the side tabs. Repeat with C and D pieces.



STEP 2:

To create a column, line up the seams and insert A and B into C and D.



Your Superhero Male Column is finished!

Enjoy your new column!
Use it as a display piece
or as part of a larger scene.

WARNING!!!
THE COLUMN IS NOT
CAPABLE OF SUSTAINING
HEAVY WEIGHTS.

