

13901821 Bier Garten Archway Instructions

©2018 Oriental Trading Company, Inc.
 OrientalTrading.com (800) 228-2269

COMPONENTS LIST

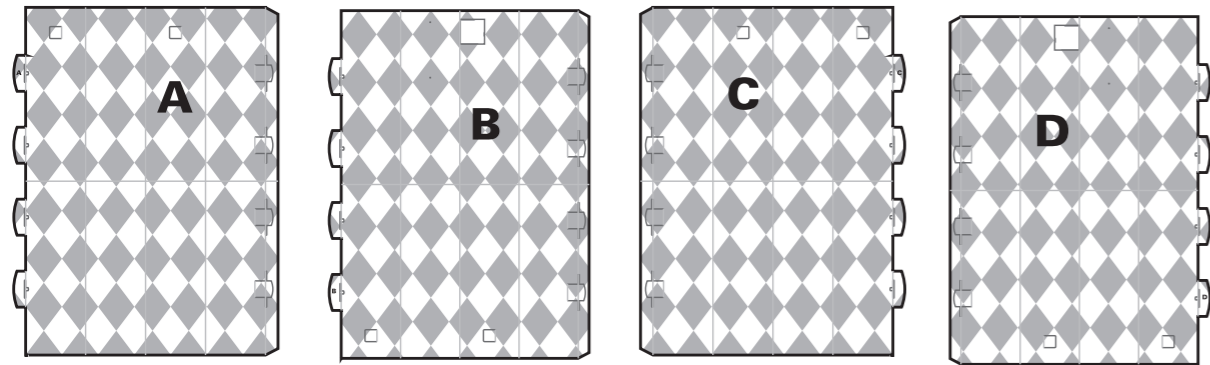
- QTY. 1 A) BOTTOM POST LEFT
- QTY. 1 B) TOP POST LEFT
- QTY. 1 C) BOTTOM POST RIGHT
- QTY. 1 D) TOP POST RIGHT
- QTY. 1 E) BEAM
- QTY. 1 F) BANNER
- QTY. 8 G) CLEAR PLASTIC PLUG

BEFORE YOU BEGIN ASSEMBLY:

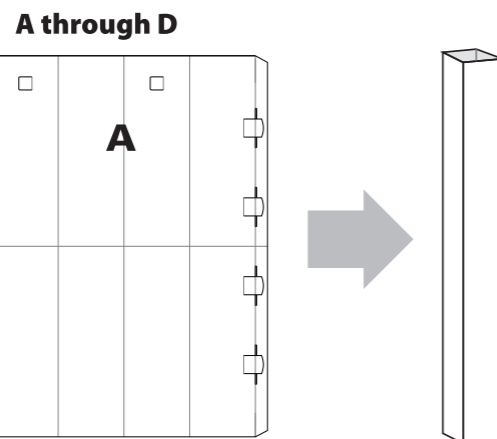
- Check that all materials are included in your kit.
- Please read through the instructions before you begin assembly.
- Make sure that your work area is spacious enough to assemble the item.
- Assembly time should be about 30 minutes for two people.

HELPFUL TIPS:

- When folding the pieces make sure the print is facing outward.
- Follow the diagram below to insert and close the tab openings.



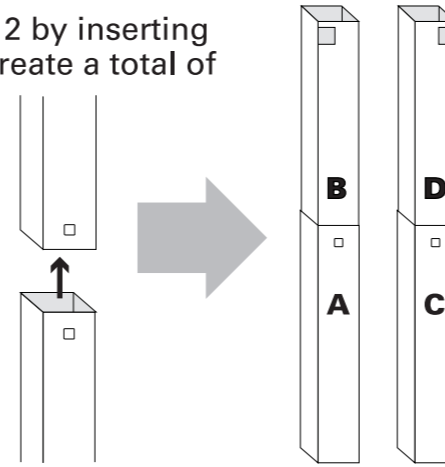
STEP 1:
 Fold pieces A through D along the score lines and form into a square tube. Secure the tabs.



STEP 2:

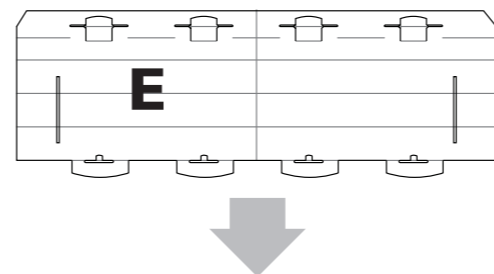
Slide B into A to make one post, lining up the seams and the square side tabs. Press the side tabs inward to secure the post together.

Repeat Step 2 by inserting D into C to create a total of two posts.



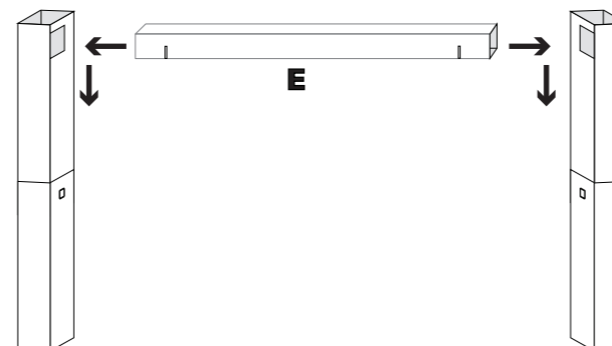
STEP 3:

Fold E along the score lines and form a square tube. Secure the tabs together.



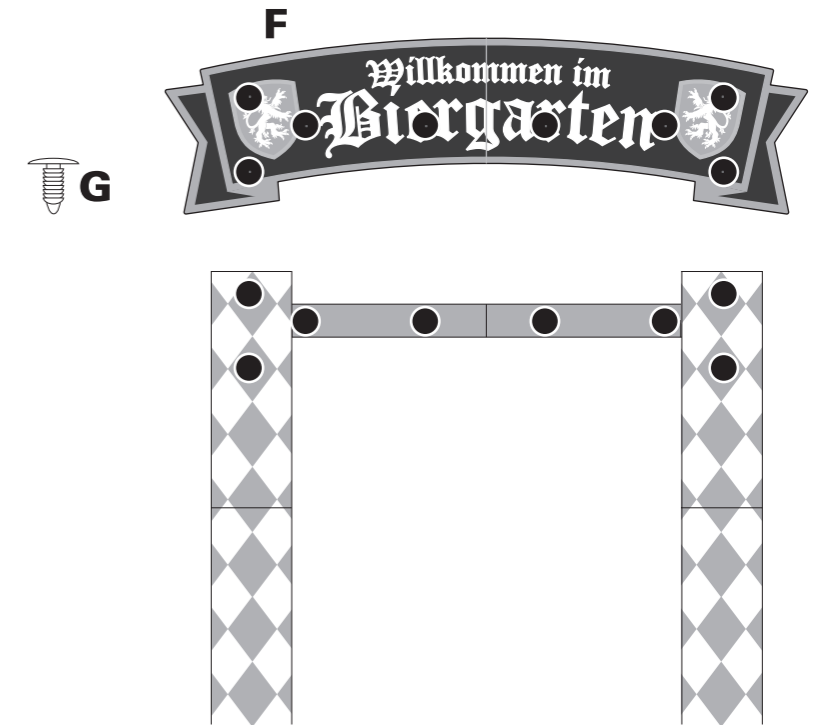
STEP 4:

Take E and with the slits facing downward, insert E into the square holes on the side of each post to create a frame. Once inserted press downward to secure the beam into place.



STEP 5:

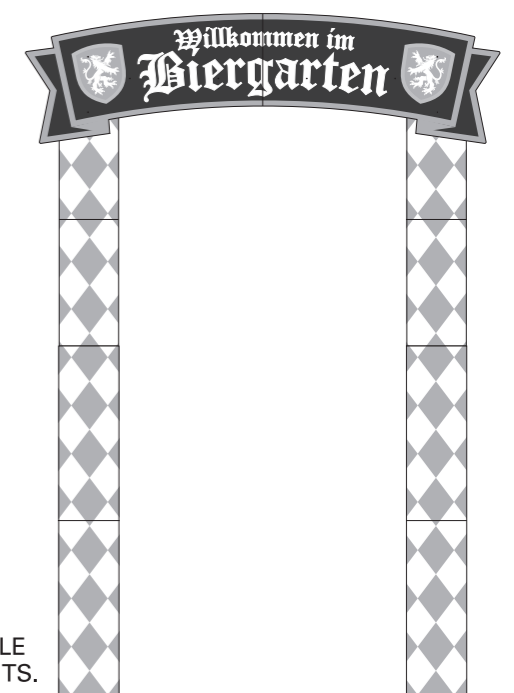
Using the Plastic Plugs (G) attach the Banner (F) to the top of the archway frame where shown.



Your Bier Garten Archway is finished!

Have fun with your new arch!

Use it as a display piece or as part of a scene.



WARNING!!!
 THIS STAND-UP IS NOT CAPABLE OF SUSTAINING HEAVY WEIGHTS.