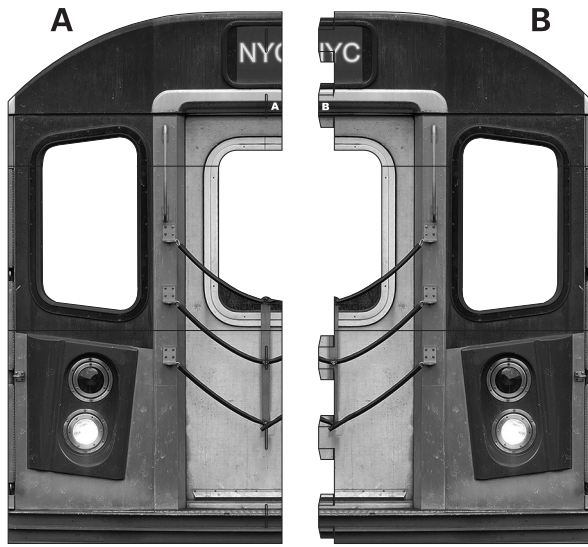


13829784 New York Subway Cardboard Stand-Up Instructions

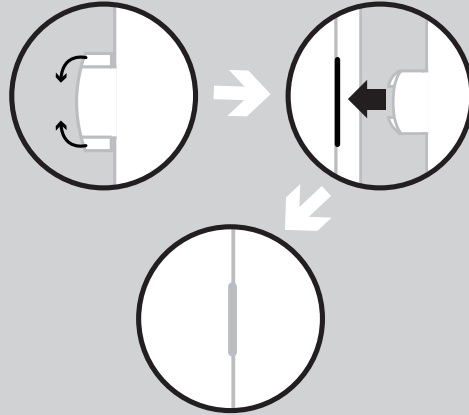
©2018 Oriental Trading Company, Inc.
OrientalTrading.com (800)875-8480

COMPONENTS INCLUDED



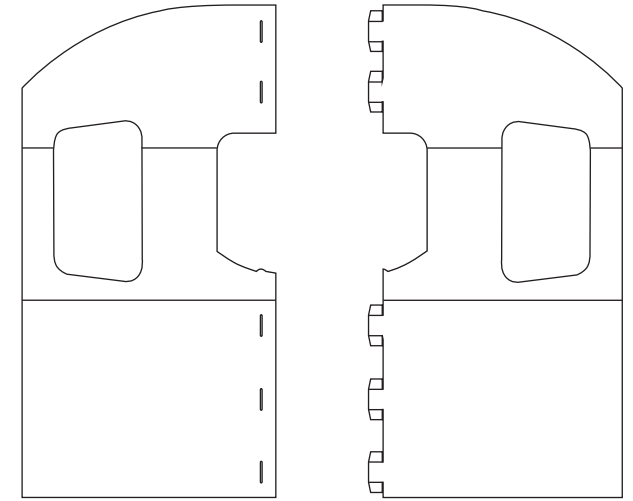
HELPFUL TIPS:

- When folding the pieces make sure the print is facing the same direction.
- Follow the diagrams below to insert the tabs into the tab openings.



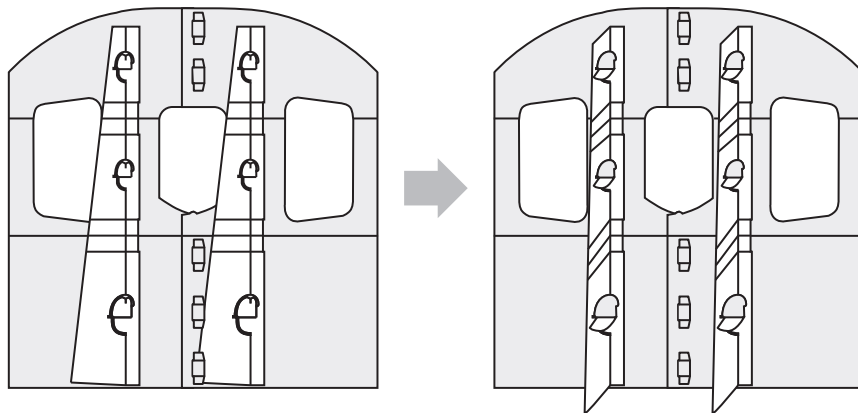
STEP 1:

Using the tabs, attach A to B to form the front of the subway.



STEP 2:

Fold out the support stands on the back and lock into place with the notches.



**Your New York Subway
Cardboard Stand-Up
is finished!**

Have fun!

Use it as a display
piece or as part
of a scene.