

13820498 Graffiti Concrete Barricade Stand-Up Instructions

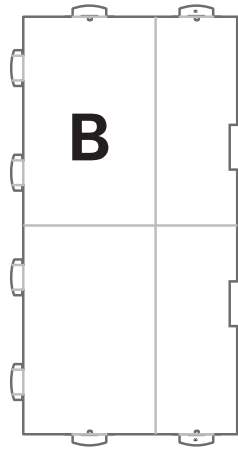
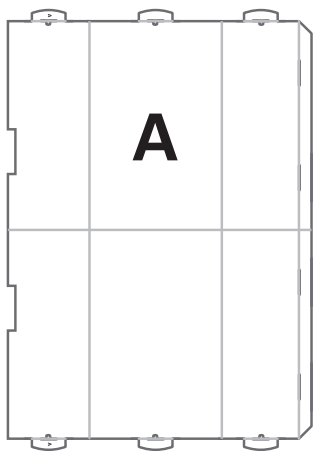
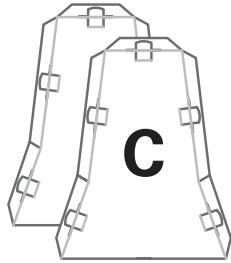
©2018 Oriental Trading Company, Inc.
OrientalTrading.com (800)-228-2269

BEFORE YOU BEGIN ASSEMBLY:

- Check that all materials are included in your kit.
- Please read through the instructions before you begin assembly.
- Make sure that your work area is spacious enough to assemble the item.
- Assembly time should be about 30 minutes for 1-2 people.

COMPONENTS INCLUDED

- QTY. 1 A) PANEL A
- QTY. 1 B) PANEL B
- QTY. 2 C) SIDE PANEL



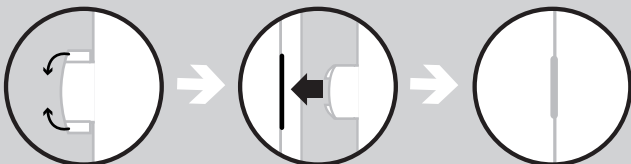
HELPFUL TIPS:

- When folding the pieces make sure the print is facing outward.
- Follow the diagram below to insert and close the tab openings.



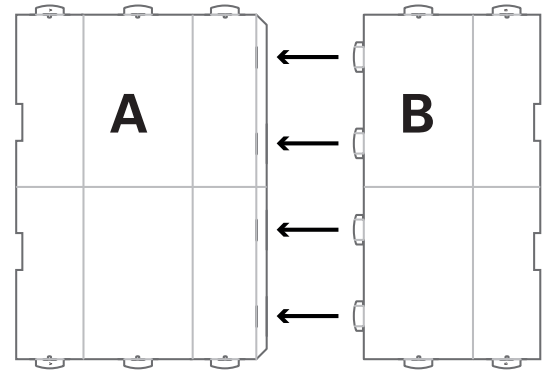
HELPFUL TIPS:

- When folding the pieces make sure the print is facing outward.
- Follow the diagrams below to insert the tabs into the tab openings.



STEP 1:

Attach A and B at the top with the tabs as shown.

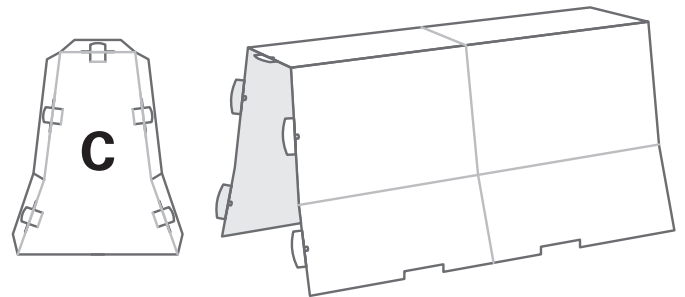


STEP 2:

Fold the assembled piece in Step 1 as shown.

Attach one C piece to one side of the form.

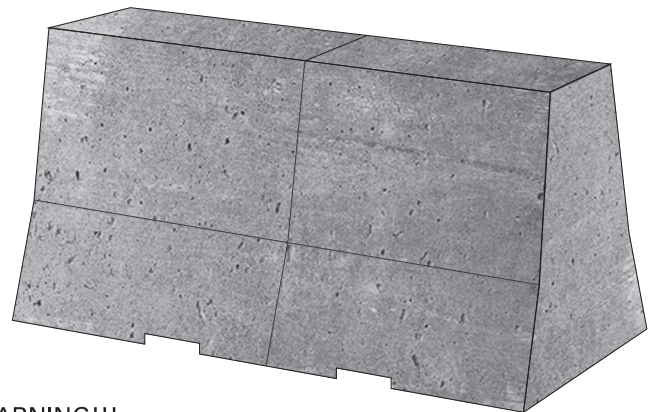
Repeat on the other side with the remaining C piece.



Your Barricade is finished!

Have fun!

Use it as a display piece or as part of a scene.



WARNING!!!
THE ITEM IS NOT CAPABLE OF
SUSTAINING HEAVY WEIGHTS.