

13820476 Graffiti Concrete Pillar Instructions

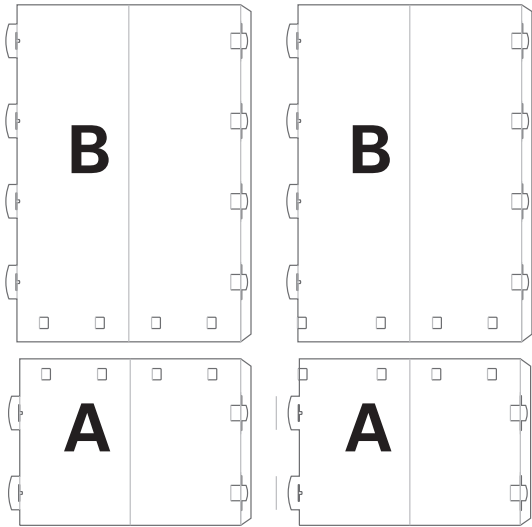
©2018 Oriental Trading Company, Inc.

OrientalTrading.com (800)-228-2269

COMPONENTS INCLUDED

QTY. 2 A) PILLAR BASE

QTY. 2 B) PILLAR TOP

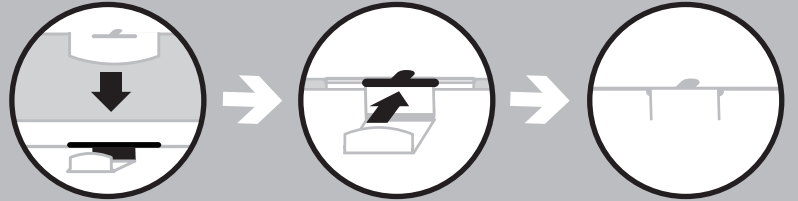


BEFORE YOU BEGIN ASSEMBLY:

- Check that all materials are included in your kit.
- Please read through the instructions before you begin assembly.
- Make sure that your work area is spacious enough to assemble the item.
- Assembly time should be about 30 minutes for two people.

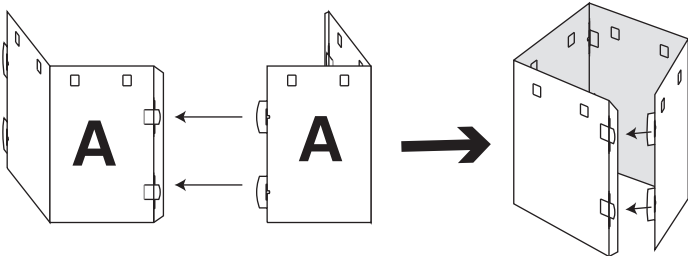
HELPFUL TIPS:

- When folding the pieces make sure the print is facing outward.
- Follow the diagram below to insert and close the tab openings.



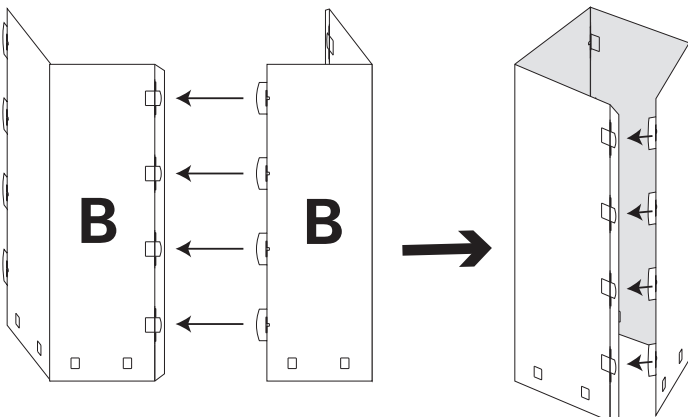
STEP 1:

Connect the two A pieces together to make a box shape by inserting the tabs.



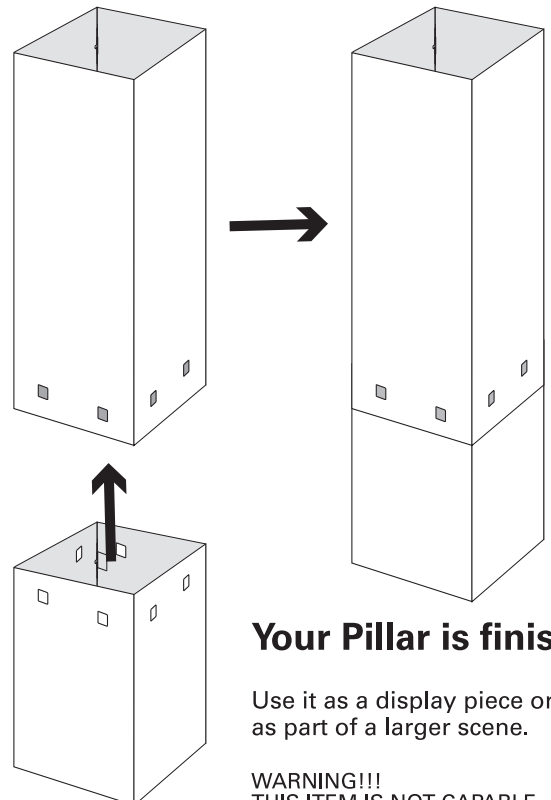
STEP 2:

Connect the two B pieces together to make a box shape by inserting the tabs.



STEP 3:

Insert the shorter piece into the larger piece making sure to line up the tabs as shown.



Your Pillar is finished!

Use it as a display piece or as part of a larger scene.

WARNING!!!
THIS ITEM IS NOT CAPABLE
OF SUSTAINING HEAVY WEIGHTS.