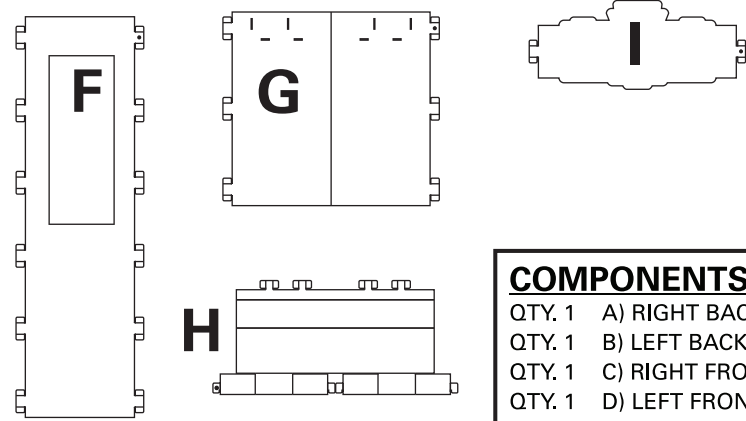
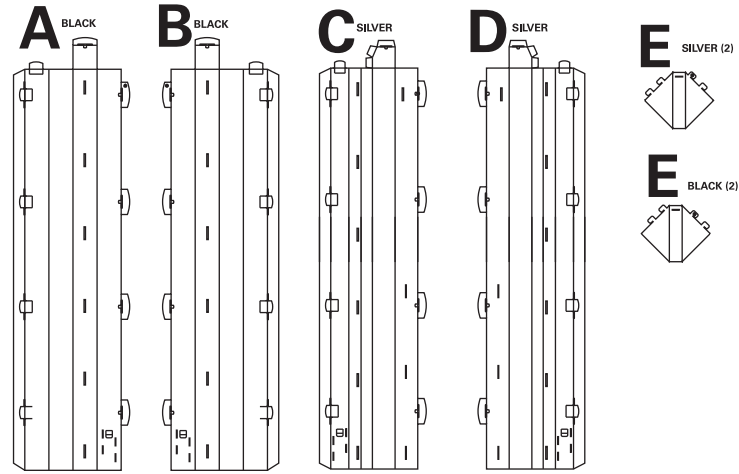


13751716 Movie Theater Ticket Booth Stand-Up Instructions

BEFORE YOU BEGIN ASSEMBLY:

- Check that all materials are included in your kit.
- Please read through the instructions before you begin assembly.
- Make sure that your work area is spacious enough to assemble the item.
- Assembly time should be about 30 minutes for two people.

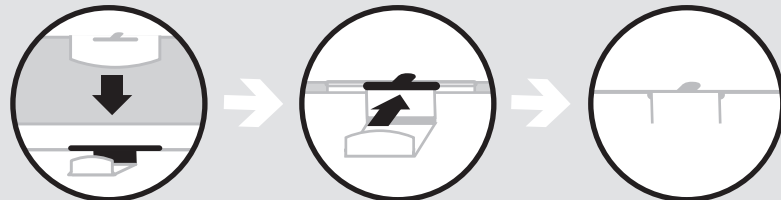


COMPONENTS LIST

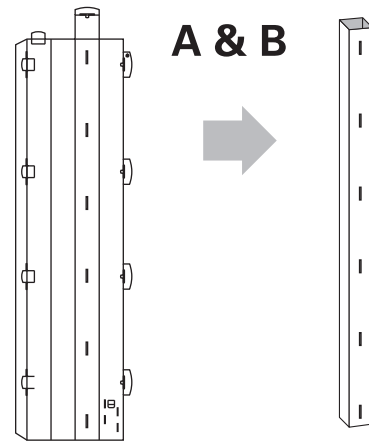
- QTY. 1 A) RIGHT BACK POST
 QTY. 1 B) LEFT BACK POST
 QTY. 1 C) RIGHT FRONT POST
 QTY. 1 D) LEFT FRONT POST
 QTY. 4 E) POST BRACE
 (Two Silver, Two Black)
 QTY. 2 F) SIDE WALL
 QTY. 1 G) CENTER WALL
 QTY. 1 H) SHELF
 QTY. 1 I) TOP BRACE / SIGN

HELPFUL TIPS:

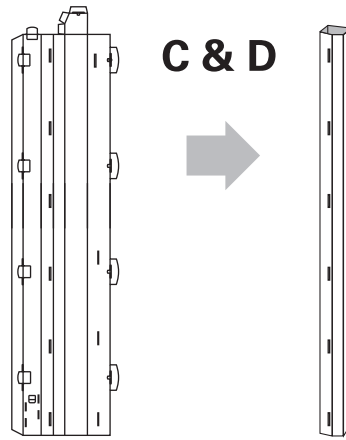
- When folding the pieces make sure the print is facing outward.
- Follow the diagram below to insert and close the tab openings.



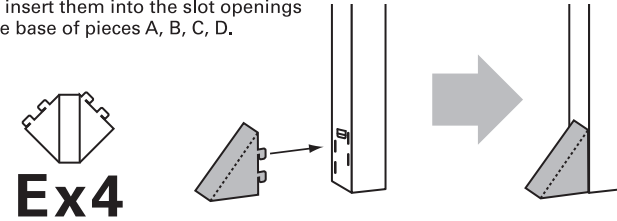
STEP 1:
Fold pieces A and B into a box shape and secure the tabs.



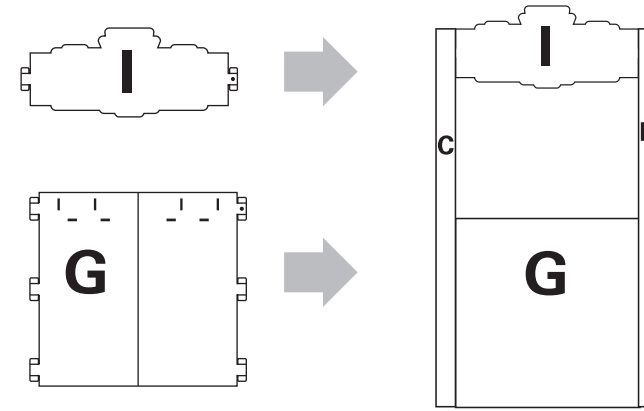
STEP 2:
Fold pieces C and D into a box shape and secure the tabs.



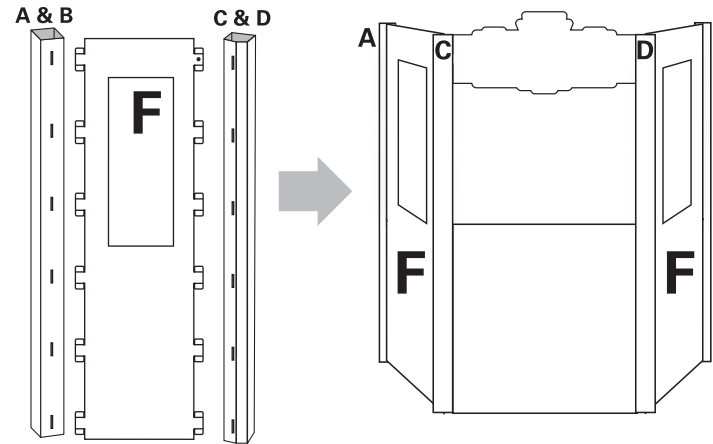
STEP 3:
Fold the piece E along the score lines to form a triangular box shape and then insert them into the slot openings at the base of pieces A, B, C, D.



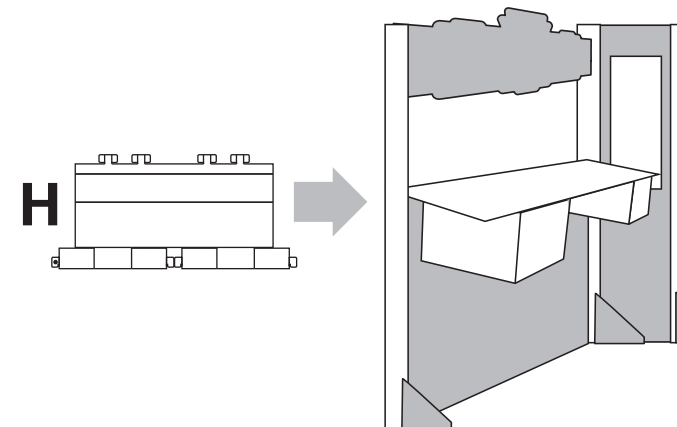
STEP 4:
Attach pieces G and I to pieces C and D.



STEP 5:
Attach piece F to pieces A and C. Repeat with the second piece F to pieces B and D.



STEP 6:
Attach the tabs on piece H onto the front of piece G. Then fold piece H over piece G to create a counter. Fold in the wings on piece H and slot into piece G to secure the counter.



Your Ticket Booth is finished!

Enjoy your new Ticket Booth! Use it as a display piece or as part of a larger scene.

WARNING!!!
THE TICKET BOOTH NOT CAPABLE OF SUSTAINING HEAVY WEIGHTS.

