

Video Tips

<https://youtu.be/hjQmcXo-Ing>

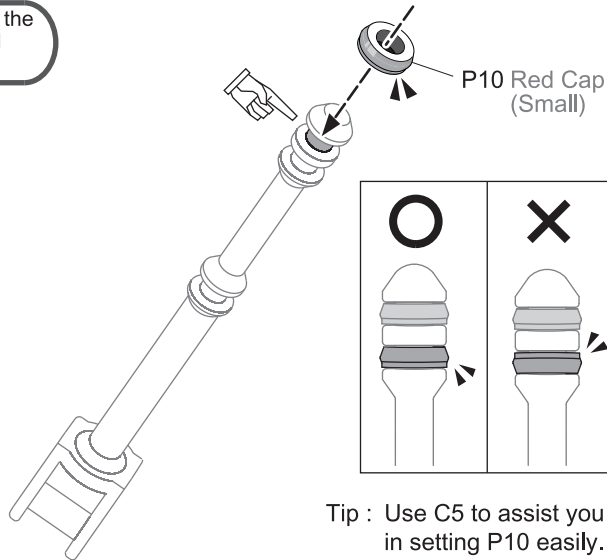
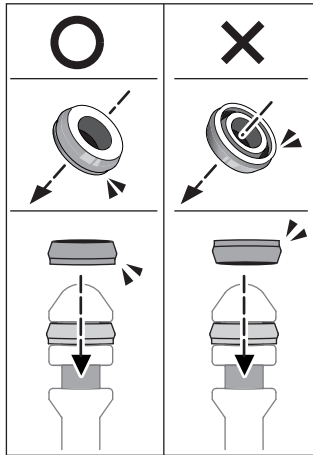


Scanning the QR code to help you assemble below steps smoothly.

Make Sure P10 Set To B13 Step By Step As Shown Below.

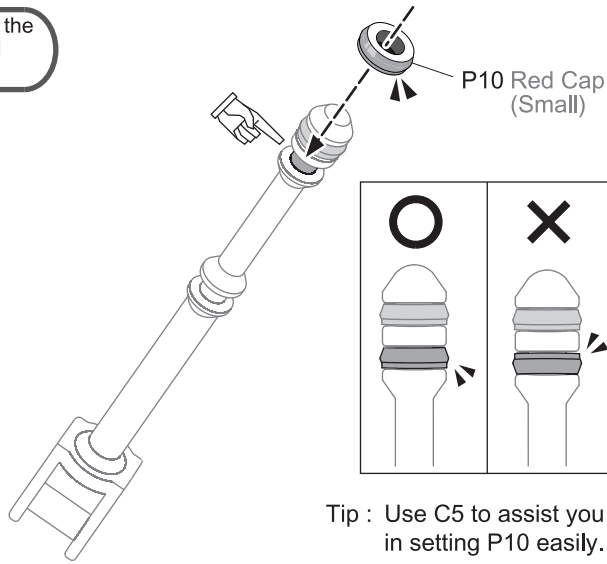
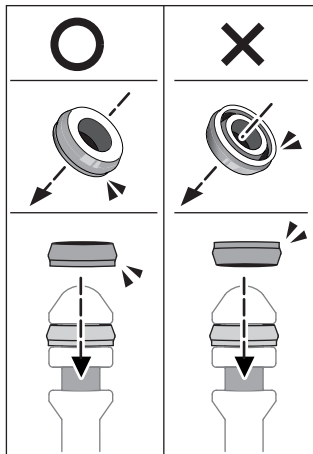
11

! Ensure P10 is inserted in the proper direction to avoid air leakage.



12

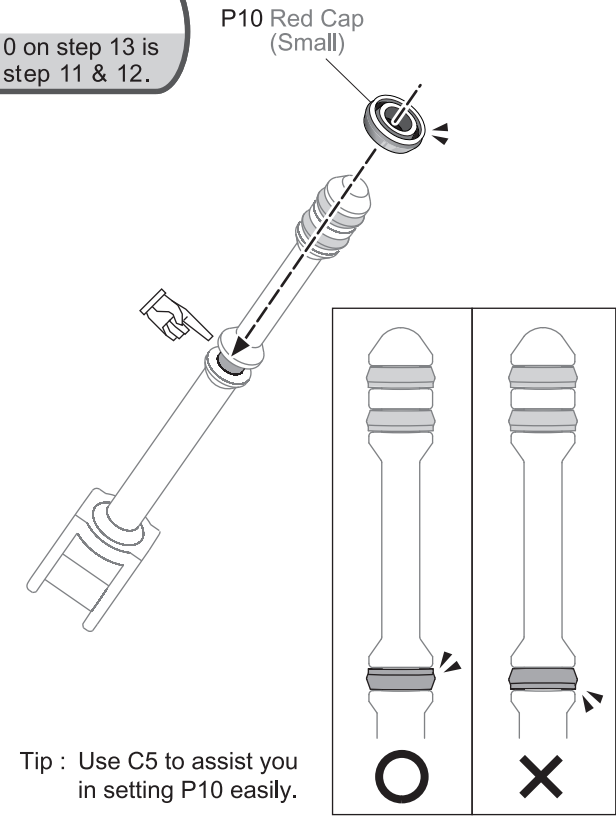
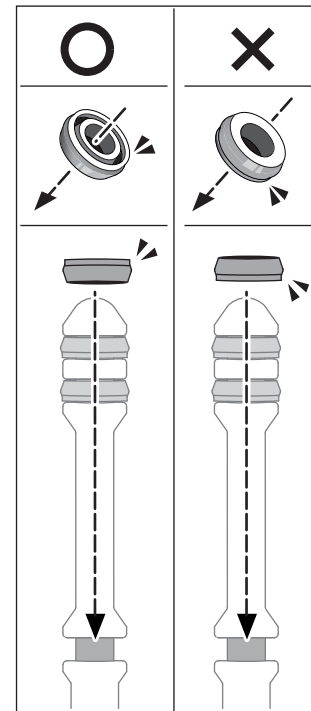
! Ensure P10 is inserted in the proper direction to avoid air leakage.



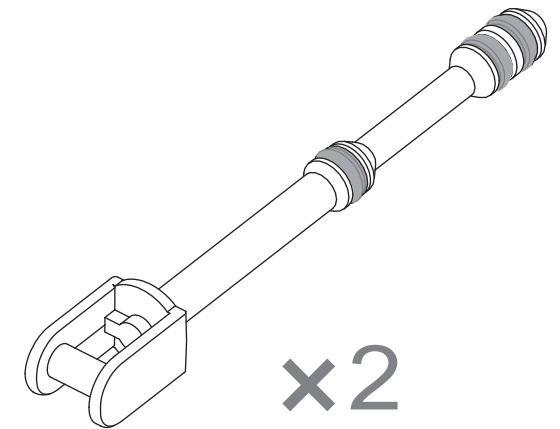
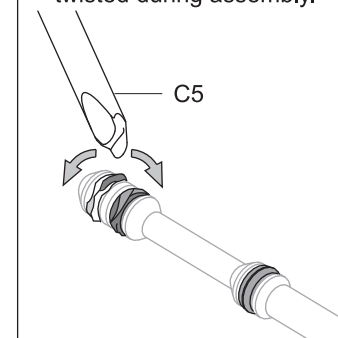
13

! Ensure the direction of P10 to avoid air leakage.

Note: Direction of P10 on step 13 is different from step 11 & 12.



Tip :
Use C5 to make it smooth if P10 was twisted during assembly.



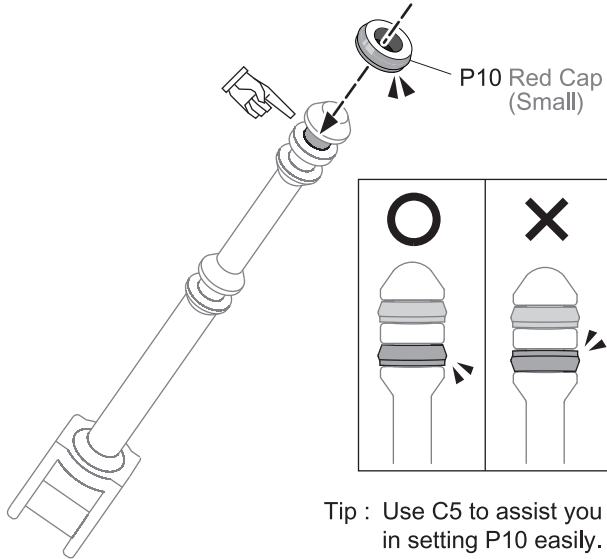
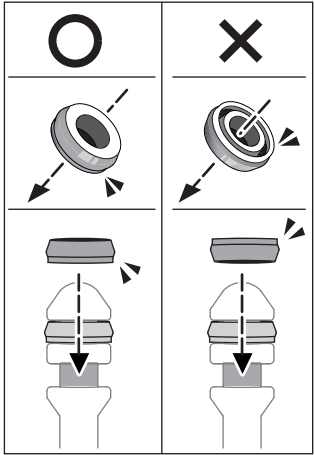
! Make Sure P10 Set To B13 Step By Step As Shown Below.

11

! Ensure P10 is inserted in the proper direction to avoid air leakage.

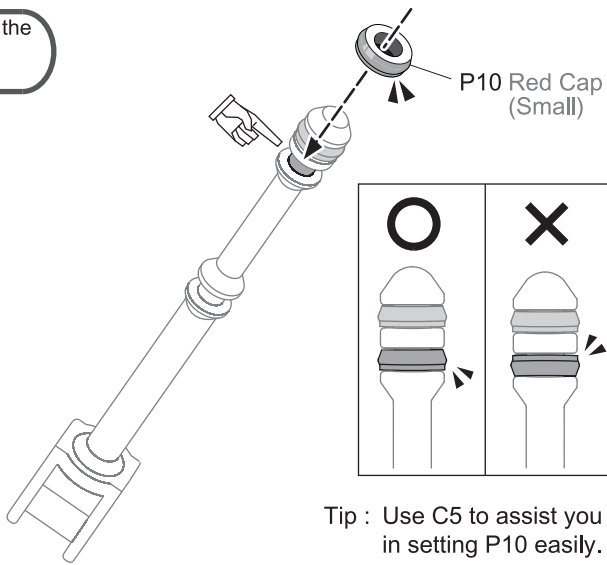
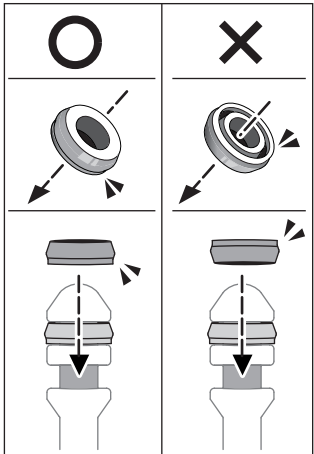
Video Tips

<https://youtu.be/hjQmcXo-Ing>



12

! Ensure P10 is inserted in the proper direction to avoid air leakage.



13



Ensure the direction of P10 to avoid air leakage.
Note: Direction of P10 on step 13 is different from step 11 & 12.

